

TealGlance User's Manual



Program Version 3.52
Last Updated: May 10, 2005

Table of Contents

Introduction	1
Contents	1
Installing	2
Chapter 1 – Using the Program	3
Overview	3
Activation	3
Chapter 2 – TealGlance Settings	5
Datebook Options	7
ToDo Options	7
Advanced Options	9
Brainforest Options	10
Appendix A – Troubleshooting	12
Installing and Running	12
Other questions	12
Appendix B – Compatibility	14
Appendix C – Revision History	16
Appendix D – Credits	17
Appendix E – Contact Info	17
Appendix F – Products	17
Appendix G – Registering	19
Appendix H – Legal Notice	20

Introduction

Thank you for trying *TealGlance*. This application gives pops up a 'quick view' window at power-up showing commonly-needed information such as:

- Day of Week
- Date
- Time (Digital)
- Time (Analog)
- Battery Level Indicator
- Upcoming Datebook appointments
- Unchecked Top ToDo list items

TealGlance is fully configurable, providing options for adjusting delay time, ToDo category, display mode, and Time and Date format, and optional automatic backlight activation.

Contents

This archive contains the following files:

Program files:

TEALGLNC.PRC	The TealGlance program file
CALLGLNC.PRC	The <i>CallGlance</i> activating application, appears as 'Teal Glance' in the Applications screen
TEALMSTR.PRC	<i>TealMaster</i> System Extensions Manager (demo)
SETUP.EXE	Easy installer program (Windows only)

Document files:

GLNCDOC.PDF	This document in Adobe Acrobat (PDF) format
GLNCDOC.HTM	This document in HTML format (sans images)
GLNCDOC.PRC	This document in TealDoc format
REGISTER.HTM	TealPoint Registration form in HTML format
REGISTER.TXT	TealPoint Registration form in text format

Installing



TealGlance uses the Hackmaster-compatible Palm System Extensions standard. This is a safe and standard way to add and manage extended system functionality on the PalmPilot. We've included the non-expiring trial version of our own extensions manager TealMaster, but you may use Hackmaster (shareware) or X-Master (freeware) as well. **NOTE: Under PalmOS 5 and higher, you MUST use TealMaster, as other extensions managers are not compatible with the new operating system or Arm-based handhelds.**

Use the PalmPilot installer to install the program file *TEALGLNC.PRC*, *CALLGLNC.PRC*, and *TEALMSTR.PRC*, if you do not already have it or another system extensions manager. on your machine. The PalmPilot installer can be found as an icon on the left hand side of the Palm Desktop program. Instructions on how to use the PalmPilot installer are in the PalmPilot Handbook that came with your Pilot, PalmPilot, or WorkPad.

On a Windows PC: you can also alternatively use quick setup installer by double clicking on the **SETUP.EXE** installer program, and following the on screen prompts.

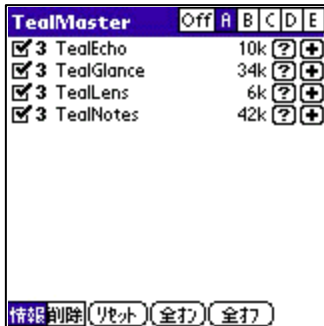
Important note

Before updating or deleting any system extension like TealGlance, be sure to disable the application first in the TealMaster/Hackmaster control screen. If you fail to do so, your TealGlance will not operate, and Hackmaster will get confused until you disable and re-enable TealGlance a few times.

Chapter 1 – Using the Program

Overview

TealGlance comes in two components. The main part is a system extension, which is activated from within TealMaster. This component can be configured within TealMaster to pop up the TealGlance display window on power up or with a **double command stroke** (see below). To turn on TealGlance, simply click on the TealMaster icon in the applications launcher, and click on the checkmark next to the TealGlance entry in the Hacks list.



The second component, CallGlance, will appear on your applications screen as a standard program labeled 'Teal Glance' (with space). CallGlance provides an alternate way to activate TealGlance, keeping its display up indefinitely until you start another application. This makes it suitable for staying on in the cradle as a constant time/task display. CallGlance requires the main TealGlance component to be installed and activated to function.

Once TealGlance is activated, you will be able to configure it to quickly and neatly display the information that fits your individual needs.

Activation

By default, *TealGlance* is automatically activated when you turn on your Pilot using the green power button. The information window will pop up and disappear after a configurable time limit. To make the window disappear sooner, just click anywhere with the pen or press one of the buttons on the Pilot, such as the up and down scroll buttons. If you hold down the pen, TealGlance will stay on screen until you release it.



As an alternate way to bring up TealGlance, use the CallGlance program (appears as *Teal Glance* in the App launcher). The display will come up and stay on screen, updating itself every 30 seconds until another application is selected.

To configure TealGlance, activate TealMaster and click on the plus (+) button next to TealGlance. Here, you can adjust the format of the pop-up window, set the time it stays on screen, and adjust many other options. Note that on a color Palm, the current version of Hackmaster does not display the (+) button correctly.

Additionally you may enter a keyword you receive when you register the product to remove the 'Please Register' text in the popup window. When you enter the password, the entry line in the config screen will still remain as it is, but you should not longer get the *Please Register* messages.

Datebook events appear in chronological order by start time, and are included up to an hour after start time (in case you're running late), or until the stop time has passed, whichever is latest. Tomorrow's events are shown, if selected and there is room, after today's event separated by a horizontal line and enclosed in brackets.

Unchecked ToDo items in the selected category are shown sorted by priority. If you are using the Alt-ToDo feature, the current category can change depending on the time and day of the week. See options below for more info.

You may click on an entry to go to either the ToDo application or the Datebook application. This feature requires that your hardware buttons have the default mappings to the standard ToDo and Datebook apps. You will go to the correct day if clicking on a datebook item, but when going to the ToDo list application, the current category may not reflect the item you chose. You may also click on a checkmark box on the TealGlance screen to check-off a listed ToDo item, provided you are not activating TealGlance from within the ToDo application.

Chapter 2 – Settings



Adjust settings by running TealMaster and clicking on the '+' key next to the *TealGlance* listing.

The following options may be changed within this config screen.

List Items

Sets what to show in display area below time and date. Choices are Upcoming Datebook Appointments, ToDo items, None, or Both.

Activate By

Selects combinations of alternate ways to bring up TealGlance.

Power button:

When PalmPilot is turned on with the green power button

Application buttons:

Power up using the 4 application buttons on the pilot

Double-command stroke:

Doing the command graffiti stroke (a slash from lower left to upper right) twice in succession.

Delay Time

Time Popup window stays up before automatically closing

Time Format

Format in which time appears

Date Format

Format in which date appears

Clock type

Choose Analog, Digital, Compact, or None (new for version 2.60)

Backlight Display

Allows automatic activation of backlight (if available) at power-up either all the time or only between dusk and dawn.

Dawn

Set dawn time (for backlight option above).

Dusk

Set dusk time (for backlight option above).

Enable when Locked

Set whether TealGlance is activated even if Pilot is locked.

Disable if off less than xxx mins

Doesn't come up if PDA is turned off less than a specified number of minutes

Disable after on for xxx mins

Set a minimum time between pop-ups, regardless of the Pilot's on/off state. After it's already been popped up, TealGlance won't come up at power-up again unless the specified number of minutes has passed.

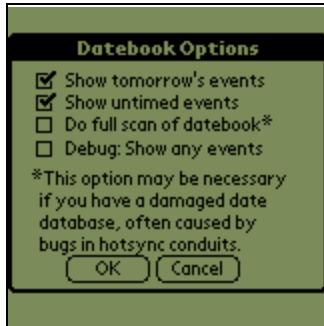
Power Off after timeout

Turns off Pilot if TealGlance is activated at power-up and is allowed to time out without a key or pen press.

Bold Font

Use a bold font for appointment and ToDo item display

Datebook Options



The following options may be changed by pressing the '*Date Options*' button on the config screen.

Show Tomorrow's events

With this option on, tomorrow's datebook items are shown below today's remaining ones, with a line separating the two.

Show Untimed events

With this option on, untimed events are shown in TealGlance.

Do full scan of datebook

By default, TealGlance assumes the datebook is sorted by date. The standard Palm applications guarantees this to be true. Unfortunately, many third-party conduits and hotsync replacement programs have bugs with scramble the Datebook, causing entries not to appear in TealGlance. Choosing this option forces TealGlance to look through the whole datebook each time, so it will find items even in a corrupt datebook database.

ToDo Options



The following options may be changed by pressing the '*To Do Options*' button on the config screen.

Show when due

Allows filtering of which ToDo items to show by Due Date Choices Are:

Show All

Show ToDo items ignoring Due Date

Due Today

Only show items due Today or earlier

Due Sometime

Only show items with some due date set

Today or Unset

Only show items due Today or without a due date set

Primary Categories

Sets the default categories of ToDo items to be shown. Up to two categories can be selected. If only one is needed, set them to be the same.

NOTE: Palm OS 2.0 (PalmPilot Personal and Professional) filters out empty ToDo categories from appearing in the settings menu. Because of this you will not be able to select a Category if it is empty. If this happens, just create a temporary ToDo entry to make the category appear.

Alt Categories

Sets the alternate categories of ToDo items to be shown during non-primary hours (by default 9am-6pm Monday through Friday).

Primary Beg Time

Sets start time for when the Primary ToDo category becomes valid.

Primary End Time

Sets end time for when the Primary ToDo category becomes invalid.

Primary ToDo Days

Selects days for which the Primary ToDo category is valid.

Advanced Options



The following options may be changed by pressing the 'Advanced' button on the config screen.

Simulated Buttons for Goto

Simulates a press of one of the app buttons for app-goto instead of directly calling the system applications. You can use this option if you're using a ToDo or datebook replacement and want to go to it instead of the standard system app. If the app you want to call is 100% compatible with the standard app, you can use the *Alt Date App* and *Alt ToDo App* options below.

Pass-thru button presses

Normally, if you press a button when TealGlance's screen is up, it dismisses TealGlance, but doesn't perform its normal function afterwards. This allows you to, say, press the Power button twice when turning on the PalmPilot to immediately dismiss TealGlance. When this option is set, the key instead performs its normal function after TealGlance goes away.

Ignore pager activation

If selected, this option forces TealGlance to check if the PDA were woken up by pager hardware. If true, TealGlance will not come up. If you do not have Pager hardware or a Palm VII, you should leave this unchecked, as it makes some assumptions about the hardware you are running to make its check.

Disable button power-on

This feature allows you to prevent accidental power-on, particularly on a Palm V, by automatically turning off the Pilot if turned on via a specified key.

Scan for alternate files

Some desktop synchronizing programs create datebook files with different names than the standard 'DatebookDB' database. Set this option to tell TealGlance to scan for these databases as well, especially if you are finding that datebook entries are not being shown.

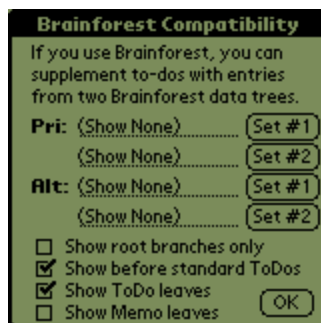
Alt Date App

Select and set this option to choose a Datebook replacement app to call when you click on a datebook item. Note that the replacement application must be 100% compatible with standard app's record-goto mechanism to work properly.

Alt ToDo App

Select and set this option to choose a To-Do List replacement app to call when you click on a ToDo item. Note that the replacement application must be 100% compatible with standard app's record-goto mechanism to work properly.

Brainforest Options



TealGlance offers support for using Aportis Brainforest trees as sources for ToDo items. You can select up to two Brainforest trees to be scanned at any one time. Two can be set to supplement the Primary ToDo Categories and another two can be set to supplement the Alternate ToDo Categories. The entries are treated as standard ToDo entries, ignoring repeating and start dates.

Note that clicking on a Brainforest item will start Brainforest, but won't automatically take you directly to that item or tree due to differences between the standard applications' record-goto mechanism and Brainforest.

The following options may be changed by pressing the 'Brainforest' button on the config screen.

Primary Trees #1 and #2

These are the two trees that can be used as sources for ToDo items during Primary ToDo hours.

Alternate Trees #1 and #2

These are the two trees that can be used as sources for ToDo items during Non-Primary ToDo hours.

Show root branches only

By default, TealGlance scans down a Brainforest tree from top down, reading all leaves of the tree. If you set this option, only items from the topmost level (Leftmost in

Brainforest) get displayed.

Show before standard

If set Brainforest entries appear before standard ToDos instead of after them.

Show Memo leaves

Shows memo-type leaves in TealGlance. They appear in the ToDo list with a rectangular document icon instead of a checkbox.

Show ToDo leaves

Shows ToDo-type leaves in TealGlance. They appear the same as ToDo list items from the standard ToDoList application. If neither this nor the previous option is set, no Brainforest items will appear.

Appendix A – Troubleshooting

Installing and Running

If you are having problems getting the program to run, be sure that you have installed all three files: TealMaster, TealGlance, and CallGlance. Refer to the PalmPilot manual that came with your unit if you are unsure how to do this.

Afterwards, be sure to activate *TealGlance* by running *TealMaster* and selecting the checkmark next to *TealGlance*. If it still does not work, try un-selecting and re-selecting the checkmark. If *TealMaster* has gotten confused because you either updated or deleted *TealGlance* without first deselecting it in *TealMaster*, the Palm will likely crash, but with no lingering side effects afterwards.

Lastly, check the *TealGlance* options in *TealMaster* ('+' key) to insure it is set up to activate by your desired choices.

Other questions

It doesn't work properly with Fitaly Keyboard

Make sure TealGlance appears above Fitaly Keyboard in Hackmaster's list of hacks or if in TealMaster, TealGlance is given higher (lower number) priority. Do this by deactivating and reactivating TealGlance. Also make sure you have the latest TealGlance.

It doesn't work properly with DateBk3 alarms

Make sure you are running version 3.0 or newer of Datebk3. This new version reportedly reduces stack usage, making it much more compatible with hacks like TealGlance.

I deleted it and it still comes up

As noted in the documentation, before deleting TealGlance or any system extension, you must first turn off the program in TealMaster. If you forgot, you'll need to restart the PalmPilot using the pinhole in the back.

TealGlance still doesn't come up at power-on

Are you running PowerHack? Make sure TealGlance appears first in the Hackmaster list by deactivating and reactivating it, or set TealGlance a higher priority if running TealMaster.

My datebook events aren't showing

TealGlance only shows *upcoming* events, not those that have expired, and will show as many as will fit, unless you have TealGlance setup to show To-Do items as well. If this is the case, it will stop at half screen. When you register, the space behind the 'Please Register' box will also become available.

I checked. They still aren't showing

If you are running Groupwise/Syncwise (or similar sync/datebook replacement), this program appears to have a bug that mis-sorts the datebook database, rendering some items invisible. To check, download *dbScan* from <http://www.gorilla-haven.org/pimlico>, which can be used to check the datebook database's integrity. TealGlance 2.62 added a feature that assumes a damaged database and does a full scan of the database each time. TealGlance 2.83 added a feature to skip over damaged records in the database instead of aborting when it encounters one.

I'm running Easysync. Is that a problem?

It appears to be. The Easysync package seems to rename the datebook database so TealGlance can't find it. Try setting the "scan for alternate files" options in the advanced options screen.

Can TealGlance's screen scroll?

Not yet, as it was intended to just preview the next thing coming up. We may add this in a future version.

I hot-synced a new version and it crashed

As noted in the documentation, before hot-syncing a new version, you must turn off the program in Hackmaster/TealMaster.

Help. TealGlance locks up.

Check to see what other applications are running. There are known incompatibilities with CheckIn and GlowHack. You should no longer need GlowHack, as TealGlance has options to provide GlowHack functionality. We are currently also looking into possible interactions with SnoozeHack and 'memoplus' alarms.

Can TealGlance show Franklin Ascend to-do items?

Not currently, as Franklin's data format is not public knowledge. We are currently exploring this possibility. The Franklin folks have contacted us, but have yet to prepare and send us a data specification so we can continue.

It crashes when I press the Register button. I am using EVPlugBase.

This is a bug in the Hackmaster replacement EVPlugBase. We recommend using Hackmaster or TealMaster instead until the EVPlugBase is fixed to accurately mirror Hackmaster's behavior.

TealGlance doesn't work with the Palm V button hack.

Use the power-up button disabling features in the Advanced config screen of TealGlance 2.80 or greater. These allow you to automatically turn off the Palm if it is accidentally turned on by one or more specified keys.

Appendix B – Compatibility

As we cannot control the style and robustness of other products, we cannot guarantee compatibility with PalmPilot applications beyond those included from Palm Computing. However, we try to resolve compatibility issues as best we can, working with other developers where possible.

TealGlance, like all system extensions, hook into the PalmPilot operating system in a way which may not be compatible with all other programs of this type, as all such programs must share limited system resources. If you experience unexpected behavior or crashes, always try disabling all other hacks to diagnose whether what you experience is the result of a conflict.

Palm V Button Hack

Use the *TealGlance* "disable power-on" features under the advanced menu instead to access some of the same functions.

EVPlugBase

The Pilot reportedly crashes upon pressing the 'Register' button when using this Hackmaster replacement. We recommend using Hackmaster or TealMaster instead until *EVPlugBase* is upgraded to fix this bug.

ReDo

ReDo wakes up your Pilot at midnight to reschedule events. The new version of *TealGlance* ignores alarms at midnight to avoid coming up at this time. Set ReDo's wake time to midnight to best avoid a conflict.

Fitaly Keyboard

Fitaly Keyboard does some intense hacking of the Operating System to do its stuff. Be sure *TealGlance* appears *above* Check-In in the list of hacks in HackMaster. When you deactivate (uncheck) and reactivate (check) a hack in the list, it's moved to the top of the list. In *TealMaster*, set *TealGlance* to a higher priority.

GlowHack

Known to crash when *TealGlance* is active.
Use *TealGlance's* backlight-activation option instead

PowerHack

Make sure you have an updated version of *PowerHack*. Version 0.95 reportedly fixes a previous conflict with *TealGlance*.

Franklin Ascend

No compatibility problems, but we're currently accessing the demand and viability of adding an option to list Ascend ToDo items instead of the standard PalmPilot ToDo application as a service to your customers who use Ascend.

Brainforest

Compatibility options have been added with *TealGlance* 3.0. Note that clicking on a Brainforest item won't take you directly to that item, however, due to differences

between the standard applications' record-goto mechanism and Brainforest.

Check-In

Check-In seems to have some compatibility problems with TealGlance. When using Check-In, be sure TealGlance appears below Check-In in the list of hacks in Hackmaster. When you deactivate (uncheck) and reactivate (check) a hack in the list, it's moved to the top of the list. In TealMaster, set TealGlance's priority higher. Better yet, use TealLock instead of Check-In.

Datebk3

Make sure you have Datebk3 version 3.0 or newer, which greatly decreases stack uses for compatibility.

Syncwise

We believe this hot-sync application can corrupt the datebook database and do not recommend it for this reason. If you find datebook items are not appearing when they should, try selecting the "Do full scan of datebook" option under the details menu. If this works, download the freely downloadable program dbScan to check/fix corrupted datebook records.

Appendix C – Revision History

Version 3.52 – May 10, 2005

- Updated registration screen to auto-select text entry field on Tungsten T5/Treo 650
- Updated bundled TealMaster demo to NVFS-compatible version

Version 3.51 – January 17, 2005

- Added support for full screen resolutions under OS5 devices
- Updated to support power button activation option on devices with delayed screen powerup (like Tungsten C)
- Fixed limit to delay times longer than 5 seconds on newer faster devices

Version 3.41 - April 15, 2003

- Updated to support Tungsten T voice and select buttons for dismissing popup

Updates to Version 3.40 – October 4, 2002

- Fixed compatibility with PalmOS 5 and ARM-based handhelds (requires TealMaster 2.0)

Updates to Version 3.30 – March 8, 2001

- Fixed crash going to Todo Options screen under 3.5.2

Updates to Version 3.28 – August 17, 2000

- Added Color Icons for Palm IIIc
- Added Color display elements for Palm IIIc
- Fixed “Scan for alternate files” preferences item, which had previously had no effect

Updates to Version 3.27:

- Added advanced option to scan for alternate datebook files (was default behavior)
- Made todo list code smart to eliminate duplicate entries when one category is set to 'all'
- Reduced stack usage for better stability during alarms
- Added a little color support
- Fixed command stroke activation under PalmOS 3.5
- Fixed registration crash

Updates to Version 3.23B:

- Fixed activation from TealScript

Updates to Version 3.23:

- Changing spacing character to not conflict with euro sign in os 3.1

Updates to Version 3.22:

- Added full-screen display for cleaner look and more display space.
- Added small list icon to TealGlance calling application
- Fixed bug detecting pen tap positions
- Fixed recognition of Hotsync button under OS 3.1 (Button should be pressed and held momentarily)
- Fixed display of brackets for tomorrow's events
- Changed to scan for any Datebook databases including SyncWise ones
- Added support code for future OS compatibility

Appendix D – Credits

Manual by Vince Lee, Tex Tennison, and Diane Dybalski

Appendix E – Contact Info

TealGlance by TealPoint Software
©1999-2005 All Rights Reserved.

TealPoint Software
454 Las Gallinas Ave #318
San Rafael, CA 94903-3618
We look forward to hearing from you.

Please visit us at www.tealpoint.com, or email us at contact@tealpoint.com.

Appendix F – Products

Visit us online for our complete product line, including:

TEALAGENT (<http://www.tealpoint.com/softagnt.htm>)

Get news, movie times, stock quotes, driving directions, web pages and more without need for a wireless connection. TealAgent fetches and formats web-based content for offline viewing.

TEALALIAS (<http://www.tealpoint.com/softalia.htm>)

Free up memory and make the most of external expansion cards. Placeholder 'Alias' shortcut files automatically find, load, and launch apps and data from external SD cards, increasing free main memory.

TEALAUTO (<http://www.tealpoint.com/softauto.htm>)

Track and graph automobile mileage, service, and expenses with TealAuto, the complete log book for your car or any vehicle. Extensive customization options and unmatched in features and functionality.

TEALBACKUP (<http://www.tealpoint.com/softback.htm>)

Backup your valuable data with TealBackup, supporting manual and automatic backups to SD/MMC/CF cards and Memory Stick, backups through HotSync, and optional compression and encryption.

TEALDOC (<http://www.tealpoint.com/softdoc.htm>)

Read, edit, and browse documents, Doc files, eBooks and text files with TealDoc, the enhanced doc reader. Extensive display and customization options; TealDoc is unmatched in features and usability.

TEALECHO (<http://www.tealpoint.com/softecho.htm>)

Improve your Graffiti text input speed and accuracy, seeing what you write with TealEcho digital "ink". No more writing blind!

TEALGLANCE (<http://www.tealpoint.com/softglnc.htm>)

See the time, date, upcoming appointments and todo items at power-up with TealGlance. The TealGlance pop-up utility comes up when you power up your handheld letting you see your day "at a glance."

TEALINFO (<http://www.tealpoint.com/softinfo.htm>)

Lookup postal rates, area codes, tip tables, schedules, airports, and info from hundreds of free TealInfo databases. Create your own mini-apps; a handheld reference library.

TEALLAUNCH (<http://www.tealpoint.com/softlnch.htm>)

Launch applications instantly with the TealLaunch pop-up launcher and button/stroke-mapping utility. Map applications to button presses and pen swipes so you can get to your apps quickly.

TEALLOCK (<http://www.tealpoint.com/softlock.htm>)

Secure and protect your handheld with TealLock, the automatic locking program with encryption and card support. TealLock has unmatched features and customization options for personal or corporate use.

TEALMAGNIFY (<http://www.tealpoint.com/softlens.htm>)

Save your eyesight with TealMagnify, an ever-ready magnifying glass that works with most any program. TealMagnify lets you enlarge the screen for those times the text is too small to read.

TEALMASTER (<http://www.tealpoint.com/softmstr.htm>)

Replace Hackmaster with TealMaster, the supercharged 100%-compatible system extensions manager. TealMaster adds enhanced stability, configuration and diagnostic features and PalmOS 5.0 hack emulation.

TEALMEAL (<http://www.tealpoint.com/softmeal.htm>)

Save and recall your favorite restaurants with TealMeal, the personal restaurant database. With TealMeal's handy sorting and selection options, never ask "where to eat" again.

TEALMEMBRAIN (<http://www.tealpoint.com/softmemb.htm>)

Stop crashes and monitor your memory use with TealMemBrain, the application stack stabilizer. TealMemBrain boosts your stack space on OS3 and OS4 handhelds, eliminating the major cause of system instability.

TEALMOVER (<http://www.tealpoint.com/softmovr.htm>)

Beam, delete, rename, and copy files with TealMover, the file management utility for SD/CF/MS cards. TealMover lets you see, move, modify, hex edit, and delete individual files.

TEALMOVIE (<http://www.tealpoint.com/softmovi.htm>)

Play and convert high-quality video and synchronized sound with the TealMovie multimedia system. TealMovie includes a handheld audio/movie player and a Windows AVI/Quicktime converter program.

TEALNOTES (<http://www.tealpoint.com/softnote.htm>)

Insert freehand graphics anywhere with TealNotes "sticky notes" for Palm OS. TealNotes can be inserted into memos, to-do lists, address book entries--almost anywhere you currently have editable text.

TEALPAINT (<http://www.tealpoint.com/softpnt.htm>)

Paint, sketch, or draw with TealPaint, the all-in-one graphics paint program for PalmOS. Highlights include 20 tools, 16 patterns, 24 brushes, zoom, hires, layers, multi-undo, and a desktop converter.

TEALPHONE (<http://www.tealpoint.com/softphon.htm>)

Supercharge the address book with TealPhone, the contacts replacement with superior interface and options. Highlights include enhanced display, search, phone-dialing, groups, and linking.

TEALPRINT (<http://www.tealpoint.com/softprnt.htm>)

Print text and graphics to IR, serial, and Windows printers with TealPrint. With numerous connection options, TealPrint, is the all-in-one text and graphic printing solution.

TEALSAFE (<http://www.tealpoint.com/softsafe.htm>)

Store your passwords, credit cards, PIN numbers, and bank accounts in the TealSafe data wallet. With maximum security and encryption, TealSafe is a must for features and security.

TEALSCRIPT (<http://www.tealpoint.com/softscrp.htm>)

Replace Graffiti 1 or Graffiti 2 with TealScript, the text recognition system you can customize. Unlike other systems, you can make or change your own strokes for better speed and accuracy.

TEALTOOLS (<http://www.tealpoint.com/softtool.htm>)

Improve productivity with TealTools pop-up Palm Desk Accessories. TealTools includes a popup calculator, clock/stopwatch, preferences panel, editing panel, memopad, and a file/backup manager.

SHORTCIRCUIT (<http://www.tealpoint.com/softshrt.htm>)

A new twist on gameplay fused from your all time action puzzle favorites, connect falling conduit pieces into explosive loops in this frantic race against the clock.

Appendix G – Registering

Registering allows you to use the program past the 30 day expiration period and turns off registration reminders.

Currently, you may register by snail mail or online with a credit card and a secured server from the store where you downloaded the software. For the first option, send the following information on a sheet of paper separate from your payment.

- Product Name
- E-Mail Address
- HotSync User ID (Pilot Name Required for Passkey generation. It can be found on the main screen of the HotSync application on the Pilot as "Welcome _____" or in the corner on a PalmIII or higher)
- Check (drawn off a US Bank) or Money Order for (\$14.95 US). No international checks or money orders please.

Registration of your system extensions manager (such as TealMaster or Hackmaster) is not included, and must be purchased separately. TealMaster retails for \$9.95.

Appendix H – Legal Notice

We at TealPoint Software are committed to providing quality, easy-to-use software. However, this product is provided without warranty and the user accepts full responsibility for any damages, consequential or otherwise, resulting from its use.

This archive is freely redistributable, provided it is made available only in its complete, unmodified form with no additional files and for noncommercial purposes only. Any other use must have prior written authorization from TealPoint Software.

Unauthorized commercial use includes, but is not limited to:

- A product for sale.
- Accompanying a product for sale.
- Accompanying a magazine, book or other publication for sale.
- Distribution with "Media", "Copying" or other incidental costs.
- Available for download with access or download fees.

This program may be used on a trial basis for 30 days. The program will continue to function afterwards. However, if after this time you wish to continue using it, please register with us for the nominal fee listed in the program.

Thank you.

CUSTOMER LICENSE AGREEMENT

YOU ARE ABOUT TO DOWNLOAD, INSTALL, OPEN OR USE PROPRIETARY SOFTWARE OWNED BY TEALPOINT SOFTWARE, INC. CAREFULLY READ THE TERMS AND CONDITIONS OF THIS END USER LICENSE BEFORE DOING SO, AND CLICK BELOW THAT YOU ACCEPT THESE TERMS.

1. License. You are authorized to use the Software Product owned and developed by TealPoint Software, Inc. on a single hand-held computing device on a trial basis for thirty (30) days. If after 30 days you wish to continue using it, you are required to register with TealPoint and pay the specified fee. This license is not exclusive and may not be transferred. You may make one copy of the Software for back-up and archival purposes only.
2. Ownership. You acknowledge that the Software Product is the exclusive property of TealPoint Software, Inc, which owns all copyright, trade secret, patent and other proprietary rights in the Software Product.
3. Restrictions. You may NOT: (a) decompile or reverse engineer the Software Product; (b) copy (except as provided in 1 above) sell, distribute or commercially exploit the Software product; or (c) transfer, assign or sublicense this license.
4. Disclaimer of Warranty and Liability. TEALPOINT MAKES NO WARRANTY, EXPRESS OR IMPLIED, AS TO THE ACCURACY, COMPLETENESS OR FUNCTIONING OF THE LICENSED SOFTWARE, INCLUDING WITHOUT LIMITATION, WARRANTIES OF MERCHANTABILITY OR OF FITNESS FOR A PARTICULAR PURPOSE, ALL OF WHICH TEALPOINT DISCLAIMS. ALL LIABILITY IS DISCLAIMED AND TEALPOINT ASSUMES NO RESPONSIBILITY OR LIABILITY FOR LOSS OR DAMAGES OF ANY KIND, DIRECT OR INDIRECT, INCIDENTAL, CONSEQUENTIAL OR SPECIAL, ARISING OUT OF YOUR USE OF THE LICENSED SOFTWARE, EVEN IF ADVISED OF THE POSSIBILITY THEREOF.
5. Termination. You may terminate this Agreement at any time by destroying your copy(ies) of the Software Product. The Agreement will also terminate if you do not comply with any of its terms and conditions, at which time you are required to destroy your copy(ies) of the Software Product and cease all use.
6. Applicable Law. This Agreement is governed by the laws of the State of California.