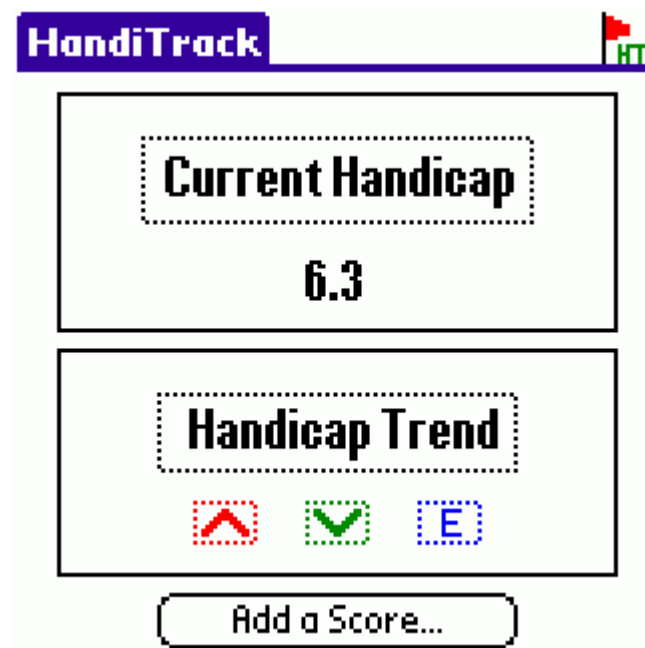


HandiTrack

Version 2.8

User's Manual



<http://handitrack.homestead.com>
handitrack@yahoo.com

HandiTrack is NOT endorsed by the USGA. The results obtained in using HandiTrack are purely for information only and are in no way to be construed as "official." Results from HandiTrack cannot be used in events requiring a handicap. The only way to obtain a true handicap is through a USGA-affiliated golf club.



Table Of Contents

1	Introduction.....	3
2	Installing HandiTrack	3
3	Upgrading From an Earlier Version of HandiTrack	4
3.1	If You Are Upgrading from Version 2.x of HandiTrack	5
3.2	If You Are Upgrading from Version 1.x of HandiTrack	5
3.2.1	Deleting Version 1.x of HandiTrack.....	6
4	The Basics	7
4.1	Limitations of the Trial Version of HandiTrack	7
4.2	Registering Your Copy of HandiTrack.....	7
4.3	What You'll See at First – The Main Screen	7
4.4	Handicap and Handicap Trend	8
4.5	Handicap Trend Details	8
4.6	Adding a Score	9
4.6.1	Entering a New Course, Tees, Rating and Slope	11
5	Additional Features	12
5.1	Averages	12
5.2	Handicap Details	13
5.3	Handicap History.....	13
5.4	Handicap Report	14
5.5	Personal Records.....	14
5.6	Score To Lower	15
5.7	Export Scores (To .CSV File)	15
5.8	Edit Menu And Edit Course/Tee Combos	16
5.9	Configure Options	17
5.10	Appearance Preferences	17
5.11	Stats and Reports Range	18
5.12	Diagnostics.....	18
5.13	Force Recalculation.....	18
6	Tips and Tricks	19
6.1	Dotted Lines Around Data or Text.....	19
6.2	What if? How Will Different Scores Affect My Handicap?	19
6.3	Notes for International Users – Number Formats	19
6.4	Let Us Know What You Think	20



1 Introduction

Welcome to HandiTrack, your handheld golf handicap tracker. Many people have heard of a golf "handicap" but don't know how to calculate one. Other people simply can't wait for infrequent updates on their handicap and want to know right after a round how their handicap has been affected.

HandiTrack is the answer. HandiTrack also provides some nice statistics to track your progress with your golf game.

Keep in mind that HandiTrack is not approved by the USGA or any other such organization. Results from HandiTrack are for information only and should in no way be construed as official. The only handicap allowable for use in tournaments is the one issued by your club or other official organization.

This manual will walk you through the basics to get you going, and then introduce some of the advanced features and tips that you'll find useful when using HandiTrack.

We think you'll enjoy staying on top of your game with HandiTrack. Hit 'em straight!

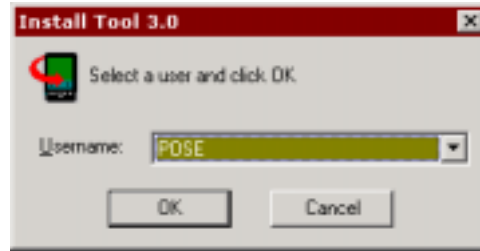
2 Installing HandiTrack

HandiTrack can be installed from a Windows-based PC or Macintosh computer onto a Palm OS-based handheld computer. The pre-requisite is that you have the Palm Desktop software installed on your desktop computer.

- ❑ You can download HandiTrack from a number of web sites that offer software for Palm OS based handhelds. Also, you can download from:
 - <http://handitrack.homestead.com>
- ❑ Save the .zip file to your computer, remembering where you saved the file.
- ❑ Unzip the file, again remembering where you place the extracted files.
 - If you do not have an unzip utility, you can find a free trial at <http://www.winzip.com/>.
- ❑ A number of files will be extracted. Double-click on the file named "HandiTrack-V2.prc".



- ❑ This will launch the Palm Desktop Install Tool.
 - If the Palm Desktop Install Tool does not launch, you need to install the Palm Desktop software. Make sure to install the correct version for your type of handheld device. Handheld manufacturers typically offer the desktop software on a CD and for free download from their web site.
- ❑ Choose the username for the handheld onto which you want to install HandiTrack.
- ❑ Follow the prompts, choosing "Done".
- ❑ Perform a HotSync operation. This will install HandiTrack onto your handheld device.
- ❑ Look for HandiTrack in the "Unfiled" category on your device. Find this by tapping on the "Home" silk-screen icon, and then choosing "Unfiled" from the upper right corner of your handheld screen.



3 Upgrading From an Earlier Version of HandiTrack

Upgrades are free to registered users. Simply download a "trial" version and install the new version. Your registration information will stay intact.

If you see the following on your main screen...	...then you are using version...	... and you need to do the following to upgrade
Score To Lower	1.x	Install HandiTrack using the instructions in this document. Then follow the conversion and import steps described below in section 3.2. IMPORTANT: If you have purchased a Palm OS 5.0-based handheld (such as the Palm Tungsten), carry out the conversion and import ON YOUR OLD HANDHELD. Then HotSync all data onto the new handheld. For further details, please contact handitrack@yahoo.com .
Handicap Trend	2.x	You DO NOT need to carry out the conversion steps listed below. Simply follow the installation steps described in this document.



3.1 If You Are Upgrading from Version 2.x of HandiTrack

You need not carry out any special steps. Simply install and use the new version. You will be prompted to confirm that you did not have version 1.x of HandiTrack installed.

3.2 If You Are Upgrading from Version 1.x of HandiTrack

You will be prompted to walk through a conversion process if you are upgrading from version 1.x of HandiTrack. This process converts the data from the old version and then imports it into the newest version.



If for some reason you do not want to do the conversion or import at this time, you can choose "No." You will not be prompted again. You must then use menu choices to do the conversion and/or import. If you use the menu choices HandiTrack will issue warnings. You can ignore the warnings, but *be careful not to carry out the conversion or import process more than once*. Duplication of data and inaccurate results can occur if the conversion or the import is done more than once.

Versions of HandiTrack prior to version 2.0 did not track statistics on the number of fairways hit.

During a conversion from version 1.x of HandiTrack, HandiTrack will fill in a default value of 14 for the number of fairways for EVERY COURSE. This may be incorrect since some courses are configured such that they have more or less than the typical four par-3 holes.

After the conversion is done you can edit the number of fairways for a course by choosing the Edit menu option, then choosing "Edit Course/Tee Combos". This screen is explained later in this manual.



3.2.1 Deleting Version 1.x of HandiTrack

If you have successfully upgraded from version 1.x of HandiTrack you can delete some files to save space. Before deleting the files it is advisable to make sure the data from the prior version was converted correctly and that the new version is working well.

To delete version 1.x completely you can delete the following files from your handheld. If you do not see these files then you were not running version 1.x of HandiTrack and there is no need to delete files.

- ❑ NOTE: Deleting files is accomplished by going to the application launcher, or "home", on your handheld. Tap on the menu icon and choose the "App" option. Then choose "Delete". You will be presented with a list of files. Tap on each file listed below and choose "Delete...".

Files to Delete to Remove Version 1.x of HandiTrack

❑ H-Track	❑ SF-SE_SysHeap
❑ HT Convert	❑ SFE_Graphics
❑ Sat. Forms SE RDK 3.1	❑ SFE_PilotNm



4 The Basics

4.1 Limitations of the Trial Version of HandiTrack

The trial version of HandiTrack has no time limit. You are limited to adding only 7 scores. Upon entering 7 scores you will still be able to access all statistics and other features of HandiTrack. The "trial" version becomes the full version upon entry of a valid key; there is no need to re-install.

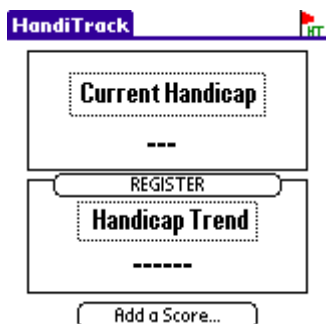
4.2 Registering Your Copy of HandiTrack

For information on how to obtain a registration key for HandiTrack, visit: <http://handitrack.homestead.com/>. Once you've purchased HandiTrack then you will receive registration information directly from the company where you've made the purchase. In any case, you can always contact HandiTrack with any questions at handitrack@yahoo.com.

To register once you've received your registration key:

- ❑ There is no need to re-install HandiTrack. The trial version becomes the exact same thing as the full version upon entry of a valid key.
- ❑ Open HandiTrack to the main screen.
- ❑ Tap the silk-screened menu button on your device.
 - On some handhelds you can tap directly on the title bar at the top of the screen.
- ❑ Tap on the "Help" menu option, and choose "Register".
- ❑ Enter the registration key you were provided, and then tap the "Register" button. You're off and running!

4.3 What You'll See at First – The Main Screen



When you first open HandiTrack you'll see a screen like the one to the left.

Once you start adding scores, the main screen will display your handicap and your handicap trend over the last three rounds.

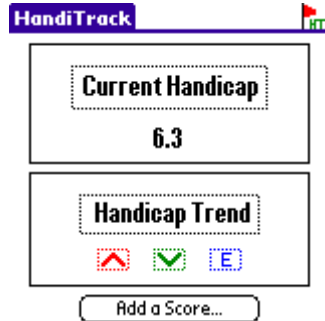
Initially the main screen will show a value of "---" for your handicap and for the handicap trend.

HandiTrack needs 5 or more scores to calculate your handicap and needs 8 or more scores to calculate your handicap trend.



4.4 Handicap and Handicap Trend

Once you've added the required number of scores the main screen will provide you with a snapshot of your handicap status.



The "Current Handicap" shows your current handicap taking into account all scores that you've added in HandiTrack.

The "Handicap Trend" shows the trend of your handicap over the most recent 3 rounds. The trend is shown with three symbols. The symbol on the left represents 3 rounds ago, the one in the middle two rounds ago, and the one on the right represents your most recent round. Each symbol indicates if the score you shot for that round lowered your handicap (down arrow), increased your handicap (up arrow), or whether your handicap was unchanged by the round ("E"). You want to see three down arrows, which would show that your handicap is trending down.

4.5 Handicap Trend Details

Tap on any of the handicap trend symbols on the main screen (up arrow, down arrow, or "E") to view the details for that particular round.



You will see a screen with all of the details for the round in question. The screen also shows specifics on what happened to your handicap as a result of the round in question.

Tap OK to return to the main screen.



4.6 Adding a Score

Tap on the "Add a score..." button on the main screen. You'll see a screen like the one below. HandiTrack will automatically fill in data for you as you fill in values for the course and other fields.

Following is an explanation of each field you see:

Add A Score

Date: 12/11/2002 ▼ Round Type

Course ▼ Choose Course

Rating 72.4 Slope 133

Score Putts

Fairways of 14 GIR

Differential Handicap

Now: 6.3 After: ---

Done Cancel

- Date: The date on which the round being added was played. The date is important in handicap calculations, so make sure it is correct if you are adding a number of rounds that were played in the past.
- Round Type: Indicates that you played away from your home course, or that the round was part of a tournament. Currently HandiTrack does not use these fields in its calculations,

but these fields can sometimes be useful.

- Course: Choose a course from the ones you've entered previously, or choose "-NEW-" to enter a new course.

Add A Score

Date: 12/11/2002 ▼ Round Type

Course ▼ Balata Hills

Tees ▼ Blue

Holes ▼ 18 Holes

Rating 72.4 Slope 133

Score Putts

Fairways of 14 GIR

Differential Handicap

Now: 6.3 After: ---

Done Cancel

- Tees: Choose the tees from which you played for this round. If you've previously played this course, this may be filled in automatically by HandiTrack
- Holes: Choose the number of holes that you played. Choose "-NEW-" if you need to enter a rating and slope for a set of holes not yet stored in HandiTrack.

- Front/Back: This field will only appear if you've chosen "9 Holes" as the number of holes. Specifies whether you're adding a score that you shot on the front 9 or back 9 holes of a course.
- Rating: The rating of the course for a particular set of tees. This will appear automatically, using the values you specified when you entered the course and tee data.
- Slope: The slope of the course for a particular set of tees. This will appear automatically, using the values you specified when you entered the course and tee data.
- Score: This is the score you shot for this round. After entering the score, when you tap on another field the differential and your new handicap will be calculated and displayed on the screen.



In the 1.x versions of HandiTrack the differential and the new handicap would be calculated after a few seconds, even if you did not tap on another field.

Newer versions require that you tap on another field to trigger the calculations.

- ❑ **Putts:** You can track the number of putts you made during this round. This can be a good measure of golf progress. If you don't track the number of putts you take, you can remove this field. (See the discussion of "Options" later in this manual.)
- ❑ **Fairways:** The number of fairways you hit in this round. The total number of fairways for the course will appear automatically, using the values you specified when you entered the course and tee data. If you don't track the number of fairways you hit, you can remove this field. (See the discussion of "Options" later in this manual.)
- ❑ **GIR:** This stands for Greens In Regulation. This is the number of greens you hit in regulation. (Regulation is the number of shots for par on a hole, minus two. So, for a par four, a green in regulation means you were on the green in two shots.) If you don't track the number of greens you hit in regulation, you can remove this field. (See the discussion of "Options" later in this manual.)

It might happen that you typically track a statistic, but for a given round you do not have the required information.

Simply leave the field blank on the add score screen. HandiTrack will prompt to make sure you want to skip the statistic for the one round. All of the statistics screens will take this into account.

- ❑ **Differential:** This is the handicap differential for the round you are adding. It represents how you shot that day, taking into account the difficulty of the course. This is filled in automatically.
- ❑ **Handicap Before/After:** This is your handicap before the round currently being added, and your handicap after the round being entered is added. This is filled in automatically.

It is possible to do "what if" analyses on your handicap using the "Add A Score" screen. See the "Tips and Tricks" section later in this manual for details.

4.6.1 Entering a New Course, Tees, Rating and Slope

When you choose "-NEW-" from one of the dropdown lists in the Add a Score screen, you'll see a screen like the one below. To enter a new course and tees, do the following:



- ❑ Tap on the triangle next to the word "Course" and choose "-NEW-" or choose an existing course. Choosing "NEW" will take you to a screen where you enter the name of the new course.
- ❑ Tap on the triangle next to the word "Tees". Either choose one of the tees listed, or choose "-NEW-" to enter the name of a new set of tees.
- ❑ Choose the number of holes for this course/tee combo. Choosing 9-holes will then enable you to choose whether this is for the front or back 9 holes.
 - If you've chosen to enter a 9-hole course/tee combo, you will be prompted as to whether you have a rating and slope specifically for this set of 9 holes. If not, you can input the 18 hole values and HandiTrack will calculate an approximation for the 9-hole value.
- ❑ Enter the rating and slope for the course AND THE PARTICULAR SET OF TEES that you've entered in this screen. Each set of tees for a course will typically have a different rating and slope, and thus will require a separate entry.
- ❑ Enter the number of fairways for this particular course/tee combo. Even if you are not currently tracking statistics for fairways hit, you might want to enter a value for future reference.
 - The number of fairways can be calculated by taking the number of holes overall (e.g. 18) and subtracting the number of par 3 holes (e.g. 4) on the course. While a typical course has 14 fairways, some have more and some have less.
- ❑ Tap the "Done" button, and you will be returned to the "Add a Score" screen, with the data you've just entered automatically filled into the appropriate fields.

Once you've entered a new course/tee combo the data is stored in the system. The next time you play the same course and tees the information will be filled in automatically.



5 Additional Features

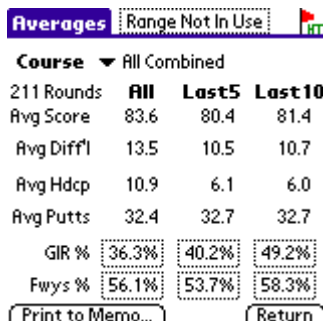


HandiTrack offers a number of useful features beyond the tracking of your handicap. You can access these features by tapping on the menu button on your handheld.

Your screen will look like the screenshot to the left. Tap on a menu choice to access the feature.

5.1 Averages

The averages screen shows you your averages for various statistics. The averages are taken overall, as well as over your last 5 and last 10 rounds. This allows you to see trends for the different statistics. Uncombined 9-hole scores are not used in calculating the averages. Combined 9-hole scores are used in calculating the averages.



You can see your averages for a particular course by tapping on the triangle at the top of the screen and choosing a course. HandiTrack will tell you how many rounds you've added for that course, and will present your averages for that course. If you've added at least 5 or 10 scores for that particular course, you'll see the averages for those time periods as well.

Tapping on the "Print to Memo..." button will allow you to print a copy of the averages report to the Memo Pad application on your handheld. This allows you to save the report, synchronize it to your computer. From there you can copy it to another application or print it out.



5.2 Handicap Details

This screen provides a range of information on the scores that were used to calculate your handicap. Only certain numbers of scores are used in the calculation, as indicated on this screen.

Handicap Details

of Scores: 211

Scores Used: Best 10 of last 20

Scores To Be Bumped

	Date	Score	Diff'l
1st	06/30/2002 Stanford	83	10.0
2nd	07/08/2002 Bayonet	92	16.4
3rd	07/08/2002 Poppy Hills	86	8.9

Once you've added 20 scores, each time you add a new score one of your old scores is "bumped" from the calculations. This screen shows you which scores are due to be bumped. This can be useful information. Low scores being bumped means your handicap might soon go up unless you shoot another low score to replace the bumped score. Bumping a higher score with a lower score means your handicap might be on its way down.

5.3 Handicap History

History

Date	Score	Diff'l	HDGP
10/22/2002	81	9.9	6.3
09/22/2002	77	8.3	6.3
09/15/2002	81	11.7	6.4
09/08/2002	85	12.0	5.9
09/01/2002	78	10.6	5.9
08/30/2002	85	14.4	5.7
08/28/2002	73	2.4	5.5
08/27/2002	77	6.2	6.2
08/21/2002	98	26.0	6.3
08/18/2002	79	6.3	6.3 ↓

The handicap history screen shows the trends in your handicap. All of your scores are listed here, along with the differential for that day, and your handicap after that particular score was added. This screen shows if your handicap was trending up or down at a given time.

You can scroll down using the up/down keys on your handheld, or you can tap on the arrows in the upper and lower right side of the screen.

History

Date	Score	Diff'l	HDGP
10/22/2002	81	9.9	6.3
09/22/2002	77	8.3	6.3
09/15/2002	81	11.7	6.4
09/08/2002	85	12.0	5.9
09/01/2002	78	10.6	5.9
08/30/2002	85	14.4	5.7
08/28/2002	73	2.4	5.5
08/27/2002	77	6.2	6.2
08/21/2002	98	26.0	6.3
08/18/2002	79	6.3	6.3 ↓

Score Details

08/27/2002: Crystal Springs, White tees.
Score of 77, differential of 6.2.

You might be curious to know more about one of the scores listed on this screen. Just tap on that score and you'll get the full details about that round, as shown to the left.

If you delete a score, the handicap data presented on this screen might not be accurate for the scores you entered BEFORE deleting the score. All scores added AFTER the deletion will show correct data here. In all cases the handicap shown on the main screen is accurate.



5.4 Handicap Report

The handicap report screen displays your current handicap and shows which of your recent scores were used in calculating the handicap.

Handicap Report

Current Handicap 6.3

1-4	81	77 U	81	85
5-8	78	85	73 U	77 U
9-12	98	79 U	71 U	86
13-16	80 U	76 U	81 U	81 U
17-20	76	86 U	92	83

A "U" after the score indicates that this score was used in the handicap calculations. This indicates that it was one of the better rounds played recently.

Tapping on any of the scores displayed will display the detail for the round.

5.5 Personal Records

Ever wonder what your personal records are, either overall or at a particular course? HandiTrack can tell you.

Records **Range Not In Use**

Course ▼ All Combined

211 Rounds **Ever Last5 Last10**

Lowest Score	71	77	73
Lowest Diff'l	2.4	8.3	2.4
Lowest Hdcp	5.5	5.9	5.5
Lowest Putts	24	31	31
Highest GIR	13	9	13
Highest Fwys	12	9	12

Just enter the personal records screen, and everything is calculated for you. The different records are calculated overall, and also over your last 5 and last 10 rounds, allowing you to see trends. Uncombined 9-hole scores are not used in calculating the records. Combined 9-hole scores are used in calculating the records.

You can find your records for a particular course by tapping on triangle next to the word "course". This will allow you to choose from all the courses you've played. HandiTrack will tell you how many rounds you've played on that course, and will show you the records for that course.

Tapping on the "Print to Memo..." button will allow you to print a copy of the averages report to the Memo Pad application on your handheld. This allows you to save the report, synchronize it to your computer. From there you can copy it to another application or print it out.



Records Range Not In Use

Course ▼ All Combined
211 Rounds **Ever Last5 Last10**
Lowest Score 71 77 73

Best Score in Last 10

08/28/2002: Santa Clara, Gold tees. Score of 73, differential of 2.4.

Who can resist basking in the past glory of a good round? You can find out more about each of your records by tapping on any of the records listed on the personal records screen. In this example, we've tapped on the "73" for the lowest score in the last 10 rounds. This pops up a screen showing the details for that particular round.

5.6 Score To Lower

Score To Lower

Current Handicap
6.3

Course ▼ Balata Hills
Tees ▼ Blue
Holes ▼ 18 Holes
Rating 72.4 Slope 133

Score To Lower	Diff To Lower
81	7.3

The score to lower screen will show you the score you need to shoot on a particular course in order to lower your handicap. This can be useful to establish a target score for your next round. Choose a course and tee combo, and the rating and slope information will be filled in automatically. Then tap on the "Calculate" button, and HandiTrack will calculate the score you need to shoot.

5.7 Export Scores (To .CSV File)

The export scores screen allows you to export your score data into your Memo Pad application in Comma Separated Values (CSV) format. Exporting in .csv format allows common spreadsheet programs (like Excel) or database programs (like Access) to read the files.

Export Scores (to CSV)

Range Not In Use

Export Report?

Do you want to export a comma separated value (CSV) file with your score data to the memo pad?

Once the data is in the memo pad you can perform a HotSync operation to transfer the data to your desktop computer. Access the memo(s) on your desktop via the Palm Desktop or your desktop Personal Information Manager (PIM) of choice. You can then copy and paste the data out of the memos into a file named "YourFileName.csv". Typically the ".csv" file type can then be opened with Excel or a similar spreadsheet program.

Common uses for the .csv file once on your desktop computer include:

- 1) Charting and graphs: You can carry out analysis of your golf score info using the capabilities of your desktop machine.



- 2) Backup of data: The .csv file serves as an additional form of backup of your golf score data. Your HandiTrack data is automatically backed up every time you perform a HotSync operation.

5.8 Edit Menu And Edit Course/Tee Combos



The edit menu provides a number of screens that allow you to see which data is stored in the system, and allows you to delete items that are no longer useful.



The Edit Course/Tee Combos screen allows you to update the number of fairways for a given course. If you have upgraded from a prior version of HandiTrack, a value of 14 fairways is automatically inserted. This screen allows you to change the value to the correct number of fairways.

SPEED TIP: Certain features of the Add Score screen will perform more quickly when there are fewer course/tee combos stored in HandiTrack. Thus you might want to delete some course/tee combo records if you do not intend to play the courses on a regular basis.

Scores previously entered for that combo will NOT be affected. Statistics will NOT be affected. You can always re-enter the data if you play the course again.

It is OK to delete courses and tees that you don't plan on playing again. Scores you've previously added using the course or tees will remain intact and will still be used in the handicap calculations. You might choose to delete such records since it will make the dropdown lists in the add score screen shorter and easier to use when adding scores.



5.9 Configure Options

This screen allows you to elect which statistics to track when you add a score.

Configure Options

- ☒ Track Away/Tourney
- ☒ Track Number of Putts
- ☒ Track Greens In Regulation (GIR)
- ☒ Track Fairways Hit

Stats & Reports Range

☒ Use Date Range
From: 12/11/2001 To: 12/11/2002

☐ Use Most Recent Scores

OK Cancel and Return

A checkmark next to a value means that the statistic will be tracked and that the field will show up on the "Add a Score" screen. Tap on a checkmark to toggle an option off.

These statistics do NOT enter into the handicap calculations, so it is OK not to track them.

5.10 Appearance Preferences

This screen allows you to choose the look of some of HandiTrack's on-screen elements. If your handheld does not support color, you may not be able to access this screen, or you may only be able to set the line thickness.

Appearance Prefs

Sample

Line Thickness (?)
(Main Screen Only)
☐ Thin ☒ Thick

Line Color (?)
☒ Use Default

OK Cancel and Return

Line Thickness – This setting determines the thickness of the lines used to draw the rectangles on the main screen. Thicker lines tend to look better with certain color choices. This setting lets you choose accordingly. Changing between the options will change the sample so that you can determine which setting you prefer. Note that this setting only affects the lines drawn on the main screen. Other screens

Line Color – This setting determines the color that will be used to draw lines on certain screens within HandiTrack. To change the color uncheck the "Use Default" check box, and then tap on the "Pick Color" button to choose a color.

HandiTrack Line Color Setting	Effect
"Use Default" is checked	HandiTrack will draw lines using the same color used in all other applications on your handheld.
"Use Default" is unchecked	HandiTrack will draw lines using the color you choose. This setting will have no effect on any other applications on your handheld.



Certain handhelds and certain versions of Palm OS allow you to choose a system-wide color scheme that determines how lines and other objects are drawn. You can use those same settings within HandiTrack by simply leaving the "Use Default" box checked.

5.11 Stats and Reports Range

Configure Options

- ☒ Track Away/Tourney
- ☒ Track Number of Putts
- ☒ Track Greens In Regulation (GIR)
- ☒ Track Fairways Hit

Stats & Reports Range

☒ Use Date Range
From: 12/11/2001 To: 12/11/2002

☐ Use Most Recent Scores

OK Cancel and Return

The "Stats and Reports Range" section allows you to specify a range to be used for the various statistical reports within HandiTrack. This is useful if you have a large number of scores entered but you would like to report only on a certain time period or you would like to see statistics for only, say, the most recent 25 rounds. All scores will be used if neither type of range is selected.

An indicator showing if a range is in use is shown at the top of all screens for which a range is possible. These screens are: Averages, Handicap History and Personal Records.

5.12 Diagnostics

This screen outputs information about the internal data structures that HandiTrack uses to do its calculations. This screen would be of use only if you are in contact with HandiTrack support trying to resolve an issue with the product. You have the option of seeing the data on the screen or outputting the data to a memo in the Memo Pad application. This screen has no effect on any of the data or handicap calculations.

5.13 Force Recalculation

This screen will induce a recalculation of your handicap. This can be useful if you are in contact with HandiTrack support and it is determined that for some reason HandiTrack's internal data structures have become out of synch with the data you have entered. This screen will have no effect on the scores or other data stored in the system.



6 Tips and Tricks

You've mastered the basics and tried all of the features of HandiTrack, and now you want more! You've come to the right place.

6.1 Dotted Lines Around Data or Text

A dotted line around text or numbers in HandiTrack is an indication that further information is available. Just tap the screen within the dotted boundary and you'll be presented with further information on the data in question.

6.2 What if? How Will Different Scores Affect My Handicap?

Imagine the following scenarios:

- ❑ You're getting ready for a round at your favorite course, and you'd like to know how different scores from different tees would affect your handicap.
- ❑ You're about to add a score, and you'd like to see what your handicap would have been if you had made a few more putts, or if you hadn't tried to hit a miracle shot out of the trees, over water and sand, to a tight pin.

With HandiTrack you can find out. Just go to the "Add a Score" screen and enter all of the data as you normally would for a round, but DON'T TAP THE DONE BUTTON.

You can enter different values for the score, and then tap on a field other than the score. Your handicap will be recalculated based on the information entered on the screen. You can repeat this process for different courses, tees and scores. Each time you enter a score on the screen, you can tap on another field and HandiTrack will recalculate the values.

6.3 Notes for International Users – Number Formats

HandiTrack allows you to input numbers using the localized numeric format that you specify in the preferences screen on your handheld. HandiTrack will still display numbers using the standard used in the United States, which is to use a period (".") as the decimal separator and a comma (",") as the thousands separator.

NOTE: You must choose an appropriate *country* on your handheld's format preferences screen. Simply choosing a numeric format without choosing the



correct corresponding country may result in HandiTrack using the wrong conventions for numeric input, leading to flawed calculations. If your country is not listed then choose a country that uses the formats you prefer.

You can access the format preferences screen by finding and starting the "Prefs" application on your handheld. Then choose "Formats" from the drop-down list in the upper right of the screen.

6.4 Let Us Know What You Think

We are always looking for ways to improve HandiTrack. If you have ideas on new features, or ideas on how to make the existing features easier to use, please let us know. Our users have suggested many of the features in HandiTrack.

Just send an e-mail to handitrack@yahoo.com. We look forward to hearing from you. Hit 'em straight.