



Copyright © 2002-2005 Epocware / Paragon Software Group, Moscow, Russia

***Multilingual dictionary "SlovoEd" 2.0
for UIQ smartphones
(Sony Ericsson P800/ P900/P910, BenQ P30, Motorola A1000 etc.)***

*Dear customers!
Thank you for buying our software.
It is your interest that inspires us to develop innovative solutions for mobile devices.*

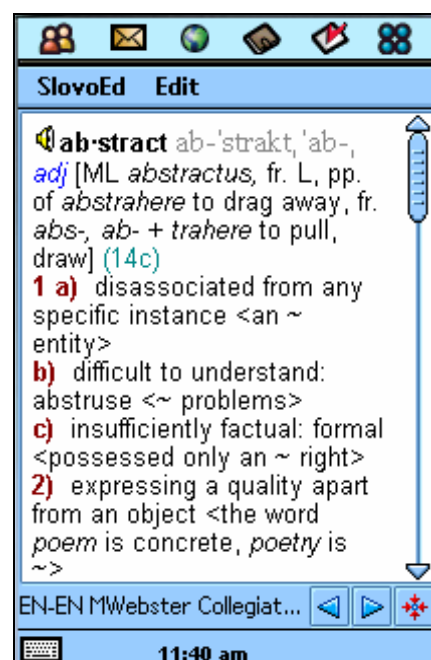
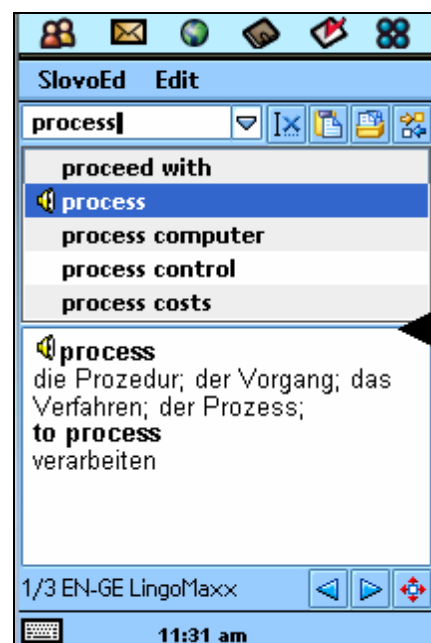
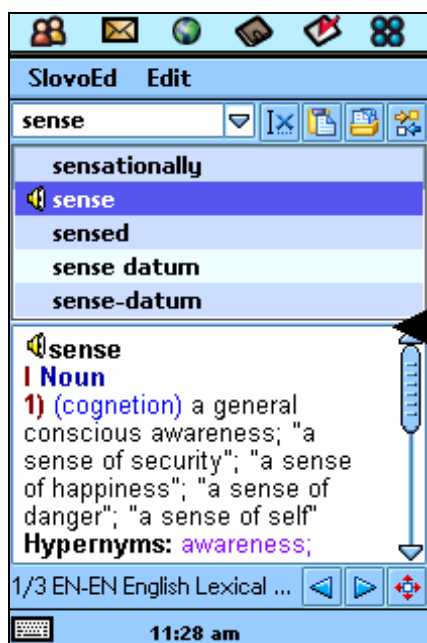
Contents

About SlovoEd.....	3
What is new in "SlovoEd" 2.0.....	4
Main features of the SlovoEd program	4
Language versions of "SlovoEd"	5
Demo-version limitations and registration	6
Installation of "SlovoEd"	6
Installation from the desktop computer.....	6
Installation from the device.....	7
How to use "SlovoEd"	8
Getting started	8
Wildcard search	10
Word input.....	11
Interface	12
Program menu	13
Menu in the main window	13
SlovoEd.....	13
Edit.....	14
Menu in the full screen mode	14
SlovoEd.....	15
Edit.....	15
Choosing dictionary direction and activating dictionaries	16
"SlovoEd" preferences	17
General preferences	17
Word of the Day preferences.....	18
How "SlovoEd" can help you to learn new words	19
Adding Flash Cards and Flash Card Quiz	19
Word of the Day	21
How to create your own dictionary	22
Uninstallation.....	23
Useful information.....	23
How to get the registration code	23
E-care	23
Knowledge Base	24
<i>Appendix: Sound module. Installation and usage</i>	<i>24</i>
Sound Module. Demo-version limitations and registration.	24
Sound module. Installation.....	25
Sound module. Installation from the desktop computer.....	25
Sound module. Installation from the device	26
Sound module. How to use it	26
Sound in the main window	26
Sound in the fullscreen mode	27
Sound in the Flash Card Quiz.....	27
Sound in the Word of the Day	28
Sound Module. Uninstallation.	28

About SlovoEd

SlovoEd is a well-known set of products developed by [Epocware/Paragon Software Group](http://www.epocware.com) for such popular mobile operating systems as Palm OS, Pocket PC/ Windows Mobile, Windows CE Smartphone and Symbian OS. High data compression ratio for dictionaries and high retrieval rate are available thanks to the special technology developed by Paragon Software (SHDD). Our software is absolutely user friendly due to the handy user interface and the wide range of tools which are provided by the dictionary engine: you can look up words and view wordlists as well as use your own dictionary databases created with the help of a special instrument.

This manual describes the version of **SlovoEd** which is compatible with the following UIQ mobile devices: Sony Ericsson P800, Sony Ericsson P900, Sony Ericsson P910, BenQ P30, and Motorola A1000.



What is new in "SlovoEd" 2.0

We develop our dictionaries according to users' needs and the constantly growing functionality of the mobile devices. Several vital functions have appeared in **"SlovoEd" 2.0 for UIQ smartphones**, making your work more comfortable.

New version of **"SlovoEd"** has more language learning functions: you can learn new words any time you want.

- Word of the Day

Learn new words without scanning the dictionary! Every day a word is chosen from the dictionary at random and is shown to you (once a day or on every start of the program).

Other new features:

- using **"SlovoEd"** program you can install several dictionary databases on one mobile device

Their dictionary databases are merged (i. e. the word search is carried out among all words from all these dictionaries)

- several colour schemes

Personalize your dictionary by choosing one of the available colour skins.

- sound available

You can listen to the pronunciation of a word – provided that an appropriate Sound Module is installed (see **"Appendix: Sound module. Installation and usage"**).

- you can now use your own dictionary created by using a compiler installed on your desktop computer

Advanced users can create their own dictionaries using a special program (**"SlovoEd Studio & Conversion Tools"**) and their dictionaries with **SlovoEd** engine on their smartphones.

Main features of the SlovoEd program

These are the main features which have always distinguished **"SlovoEd"** program, providing you maximum convenience and highest possible result:

- Special word learning method

You can save certain words to Flash Cards and then take a Flash Cards Quiz to test yourself

- search history

Your last 30 queries are saved in the history – you can come back to the entries you have seen at any time.

Using SlovoEd dictionary you get:

- high-quality dictionary databases prepared by professional linguists
- large number of dictionary entries
- ability to install **SlovoEd** on an expansion card
- convenient multicolor formatting of word entries and hyperlinks between entries

- phonetic transcription in a dictionary entry (for some dictionaries)
- easy switching between dictionaries
- full-screen mode to show translations

All those features make the navigation easy and the use of the program convenient.

Language versions of "SlovoEd"

Dictionaries for the following languages are available:

[English](#)
[Bulgarian](#)
[Hungarian](#)
[Dutch](#)
[Greek](#)
[Danish](#)
[Spanish](#)
[Italian](#)
[Latin](#)

[Lithuanian](#)
[German](#)
[Norwegian](#)
[Polish](#)
[Portuguese](#)
[Romanian](#)
[Russian](#)
[Serbian](#)

[Slovenian](#)
[Turkish](#)
[Ukrainian](#)
[French](#)
[Croatian](#)
[Czech](#)
[Swedish](#)
[Estonian](#)

We are widening the range of languages: Catalan, Vietnamese, Armenian and Slovak dictionaries are now in the development stage.

The interface of the dictionary is available in English, German, French, Spanish, Italian, Dutch and Russian.

Some language versions of the dictionaries are available in several editions: **compact**, **extended**, and others (depending on the number of entries). You can choose any edition according to your needs and device memory limitations.

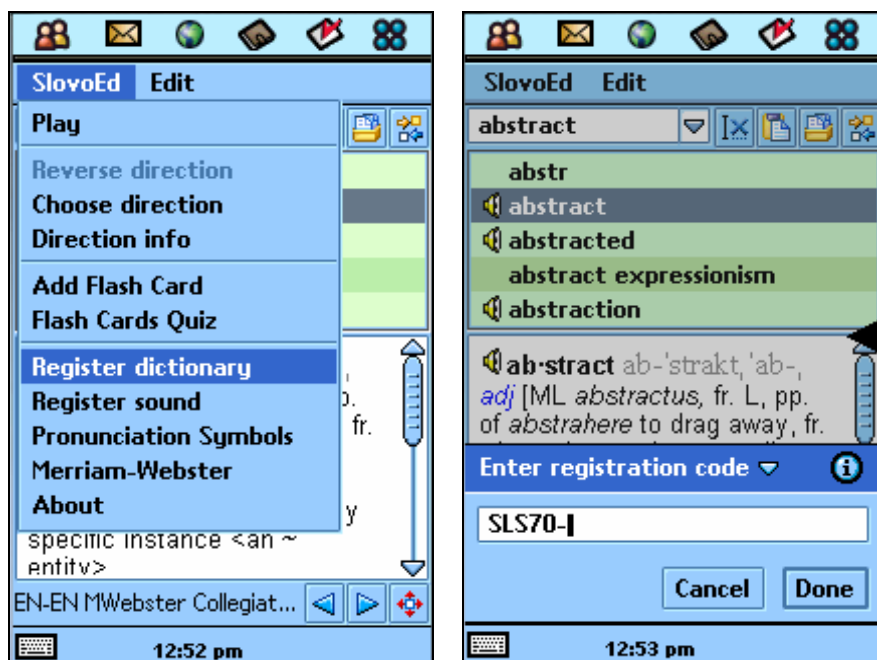
Please, visit our web-site to find out more about the dictionaries available for your language:
<http://www.epocware.com/>.

Demo-version limitations and registration

The more you use an unregistered dictionary, the more you get a message saying your copy is unregistered instead of the translation. To register the dictionary, open the menu **SlovoEd > Register dictionary**.

Please, be accurate when you type in the registration code: do not mix up zero with letter O, you shouldn't enter any unnecessary spaces in the input line.

You receive the registration code for your dictionary after purchasing the software (the detailed info about how to obtain your registration code is available in the section: "**How to get the registration code**").



NOTE

"SlovoEd" 1.0-1.2 and "SlovoEd" 2.0 are not compatible. If a registered copy of "SlovoEd" 1.0-1.2 is installed on your device, it will be replaced by "SlovoEd" 2.0 when you install "SlovoEd" 2.0. If you want to use a commercial version of the program, you should either delete "SlovoEd" 2.0 and reinstall "SlovoEd" 1.0 or purchase a commercial version of "SlovoEd" 2.0 (a special discount will be given to all registered users of "SlovoEd" 1.0). Please, visit our site to get the information about our products: <http://www.epocware.com>.

Installation of "SlovoEd"

ATTENTION!

Don't forget to make a backup copy of your mobile device data before the installation of any program (including "SlovoEd") to avoid the accidental loss of important data.

You can install the applications using 2 different ways: from a *.sis file or from an *.exe file.

Using a *.sis file, you can install "SlovoEd" directly from the device or from the desktop computer. Installation from the *.sis file requires that **the main memory** of your device have 3 times as much free space as the volume of the file (no matter what is the source media). Therefore, this way of installation should be used only if there is enough free space in **the main memory** of the device.

We recommend that you always use the *.exe file to avoid any difficulties.

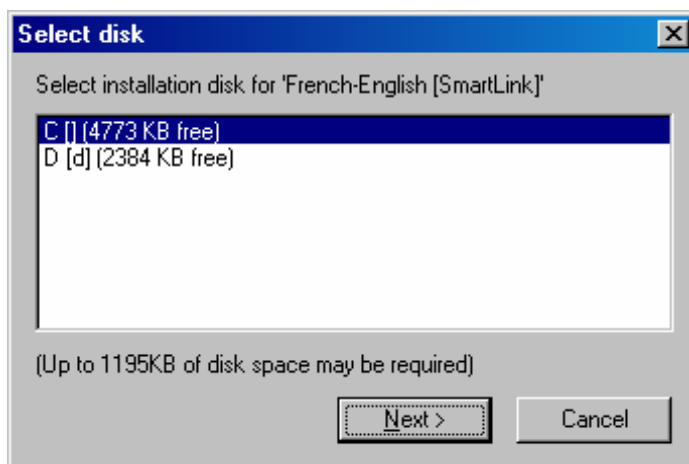
Installation from the desktop computer

To install the dictionary, you should do the following:

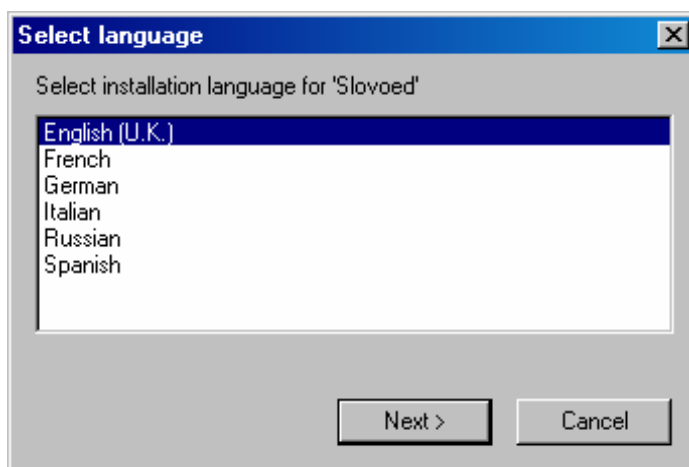
1. Establish the connection between your smartphone and the desktop computer, using Bluetooth, Infrared port or a cable.

2. Run the installation file – *.exe (recommended) or *.sis – and follow the instructions of the installation program.

3. A dialog where you can select the destination media will appear. Select disk C if you want the dictionary to be installed into the main memory, or disk D (E) if you want the application to be installed on an expansion card.



4. In the next window you should select the language of the program interface.



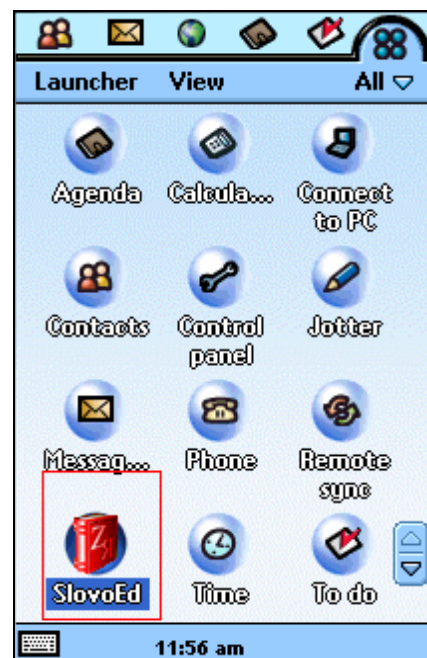
Installation from the device

ATTENTION!

To install a program on a Symbian UIQ device, there should be 3 times as much free space in the main memory of the device as the program installation file takes.


1. Copy the installation file (*.sis) to your device (using Bluetooth, Infrared or by some other method). Depending on a model of the device, you may need to run a special application to make the copying of the files possible. For example, if your smartphone is Motorola A1000, launch Motorola Desktop Suite before copying the *.sis file to the device.
2. Go to the applications window.
3. Open the menu **Launcher > Install** (for Motorola smartphones) or **Application > Install** (for Sony Ericsson smartphones).
4. Select the dictionary file (for example, SlovoEd_EN_SP_[Spes_Editorial].sis) in the list of the *.sis files available for installation and tap **Install**.

After the installation the "SlovoEd" icon should appear in the list of applications.




How to use "SlovoEd"

Getting started

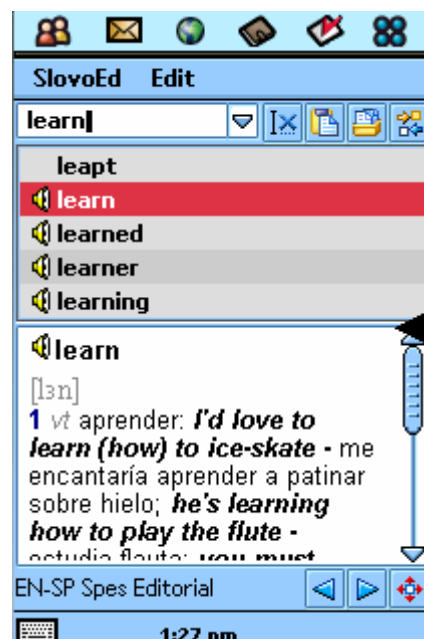
When you run the "SlovoEd" dictionary for the first time, you will see the Word of the Day window (for more information see "Word of the Day"). Tap the  arrow in the lower right corner to proceed to the main window of the dictionary.



You can select words from the wordlist in the main window of the program, view dictionary entries in the full screen mode or use the wildcard search mode, which helps you look up the words even if you are not sure about their exact spelling. The following sections describe different windows of the program and main menus of the program.

In the main dictionary window you can scroll the wordlist using Jog Dial or by tapping the  arrows, or enter the word you would like to look up.

To view the translation of the selected word tap it or press Jog Dial. If the word is present in the dictionary database, you will see its translation. Otherwise, you will see the words which are closest to it in the wordlist.



Wildcard search

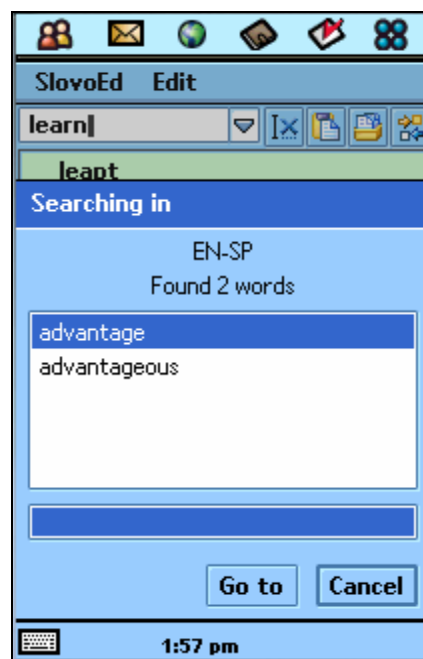
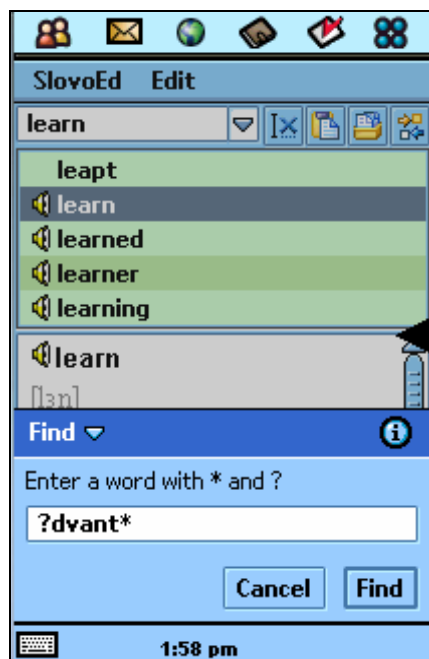
Use Wildcard search if you are not sure about how the word is spelled or if you want to find all words which fall under the same pattern (for example, while solving a crossword, you need to think of a 6-letter word beginning with un-).

Open the **Edit** menu from the main window of the program and select **Wildcard search**.

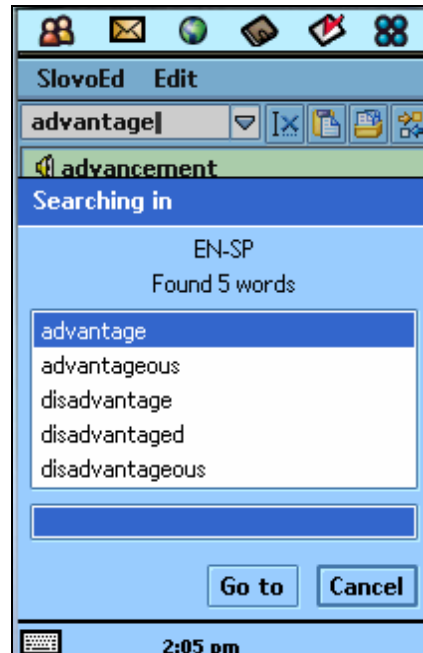
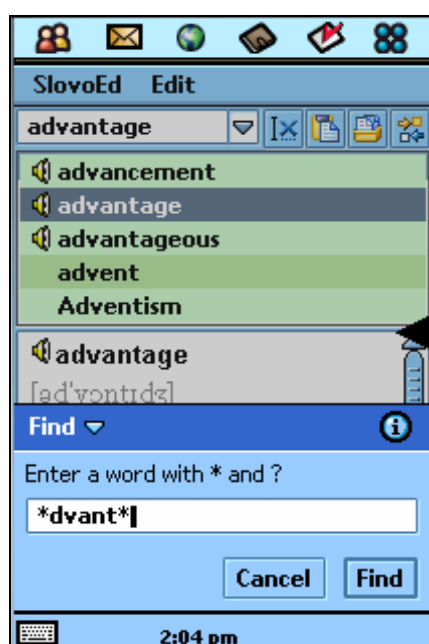
Use ? instead of one character and * instead of a group of characters (zero or more) to form the query.

EXAMPLE

If your query was *?dvant**, you will see such words as *advantage* and *advantageous* in the results of the search, but the word *disadvantage* will not be shown as "disa" is more than 1 character.



If your query was **dvant**, the word *disadvantage* will be included in the search results.




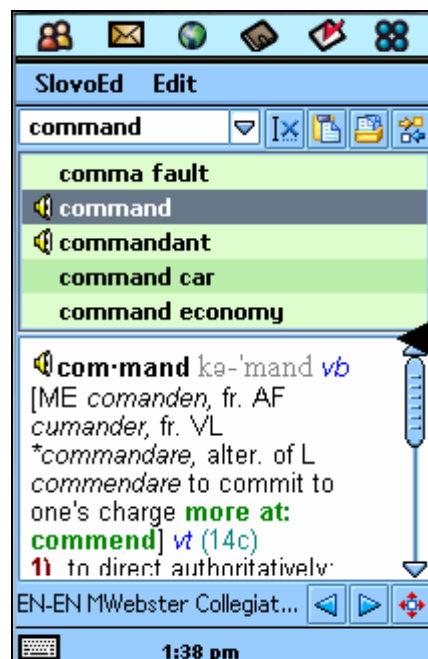
Word input

The picture on the right shows the main dictionary window, and the input line is on the top of it.

You can use the following input methods:

- Typing in a word using the keyboard of your device
- Writing a word with the stylus – using a handwriting recognition system
- Using an onscreen keyboard
- Using **Paste** item in the **Edit** menu.

You can also use the  paste button to paste the text from the clipboard.



ATTENTION!

Only a piece of text copied into the clipboard in the "Plain text" format can be pasted into the dictionary. It means that you cannot copy text from some applications to paste it later on into the dictionary input line. For example, you cannot copy text from Agenda while you can copy text from Jotter, Tasks, Notes, Word, and Contacts.


If a word entered in the edit field belongs to the dictionary database, its translation will be displayed under the wordlist automatically except dictionary databases of size more than 5Mb (or the number of word entries more than 100 000. In such dictionaries, you will see the translation of a word only if you tap the word in the dictionary wordlist).

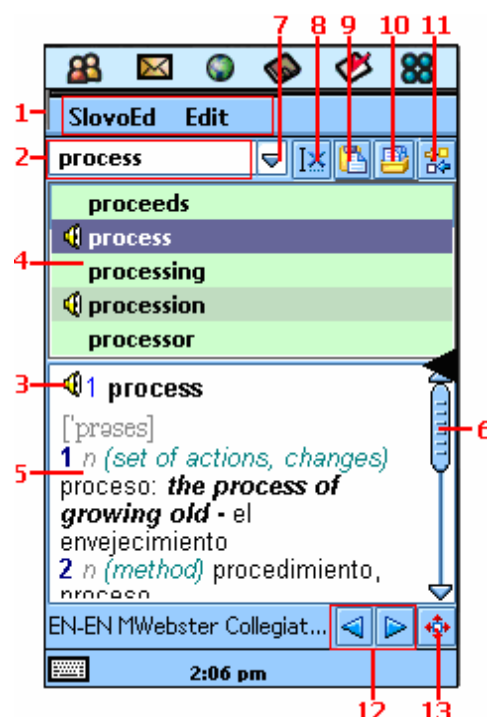
If a word entered in the edit field does not exist in the dictionary, you can get translation of a neighboring word if you tap it by stylus or if you move selection on this word using Jog Dial and then press Jog Dial. If you press Jog Dial once again, you will see the translation in the full screen mode. To exit the full screen mode, press Jog Dial again.

If you double tap any word in the dictionary wordlist, you will see its translation in the full screen mode.

Interface

The main elements of the interface in the main window of the dictionary are:

1. The **menu** of the program.
2. **Input line**.
3. The  **Sound icon**, showing that the pronunciation of this word is present in the Sound Module (it is shown only if the Sound Module for the language is installed). Tap the sound icon near the entry title to listen to the word.
4. **Wordlist**.
5. **Dictionary entry**. You can maximize it using **Full screen** item of the **Edit** menu or button number 13.
6. **Scrollbar**. Use it to scroll a long entry if it doesn't fit the dictionary entry field.
7. **History button**. Tap the downwards pointing arrow to view the list of 10 previous queries.



8. **Clear**. Clears the input line.
9. **Paste**. Pastes the text from clipboard into the input line.
10. **Add to cards** button. Saves the word to card for studying.
11. **Switch dictionaries**. Switches to the reverse dictionary (for example, if you are reading an entry of an English-Spanish dictionary, tapping this button will switch the dictionary to the Spanish-English dictionary). The word that you have typed in the input line will remain there if its symbols belong to the alphabet of the language of the reverse dictionary. For example, if you switch from French-English to English-French dictionary the word will remain in the input line, because both French and English use Latin alphabet, but if you switch to the reverse dictionary after using English-Greek dictionary, the input line will be clear.

You can also switch the dictionary in one of the following ways:

- Using the menu item **SlovoEd > Choose direction**.
- By typing in a word in the alphabet that does not belong to the current language.
- By double tap on a word in the translation field (almost each word in the translation field is a link to another word entry).

12. **Next word/Previous word** buttons. Use this menu item to view the next (or previous) entry.

If the translation of the word is present in several active dictionaries for the current direction, these buttons will allow you to view the translation of this word from the previous/next dictionaries, and after this the next word from the wordlist will be shown. The selection of the translation direction is described in section "**Choosing dictionary direction and activating dictionaries**".

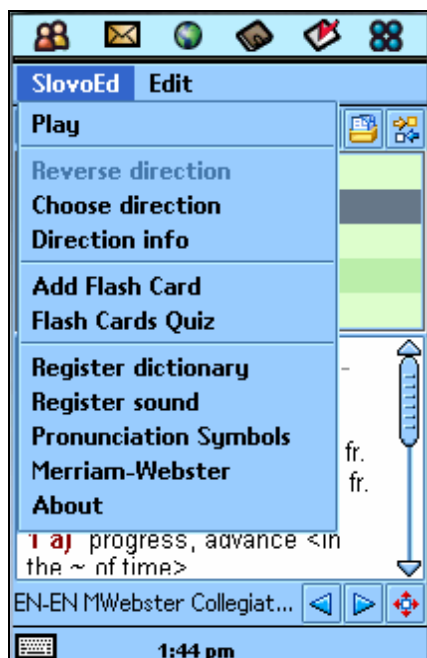
13. **To the full screen** button. Tap it once more to go back to the main window.

Program menu

This menu gives access to several important functions and all preferences of the dictionary.

Menu in the main window

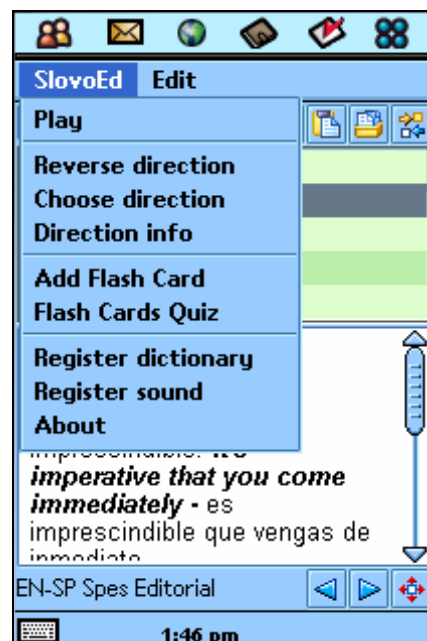
The menu has two sections:



SlovoEd

When you select **SlovoEd** in the dictionary entry window, the following menu opens:

- **Play.** Play the sound for this word (this item appears only if the Sound Module is installed and will be active only if the pronunciation of the word is present in the Sound Module).
- **Reverse dictionary.** When you select this item, the program switches to the reverse translation direction. For example, if you were viewing an entry from the French-English dictionary, after selecting this item, the English-French translation direction will be active.
- **Choose direction.** This item allows you to change the dictionary direction (see "**Choosing dictionary direction and activating dictionaries**").
- **Direction info.** Select this item to get such information as the total number of entries in the activated dictionary databases and the Sound Module.
- **Add Flash Card.** This menu item allows you to save a word to a card for studying. After you have added some new cards, you can take a Flash Card Quiz, which will help you learn new words. For more information about this option see "**How "SlovoEd" can help you to learn new words**".
- **Flash Cards Quiz.** This menu item allows you to start the Flash Cards Quiz. For more information about the Flash Card Quiz see "**How "SlovoEd" can help you to learn new words**".

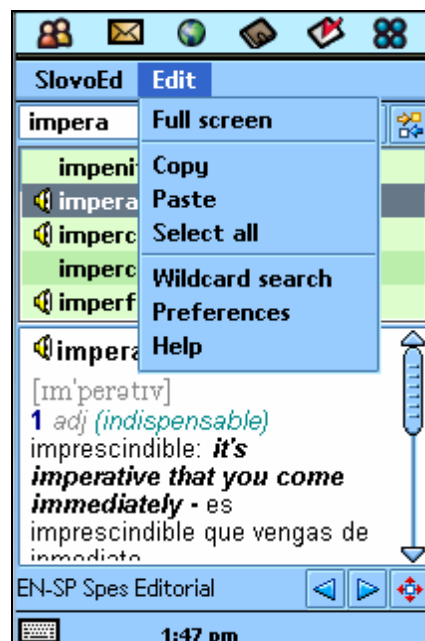


- **Register dictionary.** Use this item to register the dictionary.
- **Register sound.** Use this item to register the Sound Module.
- **About.** This menu item contains the information on the core version of the dictionary.



Edit

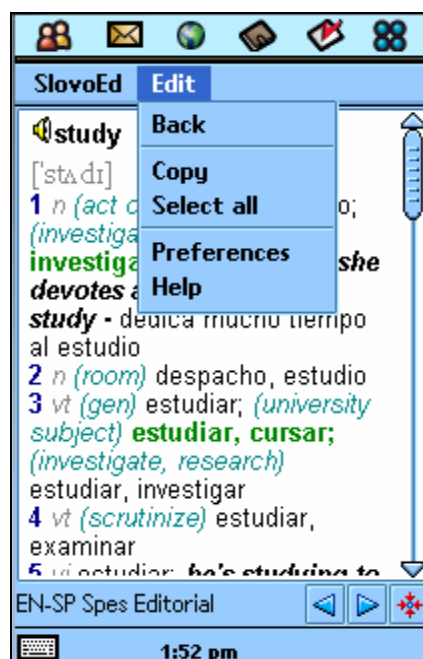
Using this menu section you can perform different operations with the text in the input line or the dictionary entry or change the settings of the program.

- **Full screen.** Maximizes the dictionary entry window.
- **Copy.** Copies the selected text to the clipboard.
- **Paste.** Pastes the text from the clipboard into the input line.
- **Select all.** Selects all text in the dictionary entry.
- **Wildcard search.** Allows you to search a word using wildcards "Wildcard search".
- **Preferences.** This item allows you to adjust the settings of the program according to your needs. The preferences of the dictionary are described in the ""SlovoEd" preferences" section.
- **Help.** Select this menu item to get help on the use of the program.



Menu in the full screen mode

If the dictionary entry is long and you find viewing it in the main window inconvenient, you can maximize the entry window using the arrows  icon on the toolbar at the bottom of the screen. To go back to the main window of the program, tap the arrows  in the full screen mode. The menu in the full-screen mode contains 2 sections: **SlovoEd** and **Edit**.



SlovoEd

In this menu section you can select:

- **Play.** Play the sound for this word (this item appears only if the Sound Module is installed and will be active only if the pronunciation of the word is present in the Sound Module).
- **Next word.** Shows the next dictionary entry.
- **Previous word.** Shows the previous dictionary entry.

If the translation of the word is present in several active dictionaries for the current direction these buttons will allow you to view the translation of this word from the previous/next dictionaries, and after this the next (or previous) word from the wordlist will be shown.

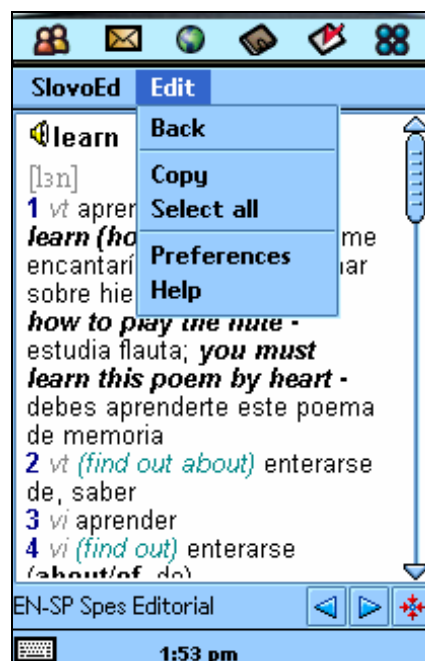
- **Add Flash Card.** Saves current word to a card for studying (see "**How "SlovoEd" can help you to learn new words**").



Edit

This menu section contains the following items:

- **Back.** Takes you back to the main window.
- **Copy.** Copies the selected text.
- **Select all.** Selects the text in the dictionary entry.
- **Preferences.** This menu item allows you to change the settings of the program (for details see "**"SlovoEd" preferences**").
- **Help.** Use this menu item to get help on the use of the program.





Choosing dictionary direction and activating dictionaries

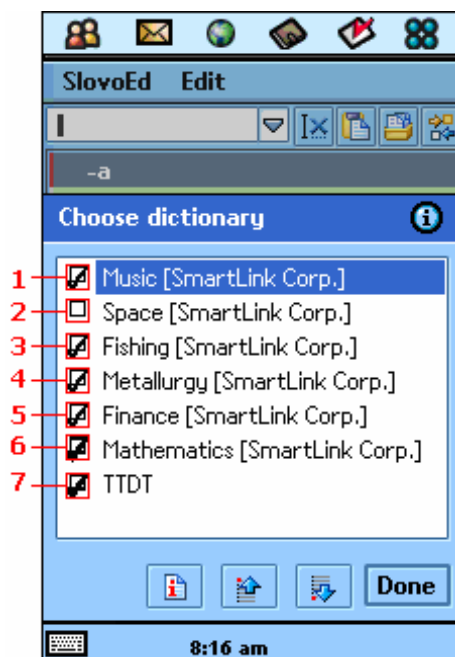
If you select **SlovoEd > Choose direction**, you will proceed to the **Choose direction** window. The first figure on the right shows the number of active dictionaries for the selected direction and the second shows the total number of the dictionaries installed for this direction. Press **Details**, to see the list of the dictionaries which are installed for the selected translation direction.



In the Choose dictionary window you can select what dictionaries for the current translation direction will be used for the word lookup. The picture on the right shows that the dictionaries marked with 1,3,4,5,6, and 7 are activated and the dictionary marked with 2 is deactivated.

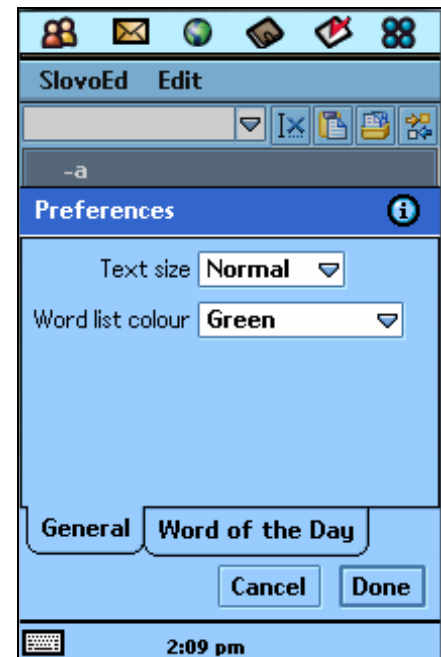
The databases of the active dictionaries for one translation direction are merged. It means that when you want to look up a word the program will search this word in all active dictionaries. The priorities (indicated by numbers on the screenshot) define the order in which the translations from the active dictionaries will be shown when you have several dictionaries installed for one translation direction and the translation of the word is present in more than one dictionary.

Use  and  to change the priorities of the active dictionaries. Tap the info button to open the window with information on the dictionary database supplier and the number of dictionary entries.



"SlovoEd" preferences

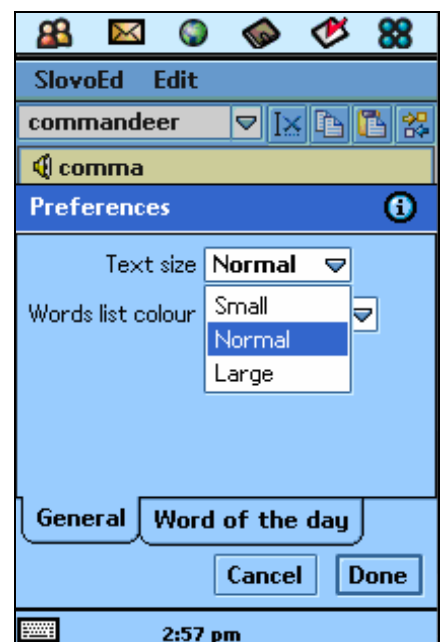
Select **Edit > Preferences** to change the settings of the dictionary according to your preferences. The settings of "SlovoEd 2.0" include: **General preferences** and **Word of the Day preferences**.



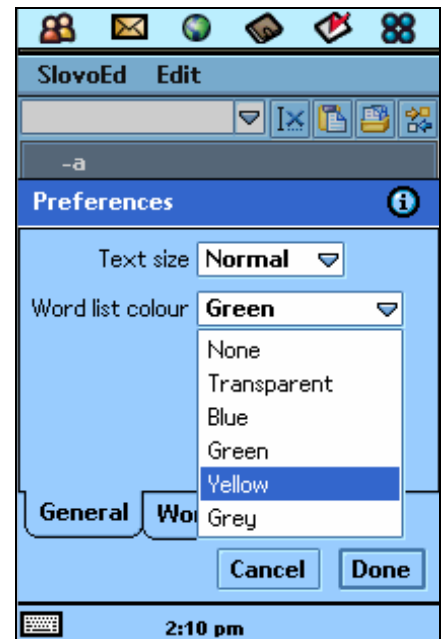
General preferences

You can change color scheme or the text size of the dictionary entries using **General** preferences.

- The **Text size** option allows you to select the font of the dictionary entry (Small, Normal or Large).



- The **Word list colour** allows you to select the colour scheme of the dictionary from the list.




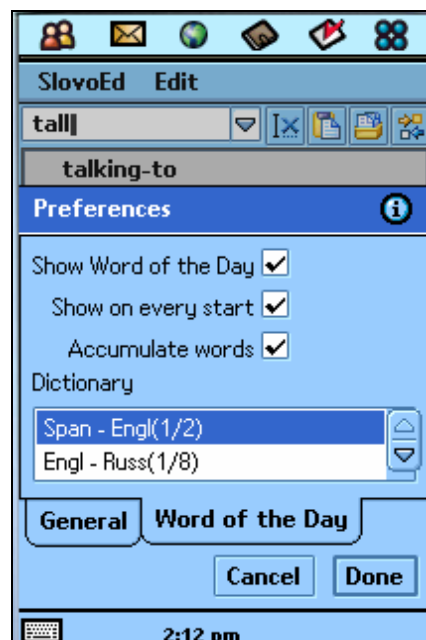
Word of the Day preferences

The Word of the Day is a new word learning function introduced in the 2.0 version of "SlovoEd" (see "How "SlovoEd" can help you to learn new words"). How "SlovoEd" can help you to learn new words

This section describes the preferences of this function.

- **Show Word of the Day.** If this option is not activated, the Word of the Day will not be shown to you on the start of the program. By default, this function is activated.

- **Show on every start.** You should checkbox it if you want the Word of the Day to be shown on every start of the program, or unmark this option if you want to view the Word of the Day only once a day, on the first start of the program.
- **Accumulate words.** If you don't use the dictionary for several days, the words will be accumulated and the next time you run the program you will be able to view all of the accumulated words using the  next word button in the Word of the Day window.
- **Dictionary.** Here you can select the dictionary direction which will be used for the Word of the Day.



How "SlovoEd" can help you to learn new words

"SlovoEd" 2.0 has two functions that can help you to expand your vocabulary – **Word of the Day** and **Flash Cards Quiz**.

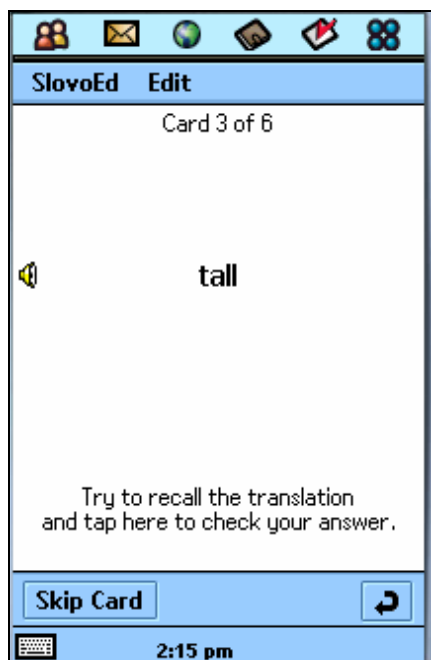
Adding Flash Cards and Flash Card Quiz

"SlovoEd" has a convenient function which can help you to learn new words. You can add new words to cards and take a quiz to learn their translations. To add a card, select **SlovoEd** menu from the main window, the Word of the Day window or from the full screen mode and select **Add Flash Card**.



After you have added some Flash Cards, try to take a quiz to see if you know their translation. To start the quiz select **Flash cards quiz** the **SlovoEd** menu. Several cards will be taken at random from the saved Flash Cards and demonstrated to you. First, you should recall the translation of the word you see on the screen. Tap the screen to see the right translation, and a window with dictionary translation of this word will appear. There are two buttons in the translation window: **Right** and **Wrong**. If you think that the translation you

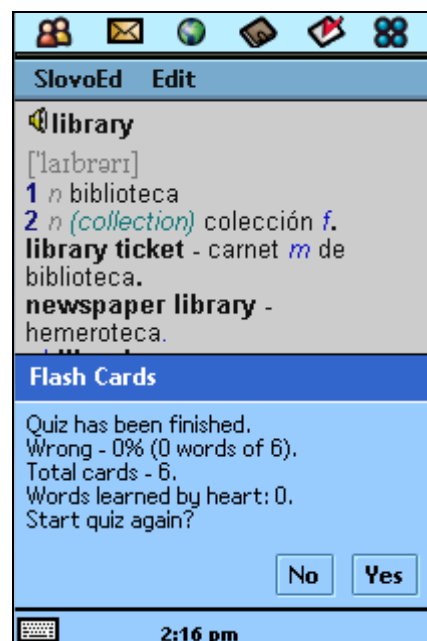
recalled is correct, select **Right**, otherwise select **Wrong**. To pass on directly to the next Flash Card, press the button **Skip Card**. The word you skipped will not be included in the quiz statistics.



SlovoEd will save the result and show the quiz statistics when the quiz is finished: the number of mistakes, the total number of cards shown and the number of learned words.

Tap **Yes** to pass the quiz again, or tap **No** to go back to the main window of the program.

You can take the quiz again later. The program saves statistics for several quizzes and if you often successfully recall the translation for a certain word, this word is marked as "learned" and won't be included it in the quiz any more. You can also delete a card manually from the quiz menu.




The quiz menu has 2 sections: **SlovoEd** and **Edit**.

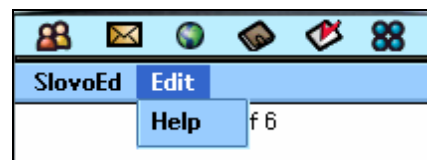
The **SlovoEd** menu section contains the following items:

- **Play.** Allows you to listen to the pronunciation of the word (this menu item appears only when the Sound Module is installed and contains the sound for this word).
- **Auto play.** If you select this item the pronunciation of every word that appears on the screen will be played automatically (provided that it is included in the Sound module installed on your device). If this option is switched off, you can listen to the pronunciation only using the **Play** item.
- **Delete Flash Card.** Allows you to delete the current Flash Card.
- **Delete all Flash Cards.** Allows you to delete all Flash Cards for the current dictionary direction.



You can open the help for the quiz using the **Help** item of the **Edit** menu.

You can go back to the main window at any moment using the  arrow button.



Word of the Day

Apart from the Flash Cards Quiz, "SlovoEd" 2.0 has another word-learning function – Word of the Day. Every day a word will be chosen at random order from the dictionary and shown to you. You can look through its translation and save it to a card if you want to learn it.

The Word of the Day menu has 2 sections:

SlovoEd section:

- **Play.** Allows you to listen to the pronunciation of the word (this menu item appears only when the Sound Module is installed and contains the sound for this word).
- **Add Flash Card.** Adds current word to a Flash Card for Studying.
- **Back.** Takes you back to the main dictionary window.
- **Preferences.** Opens the dictionary preferences window.

Edit section:

- **Help.** Opens the help about the use of the Word of the Day function.



The settings of this function are available from **Edit > Preferences**, **Word of the Day** tab. For more information see "**Word of the Day preferences**".

How to create your own dictionary

The "SlovoEd" application for any mobile platform consists of 2 parts: the dictionary engine and the dictionary databases. Paragon Software (SHDD) has developed "SlovoEd Studio" – a special toolkit for creating *.prc databases. We offer this toolkit to all users who are interested in creating their own dictionaries. You can download the free copy of "SlovoEd" Studio at <http://www.studio.penreader.com/>.

SlovoEd Studio & Conversion Tools is a freeware program for advanced users. It allows you to convert dictionary databases of different formats to the .prc format supported by the "SlovoEd" dictionary engine. With "SlovoEd" Studio & Conversion Tools you can create dictionary databases out of the source file you have chosen and set the layout that you prefer.

SlovoEd Studio & Conversion Tools program is installed on the desktop computer. The process is very easy and fast. The compiler allows you to convert the resource database (*.dsl, *.wb, *.csv) into the *.prc format, which can be used with "SlovoEd" dictionaries.

NOTE

*.dsl is the format of Lingvo dictionaries (for more information see [http://www.lingvoda.ru/dictionaries/create.asp#p3](http://www.lingvoda.ru/dictionaries/create.asp#p3;);

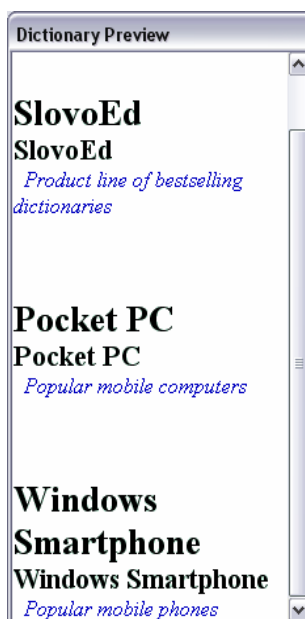
*.csv - comma separated values (Microsoft Excel);

*.wb is a popular web-dictionaries format (for an example, see <http://www.freelang.net/dictionary/index.html>).

"SlovoEd Studio" not only helps you to compile a dictionary database, but also helps you to convert any dictionary-like data to a handy format.

For example, you can organize a contact list or a kind of corporative database which contains information on the products of your company.

This utility is more convenient than the standard instruments (such as Pocket Excel or a built-in Address book), because it allows to markup all the entries quickly according to the logical structure of the entries, and because the *.prc database which you get at the output is compatible with all mobile platforms. Another advantage of a *.prc database is that it is significantly more compact than an ordinary database, and the "SlovoEd" engine guarantees the fast search even if the *.prc file contains many thousand entries.



ATTENTION!

There is a technical constraint: the filename of the user dictionary cannot start with symbol "1".

To install your *.prc database on your device, you should copy it to your device. If "SlovoEd" is installed in the main memory of the device, copy the file to C:\System\Apps\SlovoEdDicts. If "SlovoEd" is installed a memory card, copy the files to E:\System\Apps\SlovoEdDicts\ (or D:\System\Apps\SlovoEdDicts\ on some devices). If the "SlovoEd" application was open when you were copying the files, close it and then open it again to see the new dictionaries in the list of available dictionaries.

NOTE

You can use the standard tools (such as Motorola Desktop Suite) to copy the new dictionaries to the device. If the standard software does not provide this function, you can use other utilities – for example, **FileManager** (www.epocware.com). **FileManager** allows to manage the files and folders on your Symbian phone from your desktop PC.

Uninstallation

To uninstall the dictionary, do the following:

1. Open the applications window.
2. Select **Launcher > Uninstall** (for Motorola) or **Applications > Uninstall** (for SonyEricsson devices).
3. To uninstall the dictionary engine select **SlovoEd** in the list of available applications and tap **Uninstall**.
4. To uninstall the dictionary databases select them in the list of available applications and tap **Uninstall**.

Useful information

How to get the registration code

We invite you to our web-site <http://www.epocware.com>, devoted to dictionaries and other applications for smartphones developed by Epocware/Paragon Software Group. There you can find demo-versions and detailed information about more than 150 different dictionaries available for 30 languages.

Visit our site: <http://www.epocware.com>, and select the dictionary you want to purchase; after this you can get the registration code using secure on-line ordering with your credit card via the e-Shop. Do not worry, we never get your credit card information, ordering is proceeded through specialized American and European e-commerce systems.

This way of payment provides the "real-time fulfillment", that means that your registration code will be emailed to you immediately.

E-care

We recommend that you register in our **E-Care** system which helps to automatically register and update your programs. To register the program you need the registration code for your software.

E-Care allows you to:

- get free updates on the releases of new versions;
- register your copy at any time you want – so you won't have to worry if you accidentally delete the program;
- download current versions of the registered programs;
- get in touch with our support team - your request will be processed with the highest priority;
- learn more about our products (get the demo-versions and learn how to purchase the product);
- get the notifications about releases of the new version of the program.

The details of the registration procedure and the E-Care system you can find at: http://www.penreader.com/company/e_care.html.

Knowledge Base

Support knowledge Base is available for our customers! You can find there detailed answers to all frequently asked questions about the most popular programs of Epocware/Paragon Software Group, including "SlovoEd" [multilingual dictionaries](#) for Symbian smartphones, [One for all Solitaires collection](#), [Handy Tools utilities](#), and others...

Visit our Support Knowledge Base before writing to our support team or while you are waiting for a reply from the customer support service. We suppose you will find there the necessary information on your problem.

Welcome to Support Knowledge Base!

<http://support.epocware.com>

Customer Support Service Tel: (+7 095) 789-67-17

NOTE

When calling from outside Russia, please consider the time shifts: Moscow is 11 hours ahead of San-Jose, 8 hours ahead of New York, 3 hours ahead of London, 2 hours ahead of Munich and Paris, 6 hours behind Tokyo.

Moscow office operation hours are from 11.30 till 19.00 by Moscow local time.

Appendix: Sound module. Installation and usage

Many dictionary databases used with "SlovoEd" dictionary engine have always provided phonetic transcription for the words. Now you can look at the translation and the transcription of a word, but also you can listen to it and improve your pronunciation (the words are spoken by professional native speakers).

With a dictionary you can use a Sound module, which contains the pronunciation of the words from the dictionary wordlist. Sound modules available for a specific language vary from maximally full versions to compact versions that contain only pronunciation of the most frequently used words.

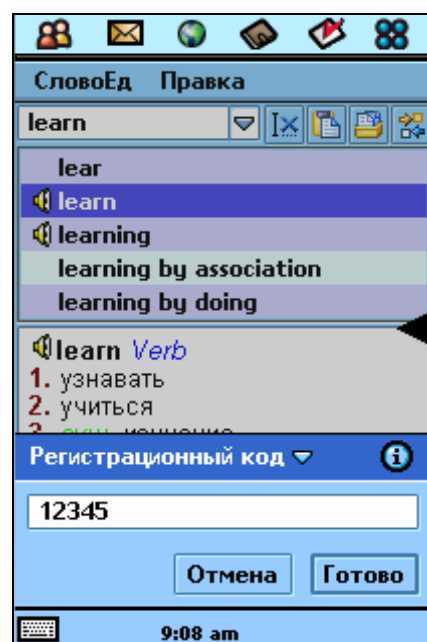
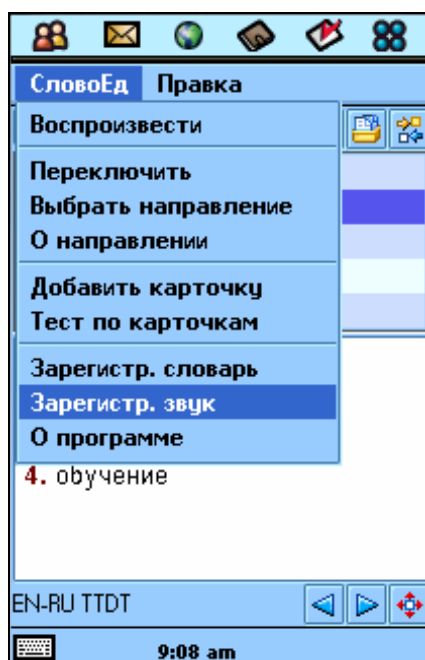
For the information about "SlovoEd" dictionaries for smartphones and available sound modules, please visit our site: <http://www.epocware.com/>.

Sound Module. Demo-version limitations and registration.

The more you use an unregistered sound module, the more often you hear a beep instead of the pronunciation. To be able to register the Sound Module you should purchase the registration code. To register the Sound Module select **SlovoEd > Register sound** and enter the registration code in the registration dialog.

Please, be accurate when you type in the registration code: do not mix up zero with letter O, you shouldn't enter any unnecessary spaces in the input line.

You receive the registration code for your dictionary after purchasing the software (the detailed info about how to obtain your registration code is available in the section: "**How to get the registration code**").



Sound module. Installation

You can install the Sound Module using 2 different ways: from an *.exe file (from the desktop computer only) or from a set of *.sis files (from the desktop computer or directly from the device).

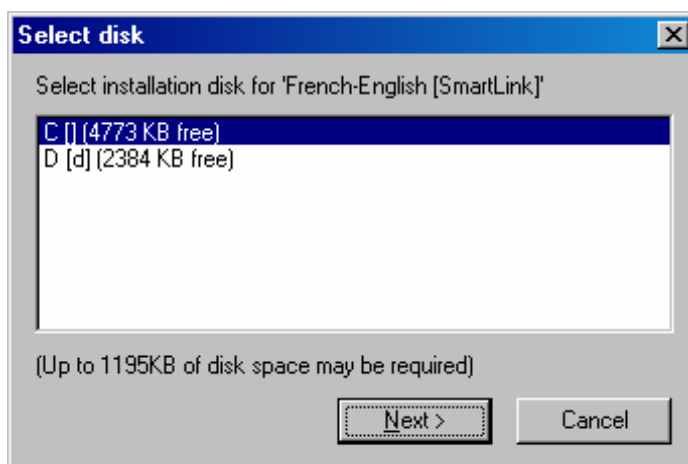
Installation from the *.sis file requires that in the main memory of your device there is 3 times as much free space as the volume of the file (no matter what is the source media). A single Sound Module *.sis installation file would require too much space, so we have split it up into several smaller *.sis files. Nevertheless, we recommend that you always use the *.exe file to avoid any difficulties.

Sound module. Installation from the desktop computer

To install the Sound Module, you should do the following:

1. Establish the connection between your UIQ smartphone and the desktop computer, using Bluetooth, Infrared port or a cable.
2. Run the installation *.exe file (recommended) – or each of the installation *.sis files one after another – and follow the instructions of the installation program.

3. A dialog where you can select the destination media will appear. Select disk C if you want the dictionary to be installed into the main memory, or disk D(E) if you want the application to be installed on an expansion card.



Sound module. Installation from the device


ATTENTION!

To install a program directly from your device, there should be 3 times as much free space in the main memory of the device as the program installation file takes.


To install the Sound Module from your device do the following:

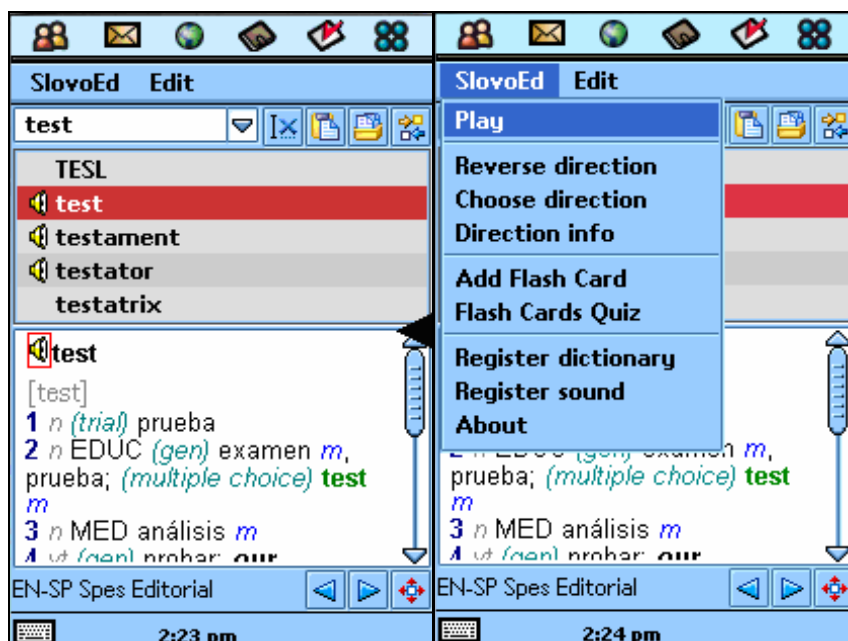
1. Copy the installation files (*.sis) to your device (using Bluetooth, Infrared or by some other method). Depending on a model of the device, you may need to run a special application to make the copying of the files possible. For example, if your smartphone is Motorola A1000, launch Motorola Desktop Suite before copying the *.sis files to the device.
2. Go to the applications window.
3. Open **Applications > Install**.
4. One by one select each of the installation files in the list of the *.sis files available for installation and tap **Install**.

Sound module. How to use it


After you install the sound module, in the wordlist a Sound icon  will appear near some words if their pronunciation is present in the sound module (it will be shown in the wordlist, in the title of the dictionary entry and in the Flash Card Quiz).

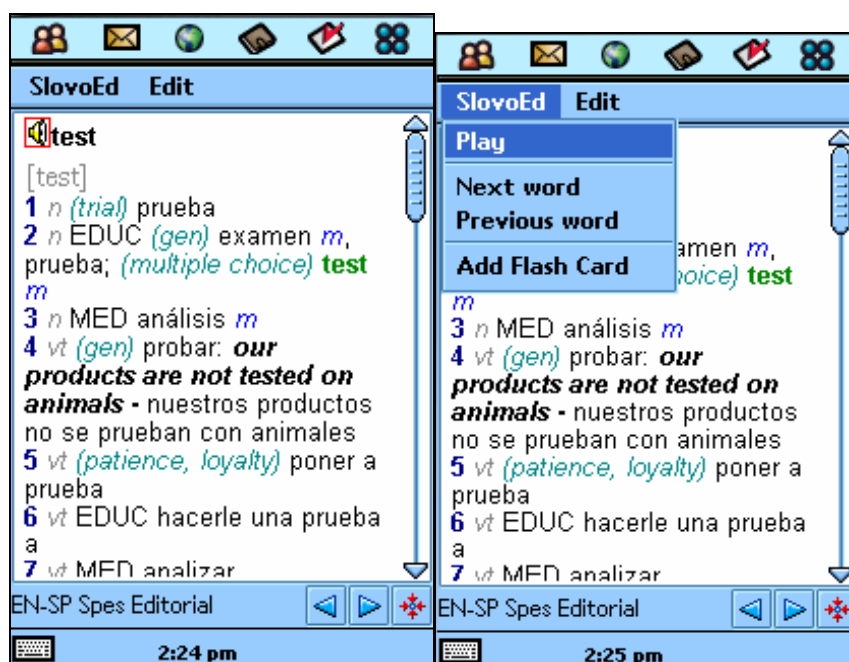
Sound in the main window

To listen to the word while you are in the main dictionary window, select the word in the wordlist and then select **Play** in the **SlovoEd** menu. You can also tap the  sound icon near the entry title to listen to its pronunciation.



Sound in the fullscreen mode

To listen to the word while you are viewing the dictionary entry in the fullscreen mode, tap the  sound icon or select **SlovoEd > Play** menu item.




Sound in the Flash Card Quiz

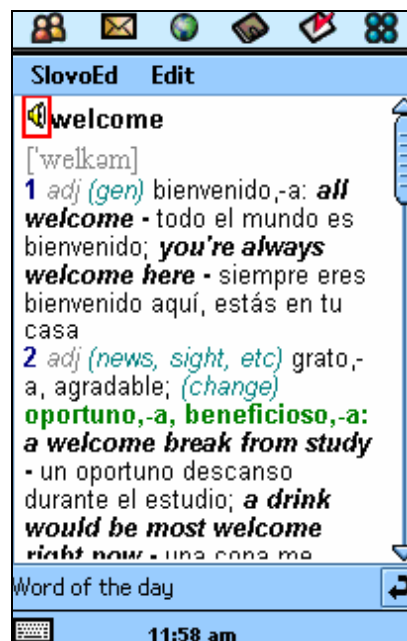
To listen to the word while taking a quiz, select **Play** in the **SlovoEd** menu.

If you want each word to be spoken automatically when it appears on the screen, select **Auto play** in the **SlovoEd** menu.



Sound in the Word of the Day

You can listen to the pronunciation of the Word of the Day if it is present in the Sound Module installed on your device. To listen to the word, tap the  sound icon near the dictionary entry title or select **Play** in the **SlovoEd** menu.



Sound Module. Uninstallation.

Open **Launcher** (for Motorola smartphones) or **Application** (for Sony Ericsson smartphones) from the programs window and select **Uninstall**. One by one delete the Sound Module files (select a file in the application list and tap select **Uninstall**). The names of the Sound Module files look like "English Standard1", "English Standard2", "English Standard3" etc.

The dictionary engine, the dictionary database and the sound modules should be uninstalled separately.

Dear customers!
Your reports and comments are highly appreciated.
They help us to improve our programs quality.
Thank you in advance for your reports.