

FileSearchPro User Guide

Contents:

- System Requirements.
- Installation.
- Using FileSearchPro.
- Contacting the developer.

1. System Requirements:

- 41 Kb's of free memory.
- Imagefix.sis is required for P900's only if the device's (Organizer) version is below "R3A "**included in the package**).

2. Installation:

a. from PC

Make sure that your P800/P900 is connected to your PC then run FileSearchPro.sis and follow the instructions.

b. from P800

Send FileSearchPro.sis to your P800/P900 via (Bluetooth, IR or using a file manager) and then run the file in your P800/P900 and follow the instructions.

3. Using FileSearchPro:

Using the menus:

File>Rename: is used to change the file name according to the specified name.

Note:

- Please select only one file in order to use the above function.

File>Size: is used to view the size of the selected file(s).

File>Copy: is used to copy the selected file(s) and you will be asked to specify the location to copy the file(s) to.

File>Move: is used to move the selected file(s) and you will be asked to specify the location to move the files to.

File>Delete: is used to delete the selected file(s).

File>Exit: is used to exit FileSearchPro.

Options>Clear list: is used to clear the Selection from the occurrences list.

Options>Select All: used to select all the matches in the occurrence list.

Options>Clear: used to clear the last edited text field (location or file name).

Options>Paste: used to paste the text that is present in the clipboard to the last edited text field (location or file name).

Options>Location Manager: will pop-up a window to manage the saved or most used locations with the following buttons:

- **Add:** adds the location to the list.
- **Remove:** removes the selected locations from the list.
- **Browse:** will pop-up a location selection dialog to quickly add a location.

Options>Properties: will pop-up a window to select the method to be used with the (Location) button.

Using the buttons:

Search: Used to start a searching session and the button will be changed to Stop.

Stop: to stop the currently running searching session.

Location: if (location manager) method is selected, it will pop-up a location selection dialog in which you are able to select one of the saved locations, and if the (File Browser) method is selected it will pop up a location selection dialog.

(Please refer to Options>Properties above).

Note: to search for files using their extensions please use this method (.mp3) and not (*.mp3).

Using the file selection dialog:

Please refer to the figure on the right while reading the next help tips:

(1) The current path.

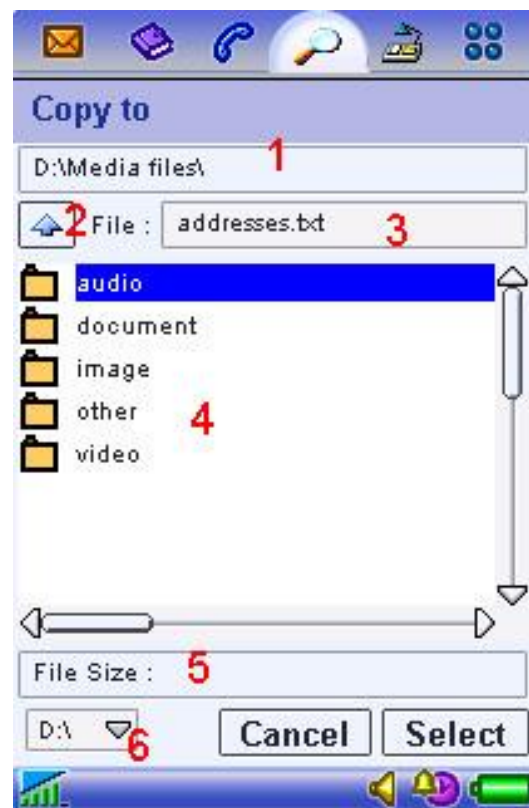
(2) Goes to the parent folder of the current path.

(3) The file name selected (this appears only if one file is copied/moved).

(4) The files/folders that exist in the current path.

(5) The file size of the selected file (the highlighted one).

(6) The root folder selected (C: for internal memory and D: for memory stick duo)



Note: Tap twice on any folder to open it.

4. Contacting the developer:

For comments and questions please contact the developer using the following e-mail:

info@develop.cjb.net

Please visit www.handango.com to purchase FileSearchPro.

Thank you for your attention

(DeVeLoPeR) Author of FileSearchPro ©
info@develop.cjb.net