

GrxView Pro Manual

GrxView Pro in a Nutshell

Overview

GrxView Pro is the full version of GrxView full-featured image viewer with additional support of TIFF and DjVu image formats.

GrxView Pro runs on a wide handheld range running Palm OS 5 or greater. Your device can have any screen resolution and orientation (160x160, 320x320, 320x480 portrait and landscape).

GrxView Pro supports more native image formats than any other Palm image viewer: JPEG (including progressive), GIF, PNG, BMP, PCX, TIFF and DjVu. GIF animation, multipage TIFF and DjVu are also supported.

GrxView Pro supports JPEG images saved on the handheld's memory (created by other image viewers like Palm Photos and SplashPhoto). Also GrxView Pro can store images to handheld's memory itself.

Minimum requirements for your handheld are: Palm OS 5 or greater, 700K free memory, color screen, memory card.

Installation

Download GrxView Pro **zip** or **sit** archive.

Unpack the archive and install program file (grxviewpro.prc) onto your Palm handheld using your palm installation tool, for example HotSync.

Unlike previous versions, all image format plug-ins are installed with the **prc** file. But you can delete unnecessary ones later by selecting Options->Plug-ins from GrxView Pro menu. For details see Plug-ins in GrxView Pro Reference.

Getting images to a handheld

Often you have some images on your desktop computer, but would also like to have them on your handheld computer. This section describes how you can copy images from desktop computer to handheld, if the handheld has an expansion card.

Expansion card is a small flash-memory card, which is inserted into the handheld's expansion slot. It can be Secure Digital Card, Multimedia Card or other - it depends on handheld's model.

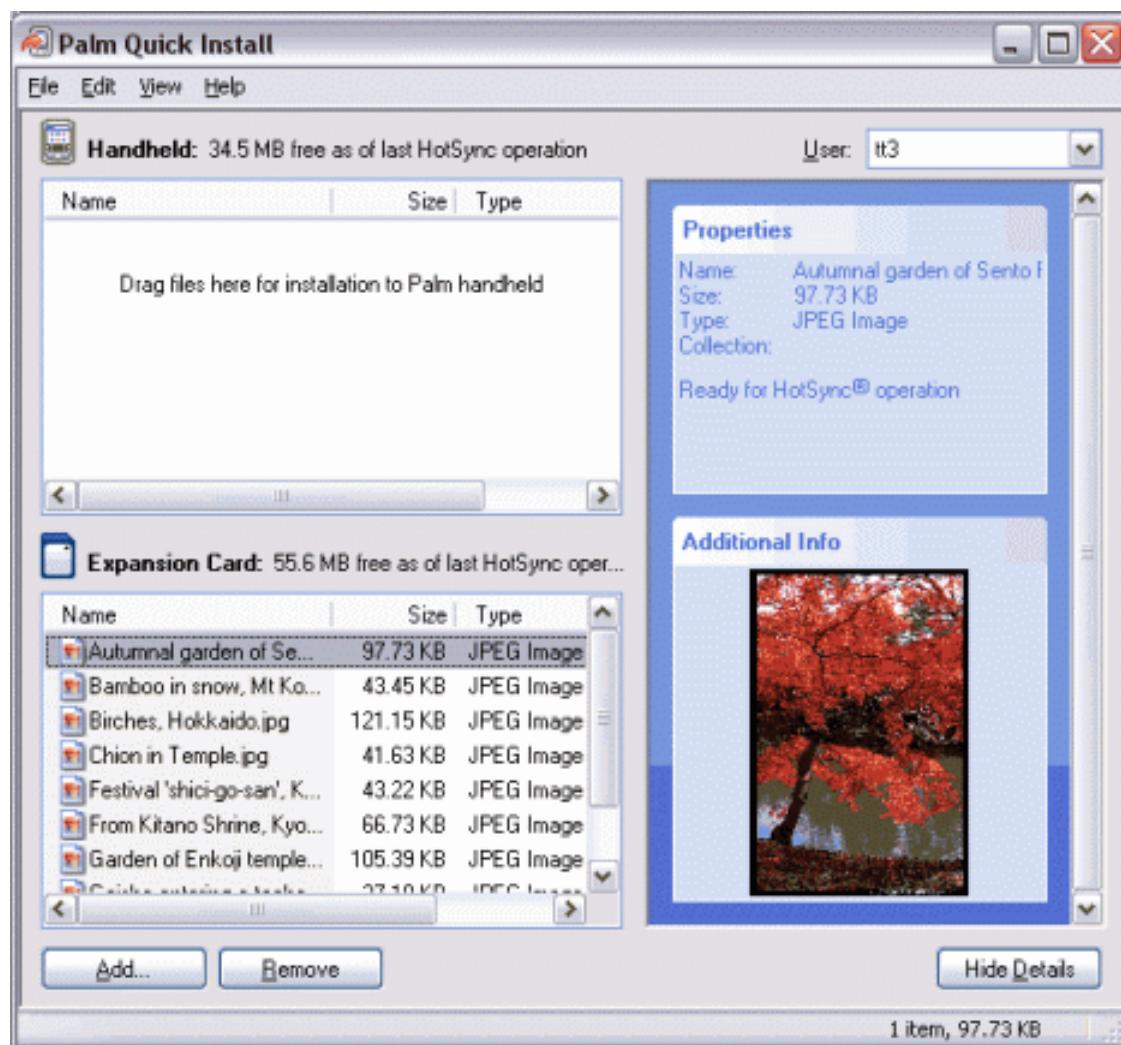
- **Using Palm Quick Install**

The easiest way to copy images from the desktop computer to the handheld's expansion card is using

synchronization software, like Palm Desktop or Palm Quick Install (this software is shipped with handheld itself on special Installation CD-ROM disk).

With Palm Quick Install you have just to drag&drop your images to Quick Install's window. Do not forget to choose correct destination: not **Handheld**, but **Expansion Card**.

After this put your handheld into the cradle and push the **HotSync** button. All images will be copied to the Expansion Card.



- **Using memory card reader**

Card reader is a small device, which can be connected to a desktop computer (or laptop) via USB or other communication cable. You can put your memory card into this device. For the operating system (Windows, for example) the card will be displayed as Removable Drive.

All you have to do is to copy your images onto this drive, then take the memory card out of the card reader and put it into your handheld's expansion slot. After this you can view your images on the handheld using GrxView Pro.

- **Card-mounting software**

If you neither have a flash card reader device, nor want to use standard synchronization software, you can go other way. There are few programs, which make it possible to mount the expansion card of the handheld directly to a desktop computer. In this case handheld's expansion card is displayed as new Removable Drive of your desktop computer. Afterwards you can copy your images on this disk the same way you do with a memory card reader.

For example, you can use Softick Card Export II to access SD/MMC card inserted into Palm OS device as a logical disk on the Windows desktop. Card Export II emulates USB Mass Storage device (like USB card reader, USB flash drives etc) and doesn't require any additional drivers on modern desktop systems. With Card Export II you can transfer Palm OS applications, images, mp3 files to the card or just use the memory card as a floppy for any data. After connecting card is accessible as another removable disk in Windows Explorer.

Working with GrxView Pro

GrxView Pro provides you very familiar interface to make it a fun using it.

- **Viewing images**

GrxView Pro can view a single image alone or a couple of images in a slideshow. Also you can view multipage TIFF or DjVu image's single page or a couple of the pages in a slideshow. For details see GrxView Pro Reference: Open Image and Slide Show correspondingly. Additionally you can assign open action to single, double or long tap (for details see File List View Options in GrxView Pro Reference). Also you can set slideshow options like delay, order, etc. (for details see GrxView Pro Reference, chapter Slide Show Options).

GrxView Pro provides popup toolbar for browsing open picture. It can zoom and rotate images and fit them to the screen. For details see Image View in GrxView Pro Reference.

Also you can set different viewing settings like auto zoom, background, etc. in Image View Options dialog window. For details see Image View Options in GrxView Pro Reference.

- **Browsing images**

With GrxView Pro you can rename or remove your image files, copy or move them to any folder including internal memory, create a new folder on the memory card. For details see Toolbar in GrxView Pro Reference.

Also you can browse multipage TIFF and DjVu images like folders. To explore files and folders easily you can set tap settings for this and other actions using File List Options dialog window. For details see GrxView Pro Reference, chapter File List View Options.

Additionally GrxView Pro provides multiselect option to perform with a couple of files simultaneously. For details see chapters File List and Multiselect in GrxView Pro Reference.

GrxView Pro has different view modes of browsing files and folders, including thumbnails (for details see GrxView Pro Reference, chapter File List). Also you can set the font for each of these modes (for details see

GrxView Pro Reference, chapter Font Options).

- **Transferring images**

GrxView Pro allows you to send or beam images to another device. For details see GrxView Pro Reference, chapters Send and Beam correspondingly.

- **Receiving images**

GrxView Pro features Exchange Manager support, which allows you to receive and view images from Bluetooth, IR connections and email attachments (tested with SnapperMail and VersaMail). For details see Exchange Options in GrxView Pro Reference.

To open email attachment from VersaMail tap on the yellow icon before the filename and select Open from popup menu. Then the list of available applications will appear with GrxView Pro in it.

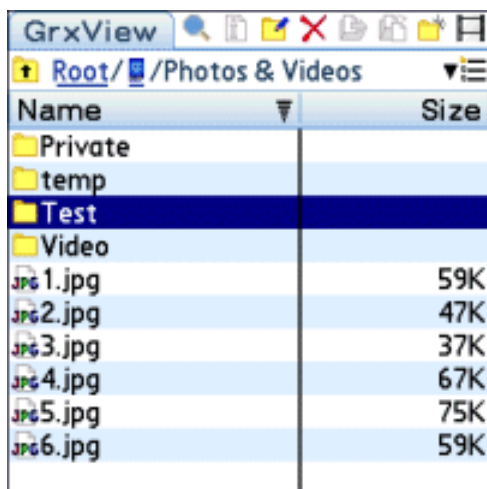
If this does not work (it happens sometimes) you can save image attachments on your memory card (using the same menu) and then opening them with GrxView Pro manually.

- **Image security**

GrxView Pro supports private images and global security options. For details see Security Options in GrxView Pro Reference.

GrxView Pro Reference

File List View



Name	Size
Private	
temp	
Test	
Video	
1.jpg	59K
2.jpg	47K
3.jpg	37K
4.jpg	67K
5.jpg	75K
6.jpg	59K

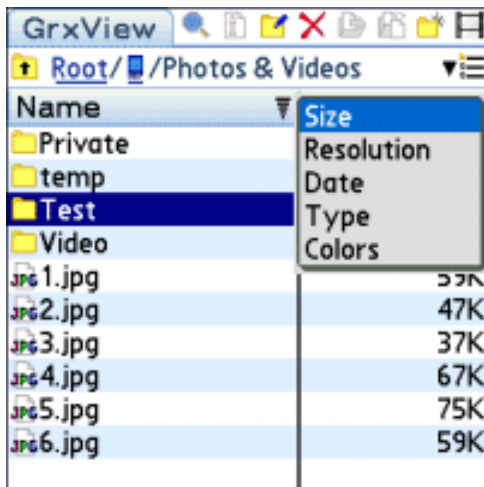
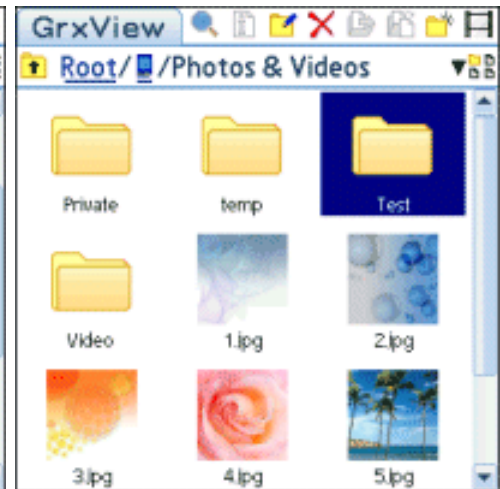
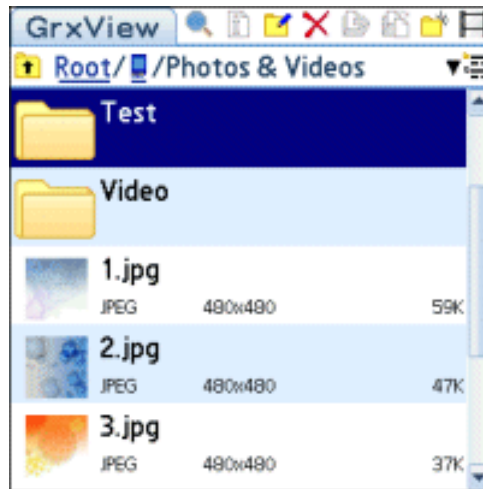
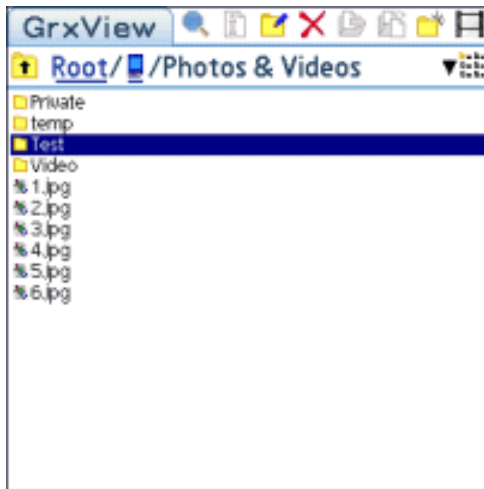
First thing you see when running GrxView Pro is File List View. Here you can browse your images on expansion card or internal memory.

File List View consists of File List, Toolbar, Path Indicator and Mode Selector.

Also there is the program header on top right corner of the screen. The header provides you a different way to open menu by clicking on it.

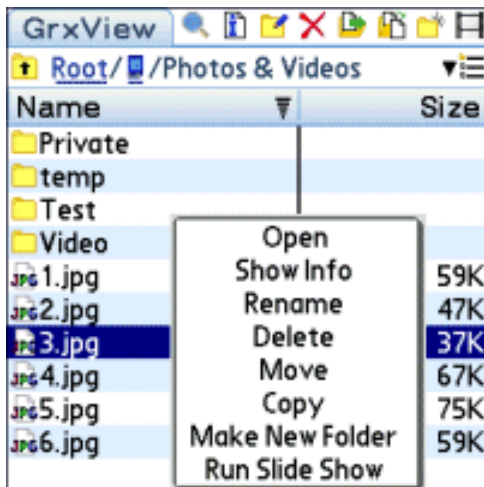
- **File List**

File List has four view modes: table mode (see picture above), list mode, details mode and thumbnail mode. You can select one of them using Mode Selector.

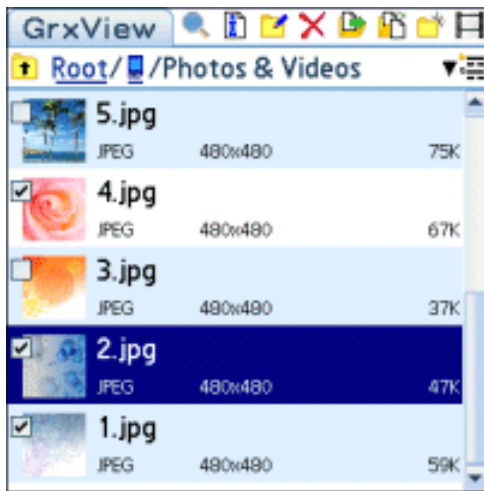


In table mode file list columns can be sorted — you can sort files either by name (left column) or by the value in right column, which can be size, resolution, date, type or colors. *Tap* once on the column header to change sorting order (ascending or descending), or to change sorting column.

To choose right column contents *long tap* (push your stylus and hold it for a while) on its header or use File List Options dialog window that can be accessed by Options->File List menu item. For details see File List Options.



Just *long tap* on the file or folder name in the list and you get a drop-down list of all the actions, accessible at the moment. You can assign another tap to open that list using File List Options dialog window.



Also you can operate with a couple of items simultaneously using multiselect option - just check wanted items.

Multiselect option can be turned on/off by selecting Options->Multiselect menu item.

• Toolbar

All the actions available for selected file or folder are shown on a toolbar.



All the icons are accessible regardless of File List view mode.

-  Open


This icon is active only if you have selected an item.

When you select a folder and tap on *Open*, the folder opens. When you select an image file and tap on *Open*, you see the picture.

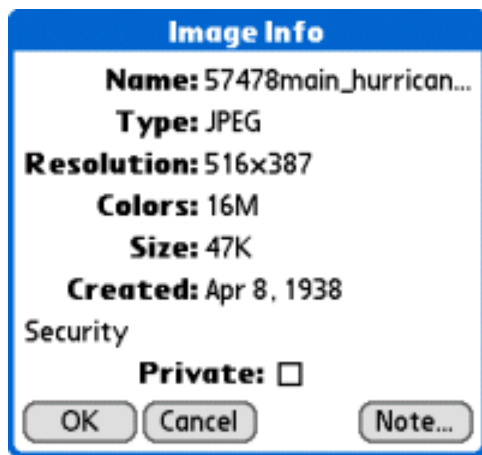
Also these actions can be performed by tapping on the file or folder name in File List. You can tune it in File List Options dialog window (menu *Options->File List*).

-  Image info

This icon is active only if you have selected an image file.

Image information gives a clue about different file and image parameters. Attach a note to an image using *Note* button and easily view it by tapping on  icon next to the file name in File List.

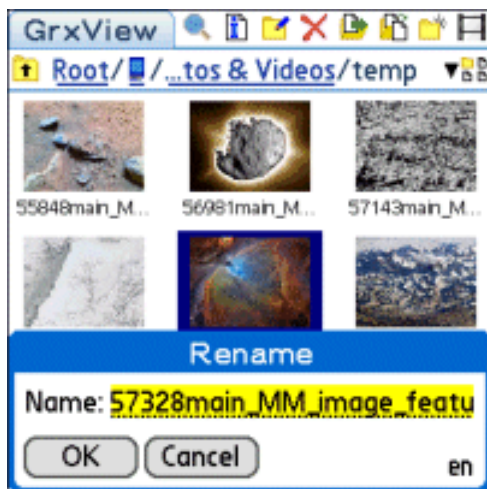
Also here you can check image as private. Security options (show, mask or hide private images) can be set in Change Security form (menu *Options->Security*).



-  Rename

This icon is active only if you have selected an item.

Use this command when you want to rename image file or folder.



-  Delete

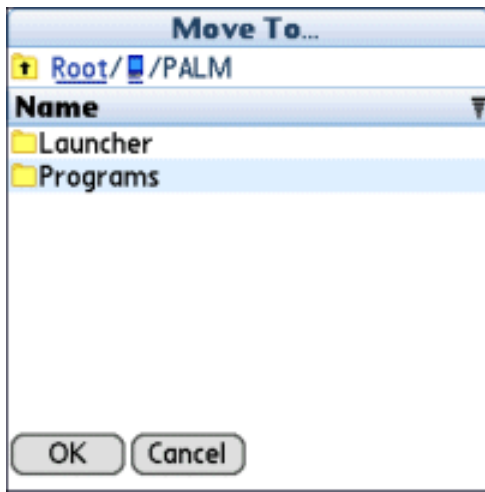
This icon is active only if you have selected an item.

Use this command when you want to delete image file or folder.

-  Move

This icon is active only if you have selected an image file.

Use this command when you want to move image file to another location. You can't move it to the same location.



-  Copy

This icon is active only if you have selected an image file.

Use this command when you want to copy image file to another location. You can't copy it to the same location.

-  New Folder

You can create a new folder, if you miss one.



-  Run Slide Show

If you have selected a file, this command shows all images in the current folder in full-screen mode, starting from the selected one. If selected item is a folder clicking on this icon shows all images in the folder.

To stop the slideshow just tap once on the picture.

You can enable/disable image auto-rotation mode and tune other Slide Show settings using Slide Show Options form (menu *Options->Slide Show*).

- **Path Indicator**


Path Indicator is located below the program header.





 Root//Photos & Videos

It includes *up* icon and the path to the open folder.


By clicking on *up* icon -  - you can go one folder up.

- **Mode Selector**

Mode Selector -  - allows you to select File List view mode. You can see it on the top right corner of File List View, right below Toolbar.

File List has four view modes and Mode Selector has icons for each of them: table mode () , list mode () , details mode () and thumbnail mode () .

Menu

There are two ways to get to the program's menu: first way is to tap the program header, second is to tap Menu button .

- **Image**

Image menu represents operations with images. You have to select an image before using them.

- **Open**

Use it to view selected image. Also it opens selected folder.

- **Send**

Use it to send image via Bluetooth.

- **Beam**

Use it to beam image via Infrared.

- **Options**

Options menu represents various parameters of GrxView Pro.

- **Multiselect**

Select it to turn on/off multiselect option. Multiselect option allows you to operate with a couple of images simultaneously (for details see File List).

- **File List Options**

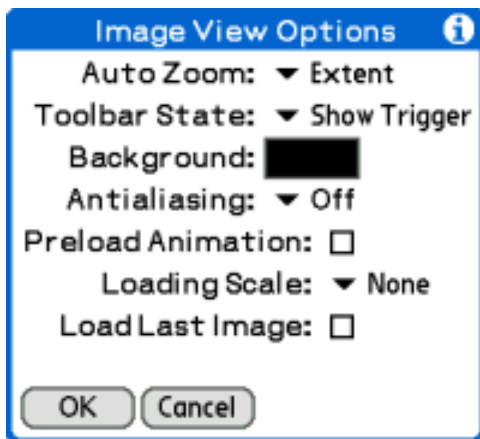


Here you can set value of the second File List column and tap settings to explore files and folders easily.

File List second column can show image size, resolution, date, type or colors number.

You can assign *Open* and *Menu* (opens the context menu) commands to single, double or long tap. You can do it separately for files and folders.

- **Image View Options**



These are the options of image view.

They include:

- **Auto Zoom**

When Auto Zoom value is set to *Extent* it means, that when you open an image it will be zoomed to fit the screen. If an image is smaller than the screen, the image is going to be enlarged. If an image is larger than the screen, the image will be shrunk.

Also Auto Zoom value can be *None* (no zoom), *W. Extent* (width extent), *H. Extent* (height

extent) or exact zoom value: *x0.25*, *x0.5*, *x2*.

- **Toolbar State**

Defines the initial state of image view toolbar. Select *Show All* to make the toolbar visible by default, *Hidden* or *Show Trigger* - to make it hidden by default (*Show Trigger* makes visible the toolbar trigger).

- **Background**

Defines Image View background color.

- **Antialiasing**

Enables or disables antialiasing of image zooming. *Off* disables antialiasing, *On For B\W* enables it only for black and white images, *On For All* enables it for all images.

- **Preload Animation**

Defines the way GIF animation is loaded. If it is checked all parts of an animated image are loaded at one time - before showing the first one (this makes show slower). Otherwise each part is loaded before showing it (this makes load slower).

- **Loading Scale**

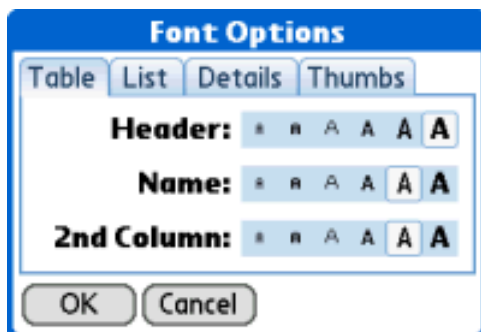
Defines the scale factor that will be applied when loading images.

Select *Extent* to improve performance. But in this way zooming the picture will not give you more details.

- **Load Last Image**

Check it to open the last image on program startup.

- **Font Options**



Here you can set font size for each of the File List view modes.

○ Slide Show Options



Slide show options include:

■ Delay

Defines how many seconds each image of slideshow will be shown.

■ Order

Defines an order of the slideshow. You can choose sequential or random order.

■ Show Progress

Defines the way image loading progress bar display.

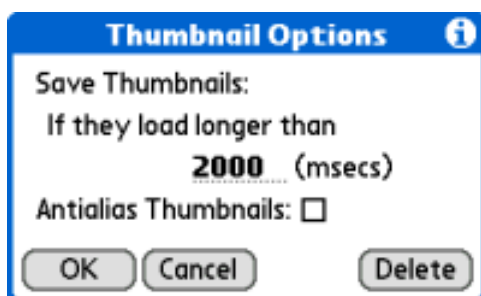
■ Auto-Rotate

Defines auto-rotation of images during slide show (for non-square screen devices). Set *Right* to rotate wide (vertical screen) or narrow (horizontal screen) images clockwise; set *Left* to rotate them counter-clockwise.

■ Cycle Images

Check it to make slide show cyclic.

○ Thumbnail Options

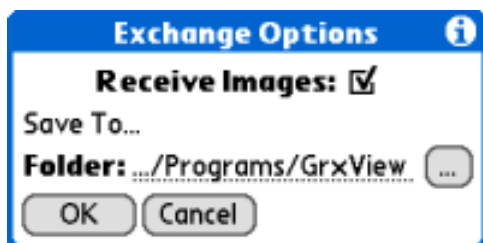


Thumbnails are saved if they load longer than user defined time. Here you can change this limit time.

Also you can check to enable antialiasing for thumbnails.

Delete button deletes all saved thumbnails.

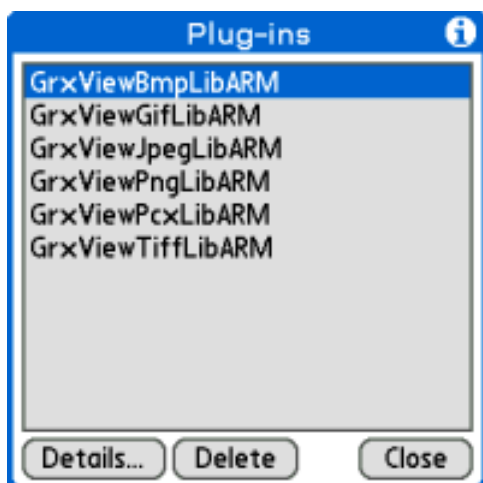
- **Exchange Options**



Here you can allow GrxView Pro to be a default receiver for all types it supports.

When you check *Receive Images* checkbox all images received via Infrared, Bluetooth or from other applications will be saved in the specified folder. You can set it in *Folder* path selector using "..." button.

- **Plug-ins**



Plug-ins dialog represents a list of all GrxView Pro plug-ins installed. Each plug-in is intended to handle one image file format.

You can remove plug-ins you do not need using *Delete* button.

For plug-ins details push *Details* button.

- **Security Options**



Sets standard privacy record option.

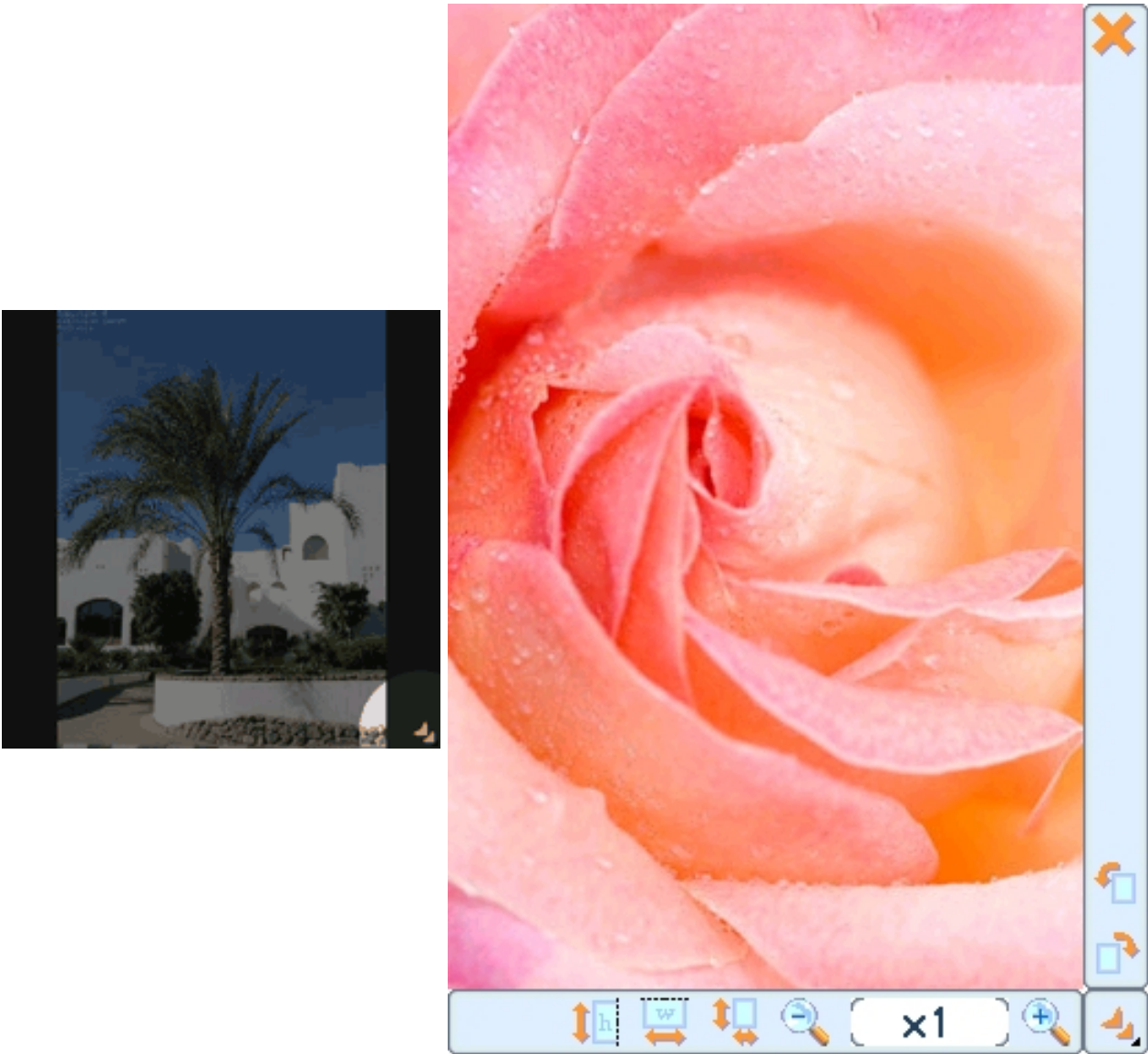
Image View

Unlike the File View, in Image View you can actually *see* image.

You can jump to the next or previous image in current folder using 5-Way Navigator (buttons *Down* and *Up* correspondingly) or Jog Dial.

Little red sign - toolbar trigger - in the down-right corner of the screen un-hides several useful options - just tap it. Also you can make these options available by default using Image View Options dialog window (menu *Options->Image View*).

If toolbar is shown you can scroll the image - tap on it and drag.



-  Close

Close the image and return to File List View.

-  Hide

Hide the toolbar.

-  Rotate left

Rotate image 90 degrees counter-clockwise.

-  Rotate right

Rotate image 90 degrees clockwise.

-  Fit height

Fit image height to screen height. If image is longer than the screen, the image will be shrunk. If screen's height is greater than height of the image, the image will be enlarged.

-  Fit width

Fit image width to screen width. If image is wider than the screen, the image will be shrunk. If screen's width is greater than width of the image, the image will be enlarged.

-  Fit width & height

This tool makes image of the maximum size, when it still fits the screen both by the width and by the height.

-  Zoom in

Increase image zoom factor.

-  Zoom out

Decrease image zoom factor.

-  Zoom factor

Zoom factor shows current image scale. You can change it by tapping on the digits. Then you can choose a value from the drop-down list or select *Custom* to set custom scale.