



MP3Go

MP3Go for Nokia Series 60 (Symbian 7.0)

Quick Start Guide

Document
Version 3.00



empowering@mobile.internet

Warning: You should only install software that coincides with your phone language version. **The installation and use of any other language version software not coinciding with your phone's language version may bring about unexpected results.** Failure to adhere is at your sole risk. We and/or phone manufacturer disclaims any liability whatsoever for non-compliance with this warning.

1 Introduction

MP3Go for Nokia Series 60 (Symbian 7.0) is a MP3 music player running on Nokia Series 60 phone of Symbian 7.0, so you can play MP3 songs stored in the main memory or MMC/RS-MMC memory card (recommended).

Features:

- Support MPEG-1 layer 3 file in 24k/32k/64k/128k/256k/320k bitrate
- Smart interface: manage all functions using simply the joystick button
- File Manager like user interface, let you select any MP3 songs from memory card
- Listen using hand-free mode, headset
- Pause and resume songs when incoming voice calls or making external voice calls arrive
- Basic controls: Play, Pause, Stop, Next song/Previous song
- Additional controls: Time slider, Volume slider, Playlist, Random/Repeat Play
- Displaying song information: Album name, Artist Name, Title, Bitrate, Sample rate, Duration
- Support Playlist .m3u which is compatible to NullSoft WinAmp, Microsoft Media Player format
- Create, load and save Playlists
- Add or Remove a song from the Playlist
- Auto-save recently-used Playlist

2 System Requirements

- Nokia Series 60 phone running Symbian 7.0, requires at least 630k storage and 500k free main memory to run

The following phones are supported by MP3Go for Nokia Series 60 (Symbian 7.0):

- Nokia 6600/6620
- Nokia 7610/6260/6670

For other Symbian 7.0 phones not listed above, you can always send email to info@m-internet.com for enquiry.

- MMC/RS-MMC memory card (optional but recommended)
- A PC desktop with PC Suite for Nokia phone installed (Optional)
- IR/Bluetooth between your PC and the Nokia phone (depends on phone model)

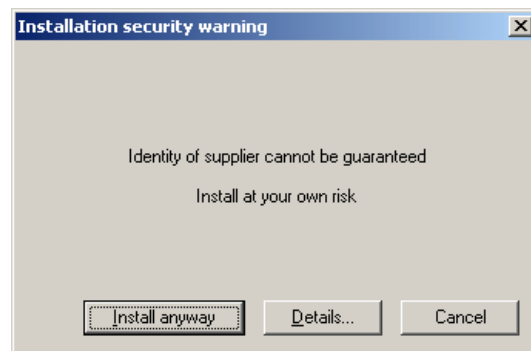
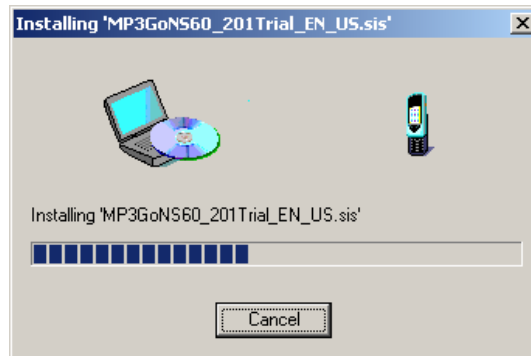
Note: MP3Go for Nokia Series 60 (Symbian 7.0) is not compatible on Nokia Series 60 (Symbian 6.1) phones. For Symbian 6.1 phone please get MP3Go for Nokia Series 60 (Symbian 6.1)

You can visit <http://m-internet.com/MP3Go> for further information.

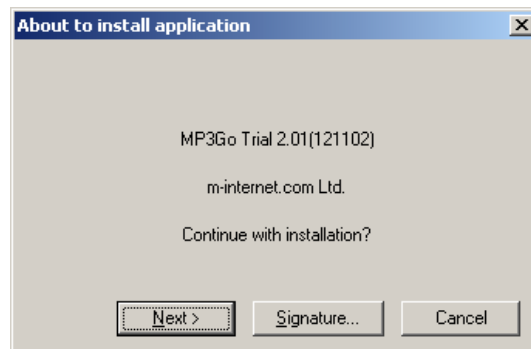
3 Installation

3.1 Using PC Suite for Nokia phones

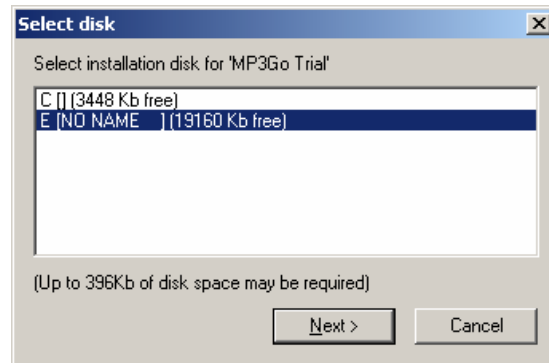
- a) Download the file **MP3GoNS60_OS70_301Trial_EN.sis** to your desktop PC
- b) Connect your Nokia phone to the PC using Infra-Red/Bluetooth (refer to your phone manual, some phones has built-in Bluetooth connectivity only)
- c) Start PC Suite for Nokia phone
- d) Click on "Tools -> Install device software" and select the downloaded file **MP3GoNS60_OS70_301Trial_EN.sis**. Click "Open" and the following screen will pop up to start the installation



- e) When you see the above screen, just click "Install anyway" to continue the installation
- f) The following screen will pop up. Click "Next>" to continue



- g) You will see another "Select disk" screen, if you have MMC/RS-MMC memory card installed, the drive E will be shown, or drive C only in your phone without memory card inserted. It is recommended to choose MMC/RS-MMC (Drive E) to install the software to save main memory space.



- h) Then you will see another "Please read..." screen which displays the license agreement for you to read. You can either click "Yes" to accept it and proceed with the installation OR click "No" to abort the installation

3.2 Using Infra-Red/Bluetooth Connection

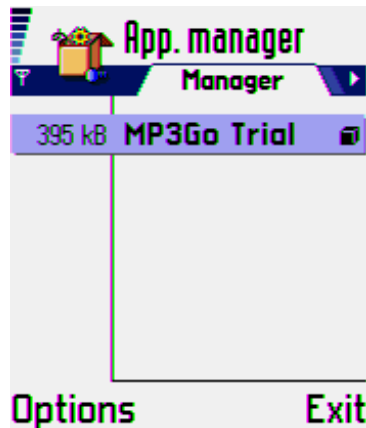
Alternatively, you can directly "beam" the **MP3GoNS60_OS70_301Trial_EN.sis** to your Nokia phone via Infra-Red or Bluetooth. It will be stored as a New Message in the inbox of your Nokia phone.



Open the New Message and the installation will start automatically. During the installation, you will be prompted to read the license agreement. You can choose to accept it and proceed with the installation OR reject it to abort the installation.

4 Removing *MP3Go*

Once installed, an entry called "**MP3Go Trial**" will be listed in the Applications Manager program under the "Tools" folder. Select this entry and use "Options->Remove" to remove the **MP3Go** trial application.




5 Starting *MP3Go*

5.1 Running *MP3Go*

Press the Application Launch icon



In the Application menu, navigate to the icon  and press joystick button to start **MP3Go**.




5.2 Playing MP3 songs

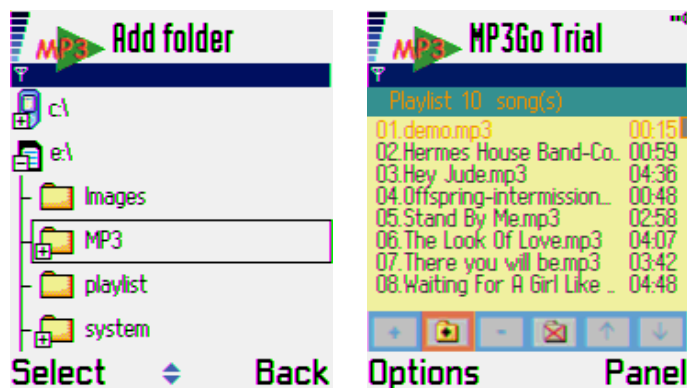
Before you can play MP3 songs, you have to create a Playlist first.

A Playlist is a customized list of MP3 files in a preferred order, that you want to listen to. You can save a playlist and load it later.

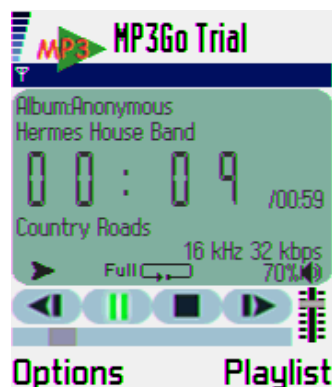
A demo song called DEMO.MP3 and a default playlist with this song is automatically created for demonstration during installation.

After installation, the quick steps to play songs:

- start **MP3Go**
- press right soft-key “Playlist” to switch to Playlist view
- highlight the “Add Folder” icon  (left second icon)
- select the folder containing MP3 files, the MP3 songs under the folder will be added into the playlist



- press the right soft-key “Panel” again to switch to Panel view
- navigate the joystick to the “Play” icon (the cursor becomes green color) and press “Play” icon to play the song. You can adjust the volume level by highlighting the volume bar.

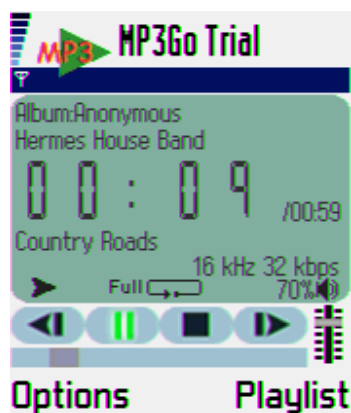


5.3 *Panel view and Playlist view*

A Panel view is the visual display just like a Hi-Fi panel showing current playing song information of duration, volume level, plus MP3 information like Bitrate, Album name, title name, etc.

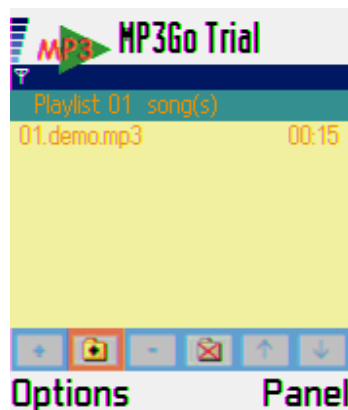
In Panel view, you can use the joystick to control the volume level, play/pause/stop, previous/next song, or play the song in a specific position.

During startup, **MP3Go** is in Panel view by default.




User can press the right soft-key “**Playlist**” to switch from Panel view to Playlist view.

In Playlist view, you can add/remove song(s), add all songs in one folder, clear all songs, or arrange the order of each song in your playlist.



5.4 Easy mode and Full mode

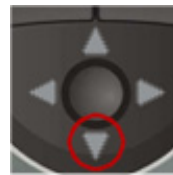
There are two modes to manage controls in Panel view: Easy and Full mode. Easy mode is for quick controls and requires fewer steps to adjust volume, play/pause/stop, playback/advance song, and review/forward. On the other hand, full mode is to use the joystick to control the behavior instead.

You can press “#” key  to toggle these two modes.

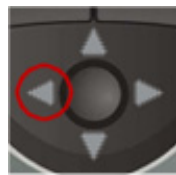
In Easy mode:



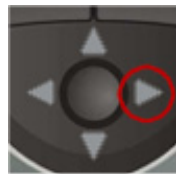
- Increase volume level



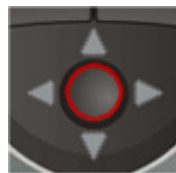
- Decrease volume level



- Click once to PLAY PREVIOUS SONG/press continuously to REWIND SONG in small interval



- Click once to PLAY NEXT SONG/press continuously to FORWARD SONG in small interval

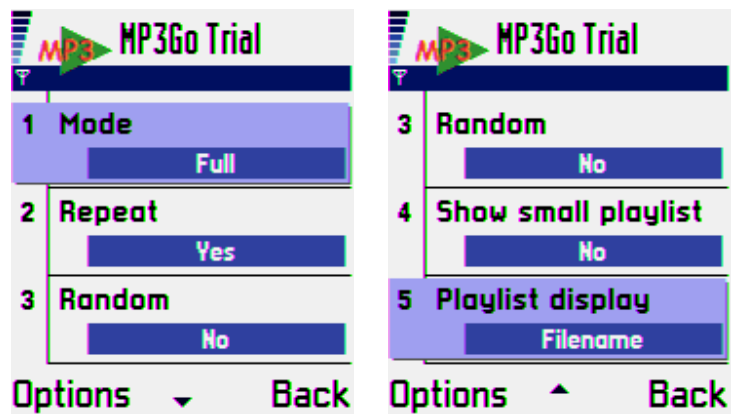


- Click once to PLAY/PAUSE, press continuously to STOP

In Full mode, move the green cursor on specific controls and press joystick to take the specific action

5.5 Settings

Settings can be changed by pressing left soft-key in either Panel view or Playlist:



Mode (Full/Easy): see Section 5.4

Repeat (Yes/No): Repeat playing the playlist

Random (Yes/No): Random to select song from the playlist

Show small playlist (Yes/No): show a small playlist on the top of the Panel view (3 songs only)

Playlist display (Song name/Filename): Showing song name or the filename of the song in playlist and panel

6 Contact, Support and Questions

Please regularly visit website <http://m-internet.com> for further update.

Email Enquiry:

General Information:	info@m-internet.com
Support:	support@m-internet.com
Sales:	sales@m-internet.com

7 Copyright

Other products may be trademarks or registered trademarks of their respective manufacturers.

(c) 2002-2004 m-internet.com Limited. All rights reserved.

m-internet.com Ltd. operates a policy of continuous improvement. Therefore we reserve the right to make changes and improvements to any of the products described in this guide without prior notice.

m-internet.com Ltd. is not responsible for any loss of data, outcome or any consequential damage howsoever caused.