



Copyright © 2002-2005 Epocware / Paragon Software Group
Dolgoprudny, Moscow region, Russia

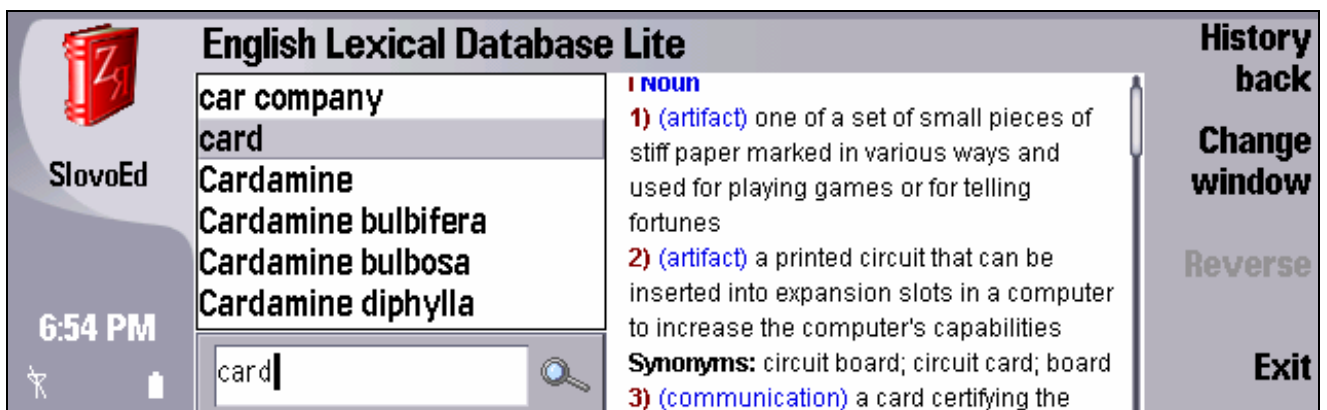
Multi-language dictionary “SlovoEd” for NOKIA 9500 Communicator

GENERAL INFORMATION	2
REGISTRATION AND DEMO VERSION LIMITATIONS	3
INSTALLATION	3
DIRECT INSTALLATION FROM THE DEVICE	3
INSTALLATION FROM YOUR DESKTOP COMPUTER	3
SEVERAL DICTIONARIES INSTALLATION	4
USING “SLOVOED”	5
ELEMENTS OF THE DICTIONARY INTERFACE	5
DICTIONARY MENU	5
SEARCH OF WORDS IN THE DICTIONARY	8
HOTKEYS FOR QUICK MANIPULATION WITH THE DICTIONARY	10
CUSTOMER SUPPORT SERVICE	11
HOW TO GET THE SERIAL NUMBER FOR “SLOVOED” DICTIONARY	11

General information

The “SlovoEd” program is a multilingual dictionary for **NOKIA 9500 Communicator** devices. Advantages of the program are:

- Great number of word entries;
- Low memory consumption;
- The possibility to select one of six interface languages;
- The possibility to install several language pairs simultaneously;
- Color formatting of word entries;



- History saving (last words that you searched), you can see any word from the history again at any time;
- Transcription support;
- The possibility to install “SlovoEd” to expansion cards;

Some language versions of the “SlovoEd” dictionary are available in several editions: **compact**, **extended**, **unilateral** and other. You can choose any, in accordance with your needs and device memory limitations.

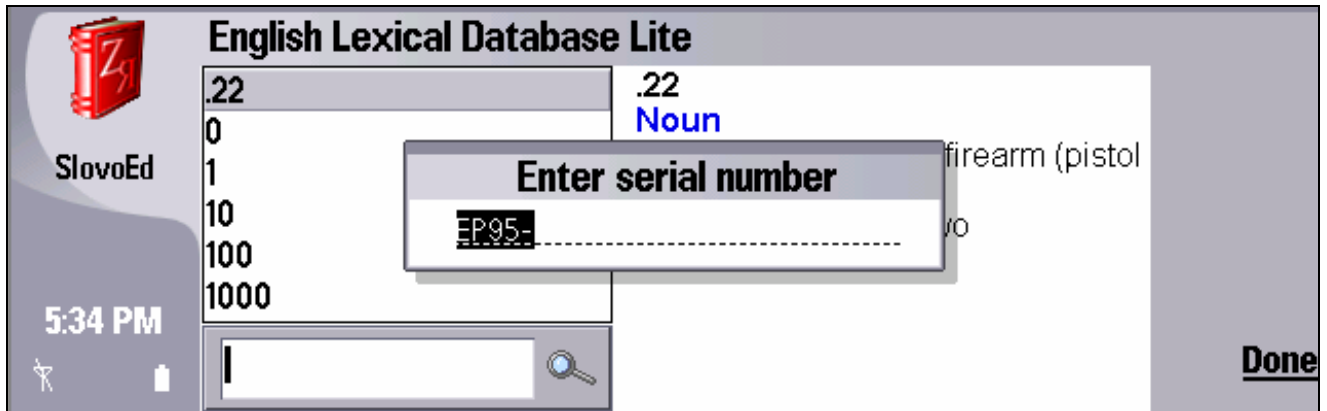
You can choose any of six “SlovoEd” interface languages: English, German, French, Italian, Spanish and Russian.

High data compression ratio for dictionaries with a high access rate is available due to the special technology developed by **Epocware / Paragon Software Group** (<http://www.epocware.com>).

The Full list of the dictionaries databases is available at <http://www.epocware.com>.

Registration and demo version limitations

The more you use an unregistered dictionary, the more you see a message about its registration procedure. To register your copy of the dictionary, enter your serial number in the dialog box **Menu/Dictionary/Register**:



You receive the serial number for your dictionary registration after purchasing the software (the detailed info about how to obtain your serial number is available in the correspond section ([“How to get the serial number for “SlovoEd” dictionary”](#))).

Installation

Note!

- *Don't forget to perform backup of all your data before installation of new programs (including “SlovoEd”)! It will help you to avoid casual data loss.*
- *In order to choose “SlovoEd” interface language during the installation, set the option “default installation language” (**Tools/Control panel/Data management/Application manager/Preferences/Preferred language**) to a meaning, different from English.*

There are two ways of the dictionary installation - from your desktop computer using the PC Suite software and directly from your device:

Direct installation from the device

- Copy the installation sis file from the desktop computer to any folder of your communicator;
- Start the installation sis file on your device;
- Follow the instructions of the installation program.

Installation from your desktop computer

To install your dictionary from your desktop computer you should do following:

- Connect your **NOKIA** device with the desktop computer using the PC Suite program;

- Start the installation file on your desktop computer;
- Follow the instructions of the installation program.

After the installation is finished, the **“SlovoEd”** icon will appear in the Applications list.



Several dictionaries installation

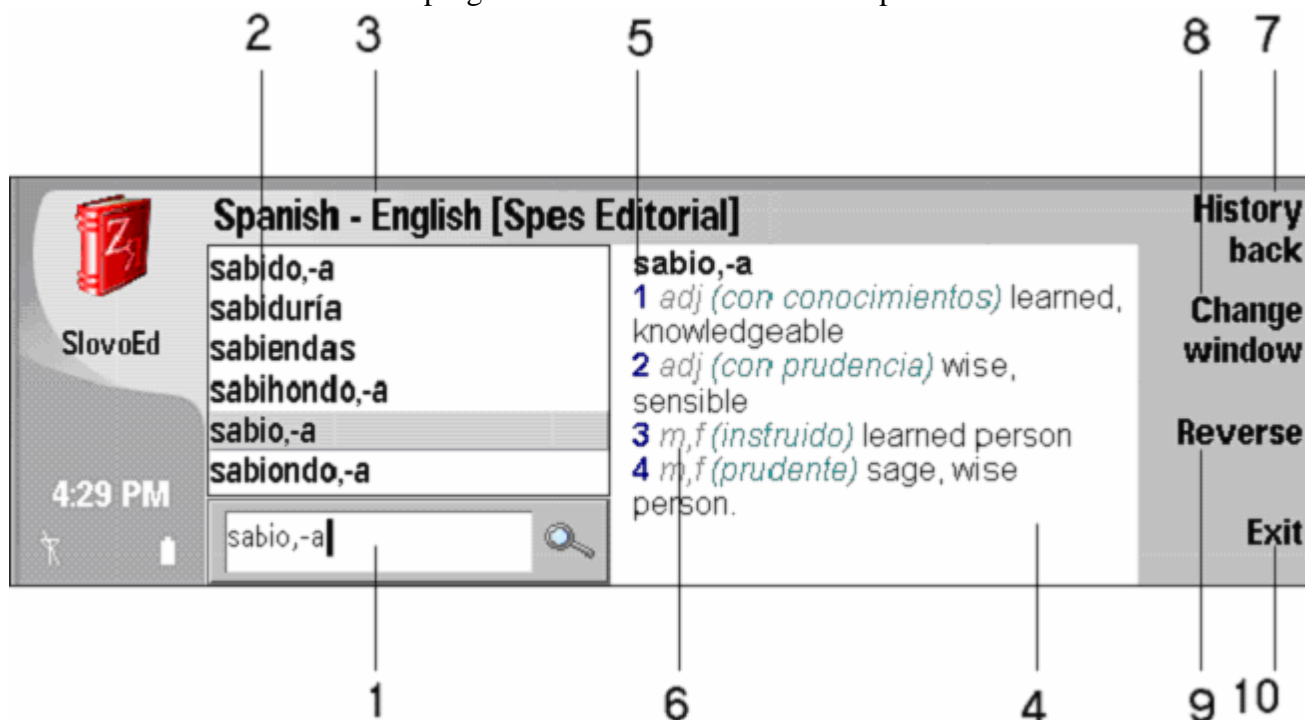
You have the possibility to install the **“SlovoEd”** program with several dictionary databases simultaneously. To do that you should start the installation files of every dictionary one after another and install them.

Thus you will be able to use several dictionaries simultaneously and change the dictionaries through the menu item **Dictionary/Choose dictionary...**

Using “SlovoEd”

Elements of the dictionary interface

The elements of the “SlovoEd” program interface are shown in the picture below:

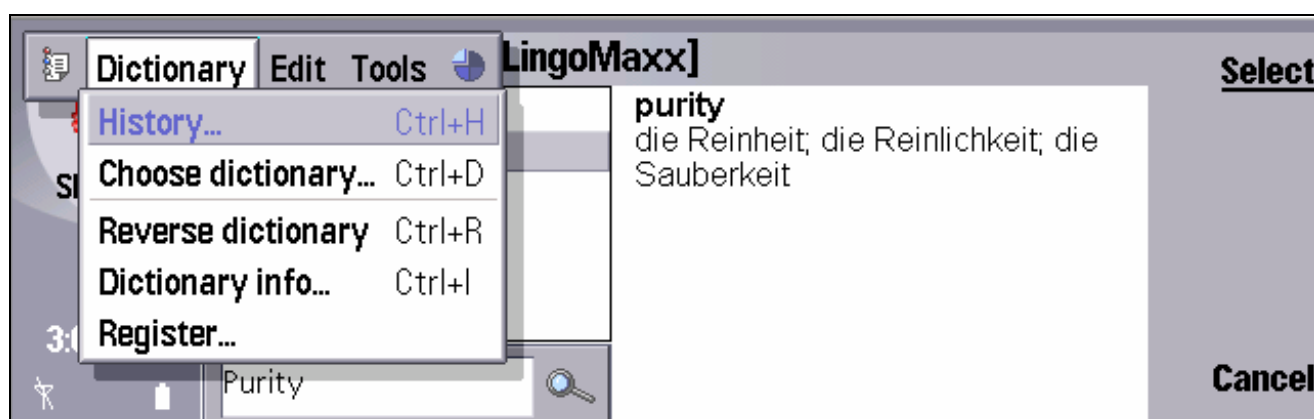


The elements of the program interface have the following values:

1. Entry field;
2. List of words available in the dictionary;
3. The active dictionary title;
4. Translation field;
5. Found word;
6. Translation of the word entry. All the meanings of the translation are numbered and may contain some extra information;
7. The **History back** button for quick return to the word entry that you looked up earlier;
8. The **Change window** button for changing the active window;
9. The **Reverse** button for switching the dictionary to the pair dictionary;
10. The **Exit** button.

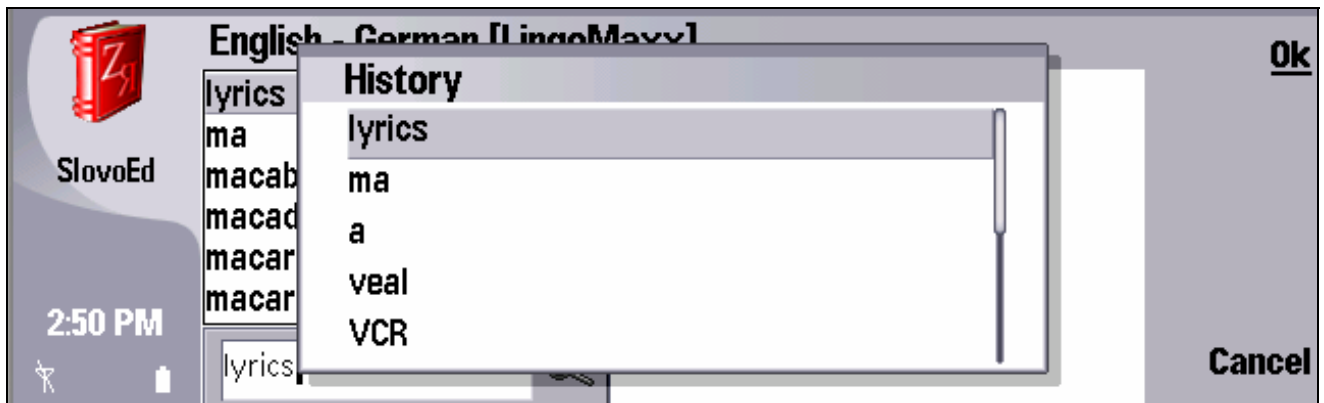
Dictionary menu

The “SlovoEd” menu includes three sections: **Dictionary**, **Edit**, **Tools**:

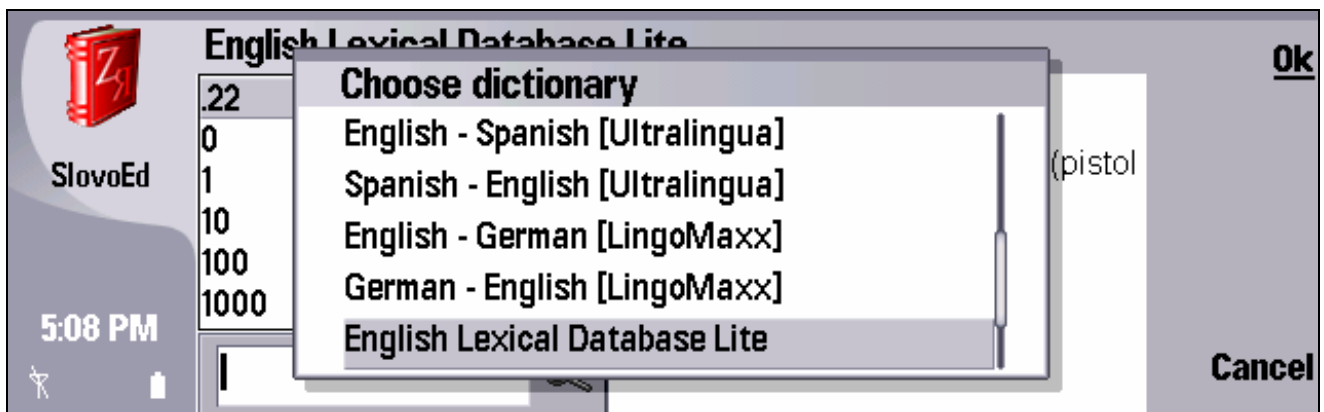


The **Dictionary** section includes the following items:

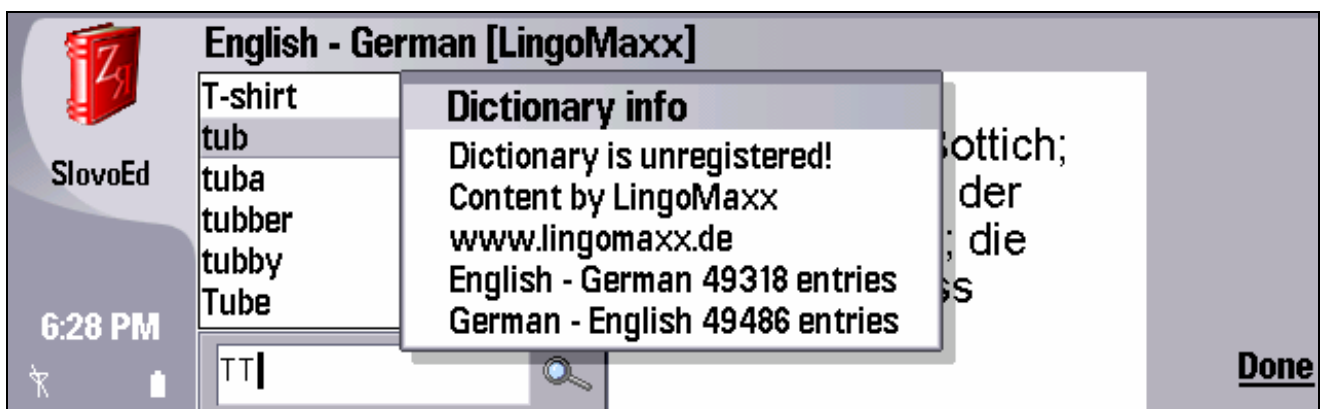
- The menu item **History** allows you to look up 10 last word entries, that you searched before and select one if necessary;



- The menu item **Choose dictionary** allows you to select one of the installed dictionaries;

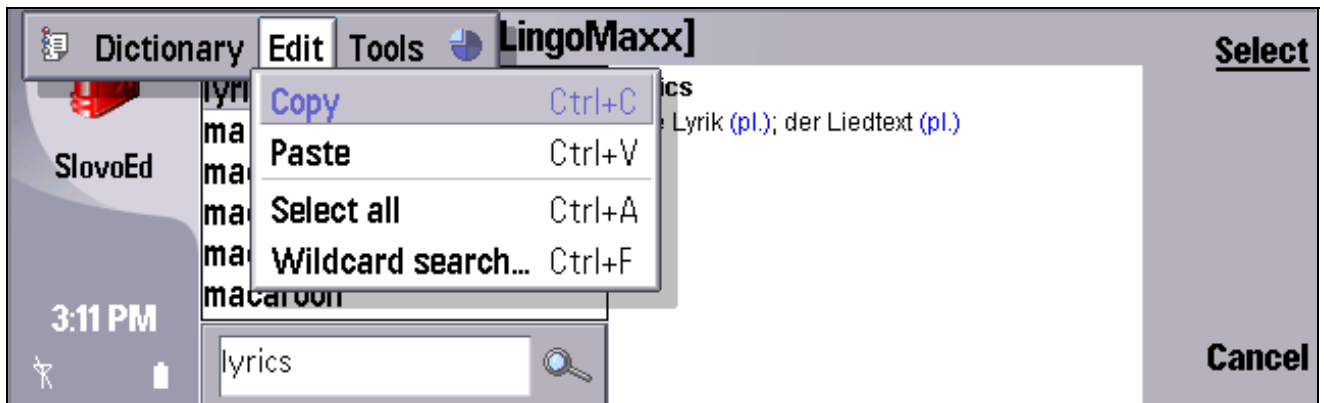


- The menu item **Reverse dictionary** allows you to switch the dictionary to the pair dictionary;
- The menu item **Dictionary info** allows you to get the information about the active dictionary:

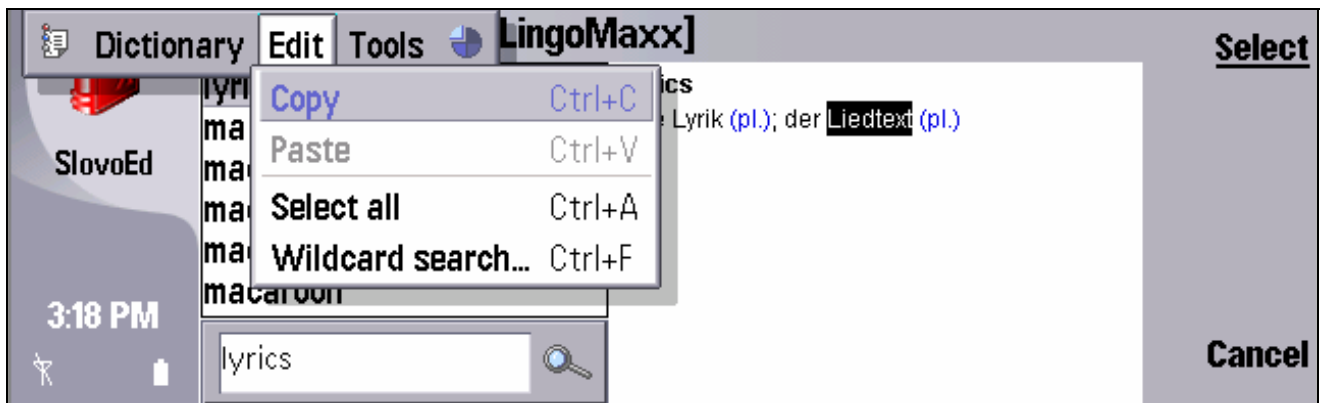


- The menu item **Register** allows registering the current dictionary. More detailed information about dictionary registration is available in the section [“Registration and demo version limitations”](#).

The **Edit** section contains the following items:

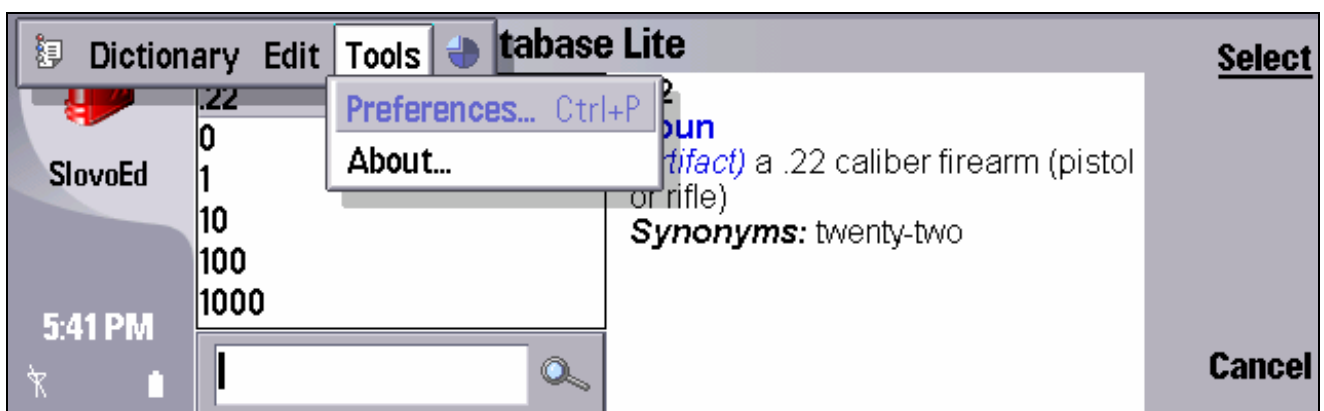


- The menu item **Copy** allows you to copy the text selected in the active window into Clipboard:

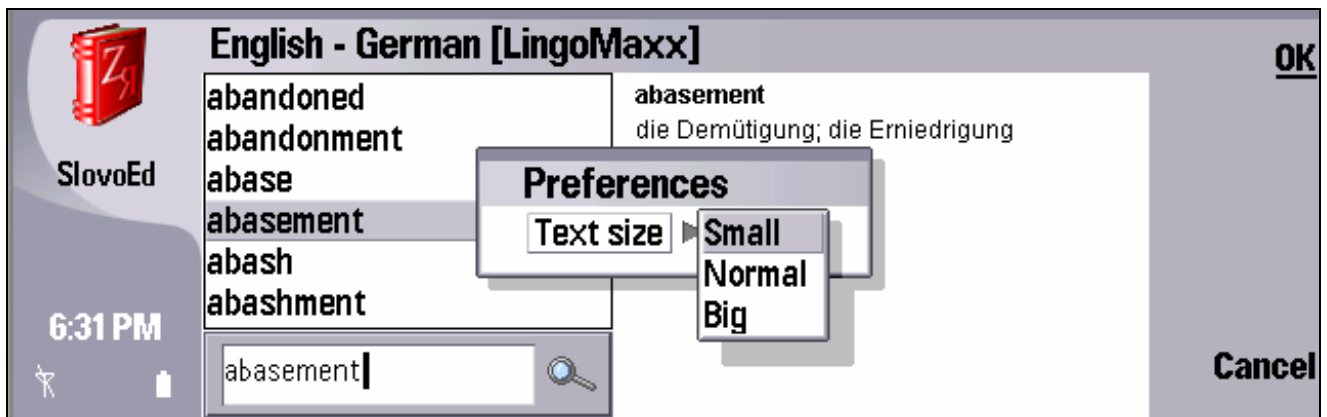


- The menu item **Paste** allows you to insert text from the clipboard into the edit field;
- The menu item **Select all** allows you to select the whole contents of the active window (for the following copying, for example);
- The menu item **Wildcard search**. The detailed information about this function you can find in the section [“Search of words in the dictionary”](#).

The **Tools** section contains the following items:



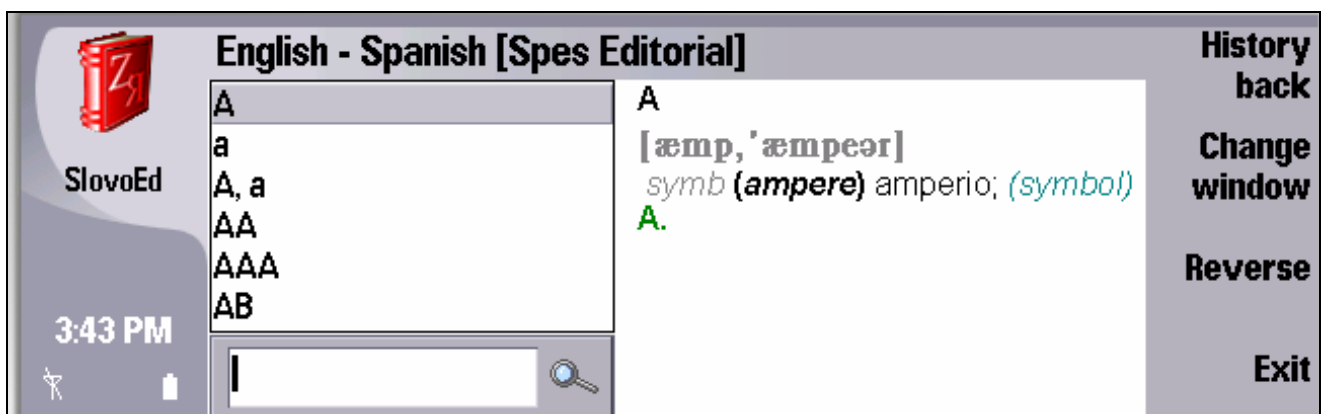
- The menu item **Preferences/Text size** allows you to change the text size in the translation field:



- The menu item **About** allows you to get the information about the current dictionary version and the “SlovoEd” developers.

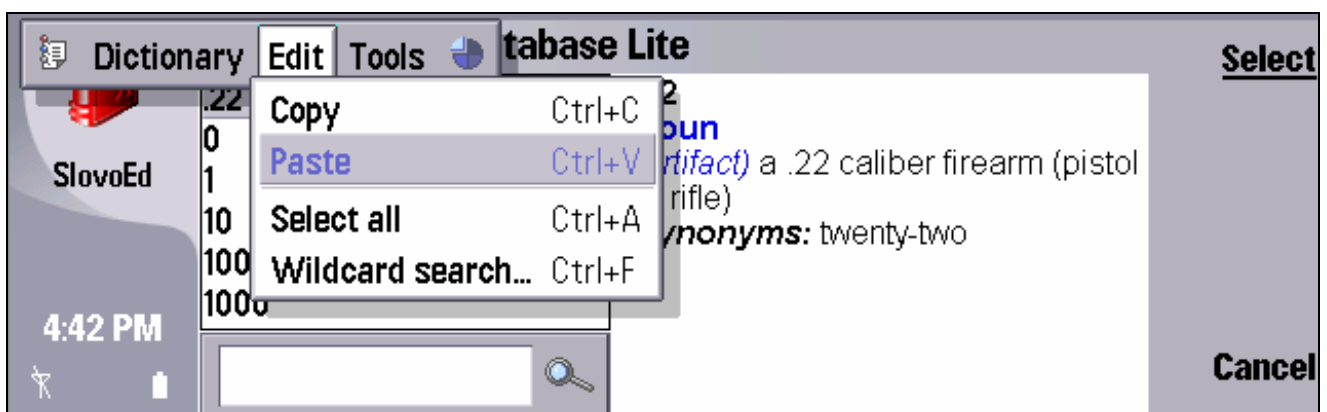
Search of words in the dictionary

After starting the dictionary, the screen of your device will appear as follows:

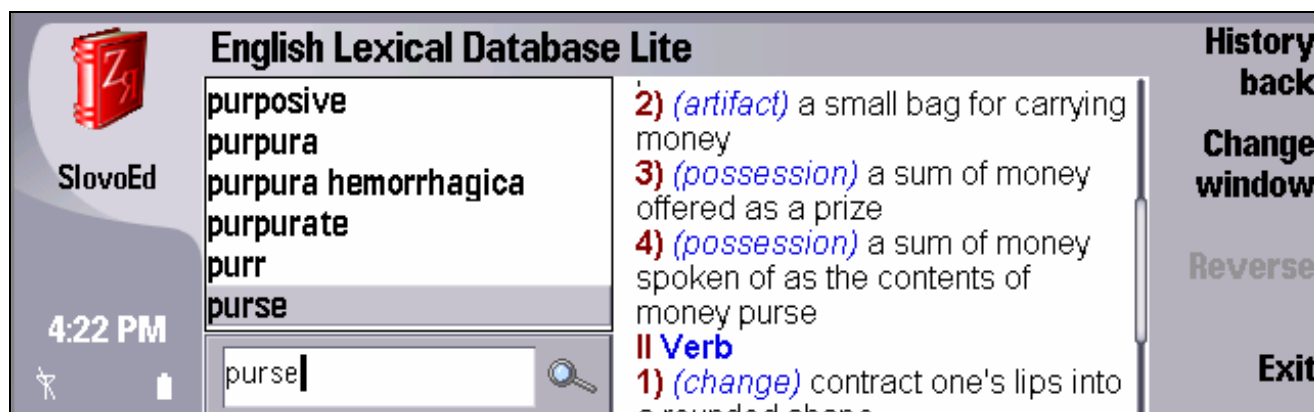


There are several ways of searching a word:

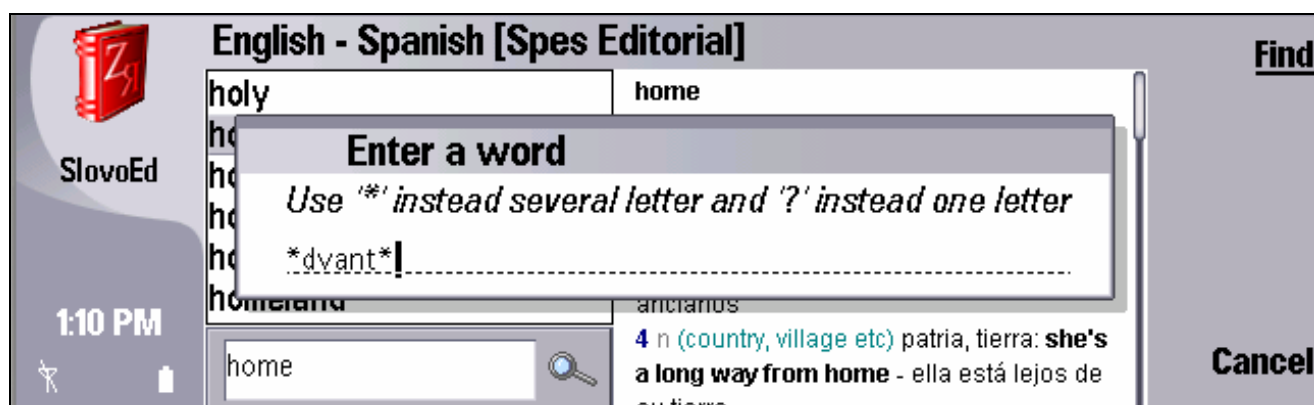
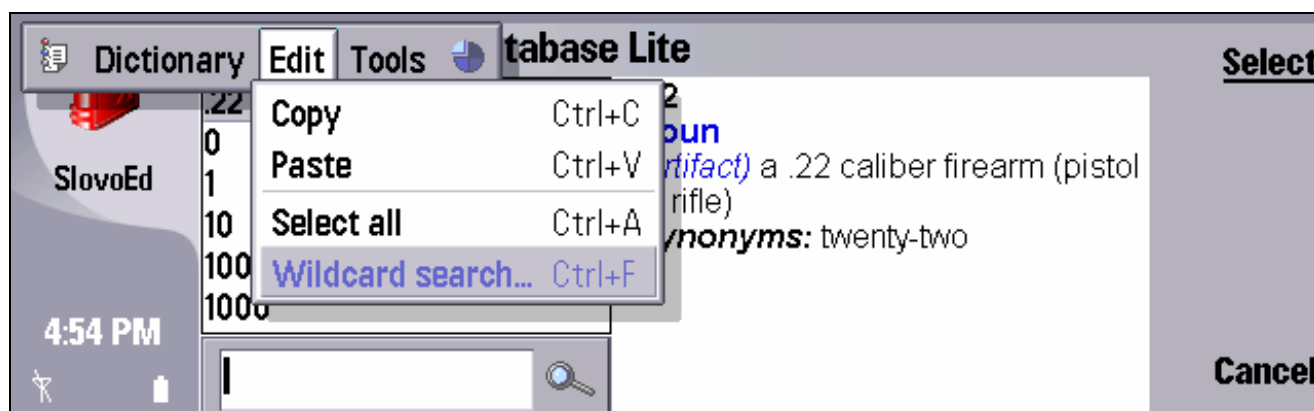
- You can look through the words, which are present in the dictionary databases by pressing the arrows Up/Down on the hardware keyboard; also you can type a word to be found in the edit field or paste it from the Clipboard:

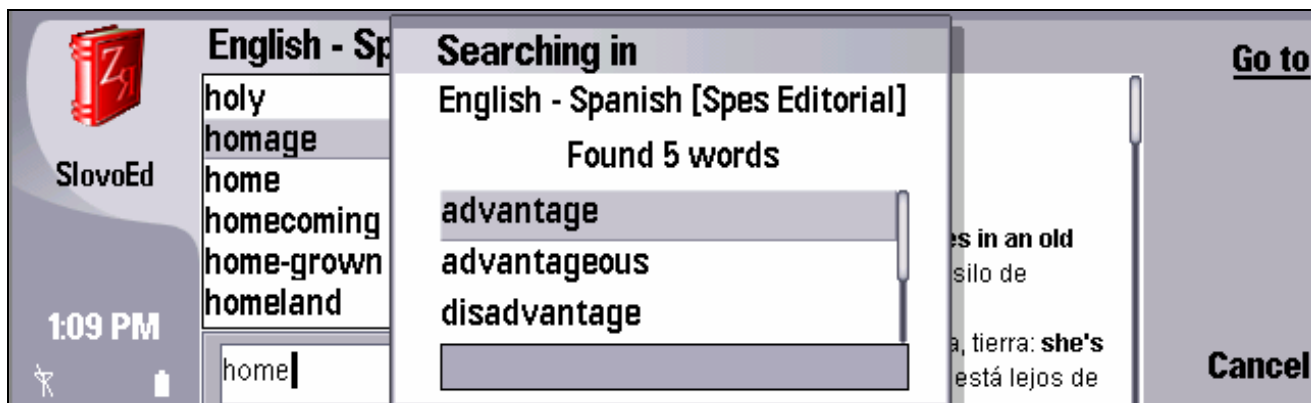


To get the translation of the entered word, press the hardware button **Enter**. If the entered word is in the dictionary database, its translation will appear in the translation field:



- You can also get the translation of every word (or of a part of the word) from the translation field. To do this, change window to the translation field and draw a frame on any word and press the Enter. The dictionary will immediately switch to the pair dictionary and start searching and if the found word is in the databases, you will receive its translation;
- In the dictionary there is also the function **Wildcard search (Menu/Edit/Wildcard search)**, which allows you to search for doubtful words using a mask. Question-mark (?) could be used instead of a single character and asterisk (*) instead of any character or group of characters:





Hotkeys for quick manipulation with the dictionary

There are some hotkeys to act quickly in the dictionary:

Tab	Change the active window
Ctrl + H	Open history
Ctrl + D	Choose dictionary
Ctrl + R	Reverse dictionary
Ctrl + I	Open “About” dialog
Ctrl + C	Copy text into Clipboard
Ctrl + A	Select all text
Ctrl + P	Open preferences
Ctrl + F	Set search after former
Ctrl + E	Close “SlovoEd”
Enter	Translate word

Customer support service

Now Support Knowledge Base is available for our customers! There you can find detailed answers for frequently asked questions about all programs by **Epocware / Paragon Software Group**.

Welcome to <http://support.epocware.com>

Phone support lines work weekdays from 11.30 a.m. till 7.00 p.m. of Moscow time *

Tel: +7 (095) 789-67-17

Web: <http://www.epocware.com>

How to get the serial number for “SlovoEd” dictionary

We invite you to our web-site <http://www.epocware.com> devoted to dictionaries for Nokia 9500 Communicator and other smartphones based on Symbian OS. There you can find demo-versions and detailed information about more than 150 different dictionaries available.

On the selected dictionary page at <http://www.epocware.com> you can get the serial number using secure on-line ordering with your credit card via the eShop. Your credit card information is used for the purpose of placing your order only and is proceeded through specialized American and European e-commerce systems. It is neither accessible to us nor to any other third party.

This way of payment provides the "real-time fulfillment", that means that you will be emailed your serial number immediately.

Dear customers!
Your reports and comments are much appreciated.
They help us to improve our programs quality.
Thank you in advance for your reports!

* **When calling from outside Russia, please consider time shifts:** Moscow is 11 hours ahead of San-Jose, 8 hours ahead of New York, 3 hours ahead of London, 2 hours ahead of Munich and Paris, 6 hours behind Tokyo. Moscow office operation hours are from 11.30 a.m. till 7.00 p.m. by Moscow local time.