



Copyright © 2002-2005 Epocware / Paragon Software Group  
Dolgoprudny, Moscow region, Russia

## ***Multi-Language Dictionary “SlovoEd” for Nokia 7710***

*Dear customer!*  
*Thank you for using “SlovoEd” dictionaries by*  
*Epocware / Paragon Software Group!*

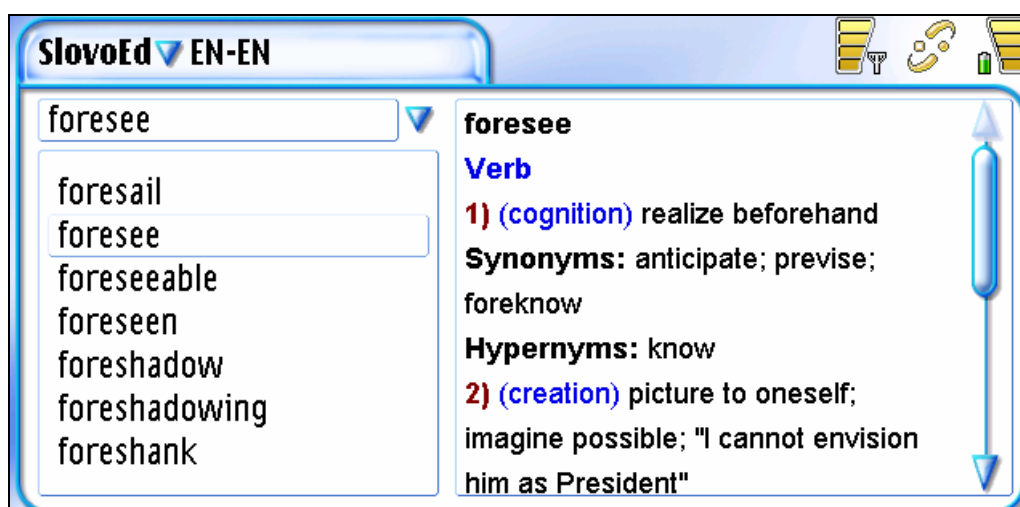
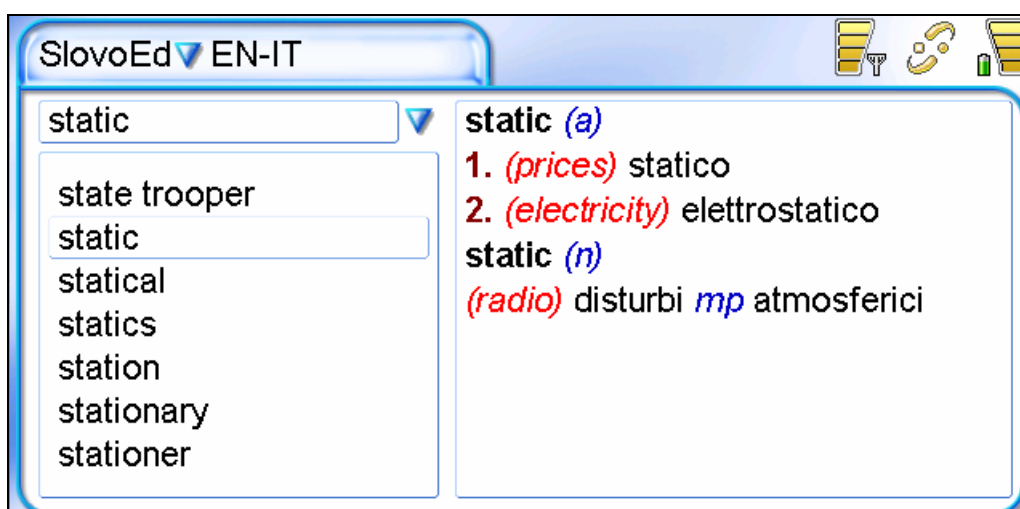
<b>ABOUT THE PROGRAM.....</b>	<b>2</b>
<b>DEMO VERSION LIMITATIONS AND REGISTRATION.....</b>	<b>3</b>
<b>PROGRAM INSTALLATION.....</b>	<b>4</b>
INSTALLATION FROM THE DEVICE.....	4
INSTALLATION FROM YOUR DESKTOP COMPUTER .....	4
SEVERAL DICTIONARIES INSTALLATION .....	5
<b>USING “SLOVOED” .....</b>	<b>5</b>
ELEMENTS OF THE DICTIONARY INTERFACE .....	5
DICTIONARY MENU .....	6
The Dictionary section.....	6
The Edit section .....	9
The Tools section.....	10
SEARCH OF WORDS IN THE DICTIONARY .....	11
<b>CUSTOMER SUPPORT SERVICE .....</b>	<b>13</b>
<b>HOW TO GET THE REGISTRATION CODE FOR THE “SLOVOED” DICTIONARY .....</b>	<b>13</b>

## About the Program

“SlovoEd” is a well-known set of products of **Epocware/Paragon Software Group** (<http://www.epocware.com>) for the following mobile operating systems: Palm OS, Pocket PC/Windows Mobile, Windows CE Smartphone and Symbian OS. The “SlovoEd” application for each operating system consists of two components: a software engine and a dictionary data base. High data compression ratio for dictionaries with a high access rate is available due to the special technology developed by **Epocware / Paragon Software Group**. Work with the word data bases becomes user friendly as much as possible owing to the easy user interface and complete tools of the dictionary engine.

Within the series of the “SlovoEd” dictionaries for Symbian OS devices we are glad to offer you the multi-language dictionary for Nokia 7710. The features of the program include:

- Simple and easy-to-use interface.
- Quality dictionary databases.
- A large number of word entries.
- Low memory consumption.
- Color formatting of word entries.



- Search history (last words that you searched), you can see any word from the history again at any time.

- Wildcard search.
- The possibility to install several language pairs.
- The possibility to select one of six interface languages.

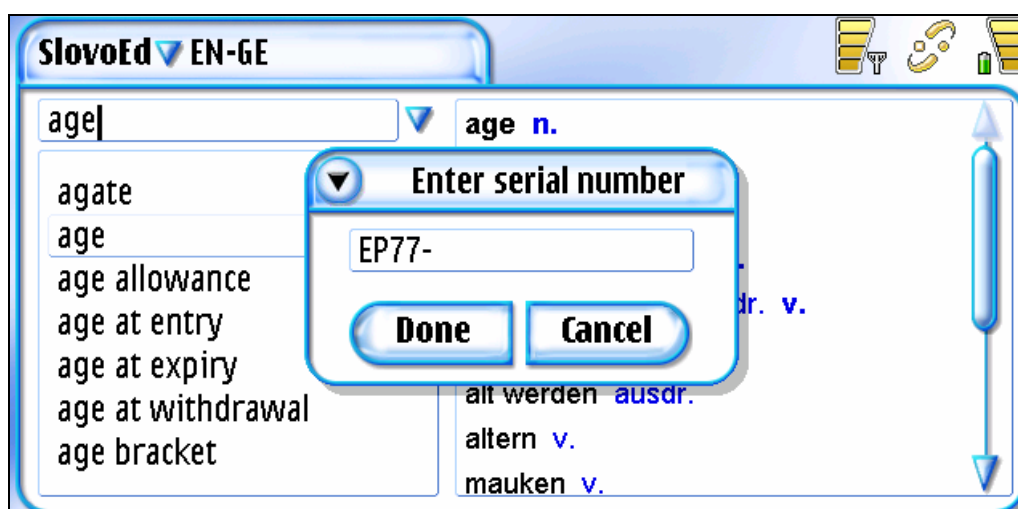
Some language versions of the “**SlovoEd**” dictionary are available in several editions: **compact**, **extended**, **unilateral** and other. You can choose any in accordance with your needs and device memory limitations.

You can choose any of six “**SlovoEd**” interface languages: English, German, French, Italian, Spanish and Russian.

The full list of the dictionaries databases is available at <http://www.epocware.com>.

### **Demo version limitations and registration**

The more you use an unregistered dictionary, the more you see a message about its registration procedure. To register your copy of the dictionary, enter your registration code in the dialog box **Menu/Dictionary/Register**:



You receive the registration code for your dictionary after purchasing the software (the detailed info about how to obtain your registration code is available in the corresponding section: [How to get the registration code for the “SlovoEd” dictionary](#)).

## Program installation

### *Note!*

- *Do not forget to perform backup of all your data before installation of new programs (including “SlovoEd”)! It will help you to avoid casual data loss.*
- *In order to choose “SlovoEd” interface language during the installation, set the option “default installation language” (**Tools/Control panel/Application manager/Options/Default installation language**) to a meaning, different from English.*

There are two ways of the dictionary installation - from your desktop computer using the PC Suite software and directly from your device:

### Installation from the device

To install a dictionary from your mobile device you should do following:

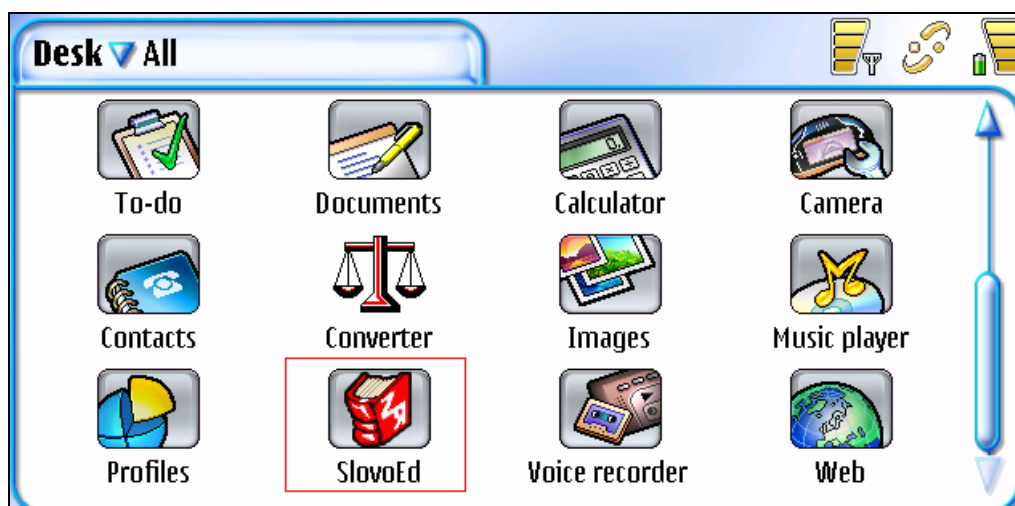
- Copy the installation \*.sis file from the desktop computer to any folder of your mobile device;
- Start the installation \*.sis file on your device;
- Follow the instructions of the installation program.

### Installation from your desktop computer

To install a dictionary from your desktop computer you should do following:

- Connect your Nokia device with the desktop computer using the PC Suite program;
- Start the installation \*.sis file on your desktop computer;
- Follow the instructions of the installation program.

After the installation is finished, the “SlovoEd” icon will appear in the Applications list:



## Several dictionaries installation

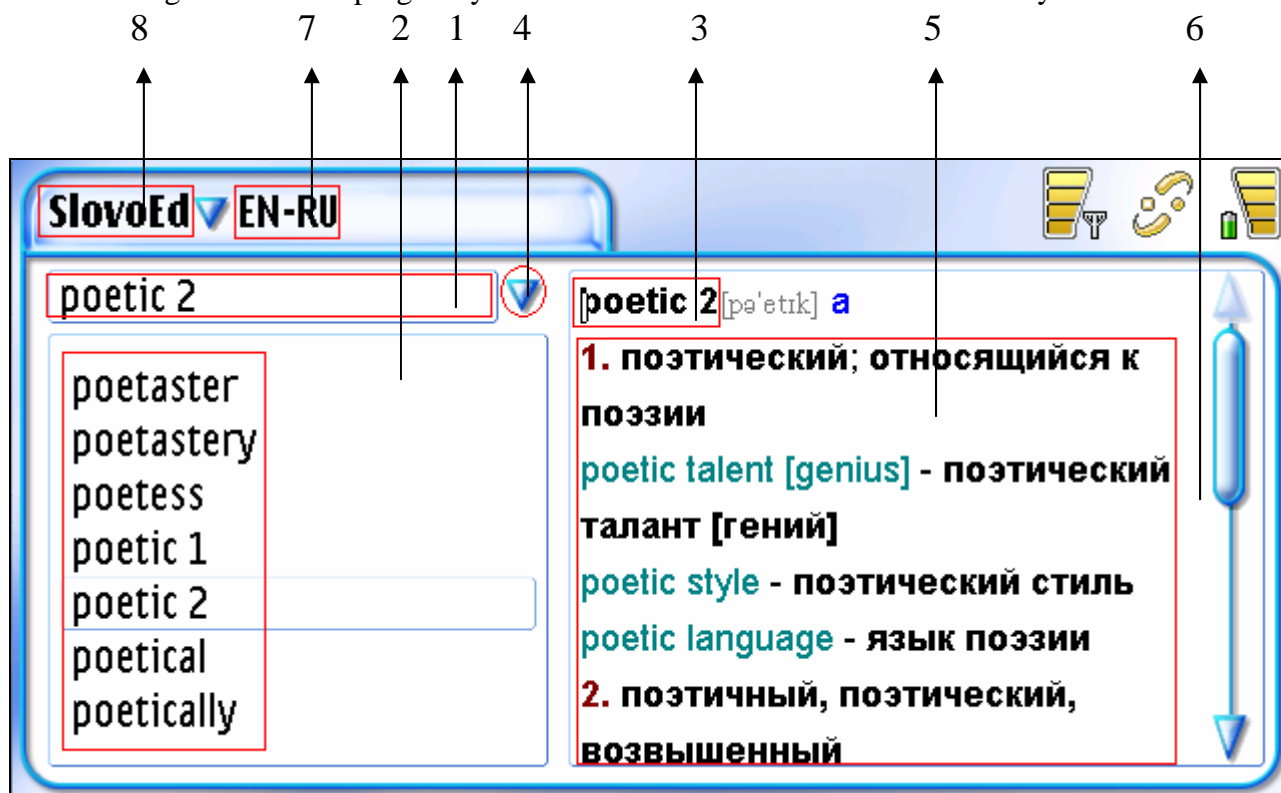
You have the possibility to install the “SlovoEd” program with several dictionaries simultaneously. To do that you should start the installation files of every dictionary one after another and install them.

Thus you will be able to use several dictionaries simultaneously and change the dictionaries through the menu item **Dictionary/Choose dictionary...**

## Using “SlovoEd”

### Elements of the dictionary interface

After starting the SlovoEd program you will see the main screen of the dictionary:



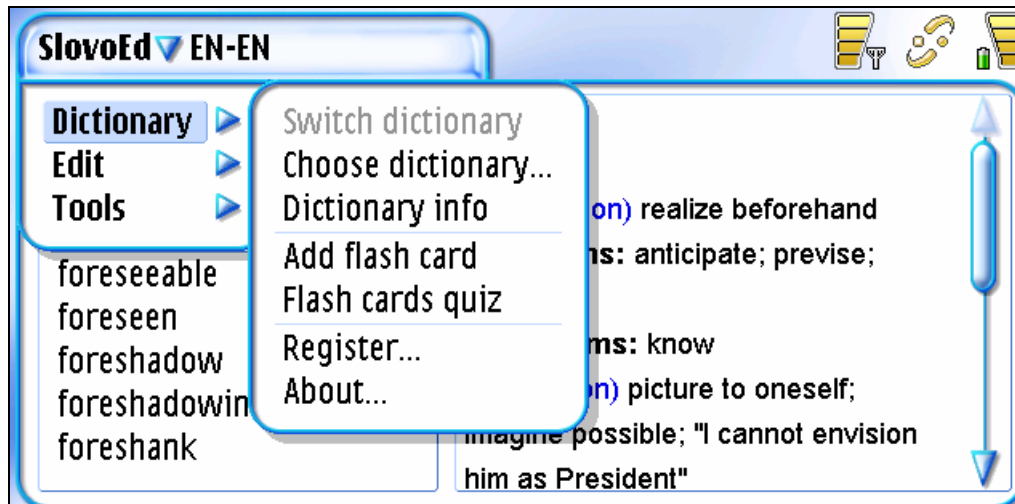
In this window there are the following elements:

1. Entry field;
2. List of words available in the dictionary;
3. Found word;
4. The **History** button for quick return to the last 15 word entries that you looked up earlier;
5. Translation of the word entry. All the meanings of the translation are numbered and may contain some extra information;
6. Translation field;
7. The active dictionary title;
8. The program title.

## Dictionary menu

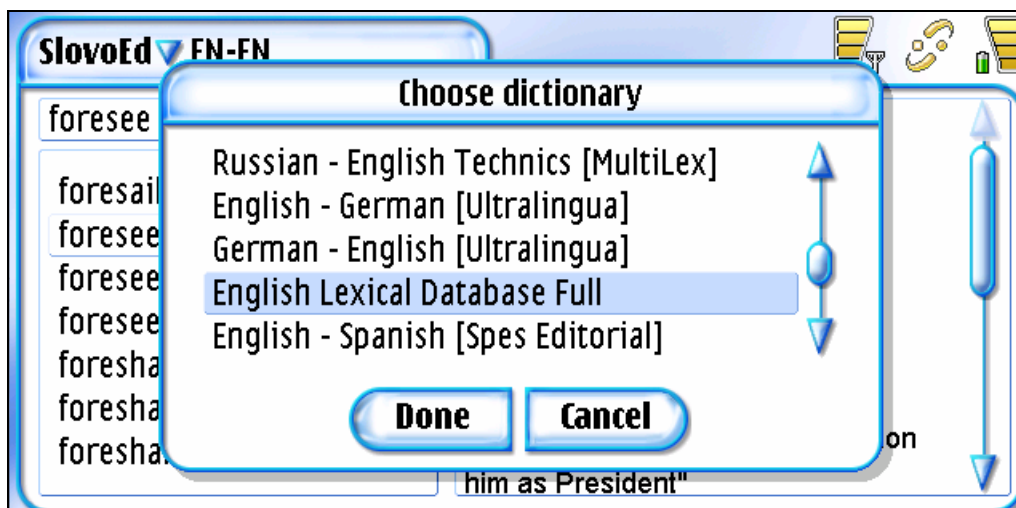
In order to open the dictionary menu you should tap on the top of the screen or press the “Menu” hardware button.

There are three sections in the “SlovoEd” menu: **Dictionary**, **Edit**, **Tools**:



The Dictionary section includes the following items:

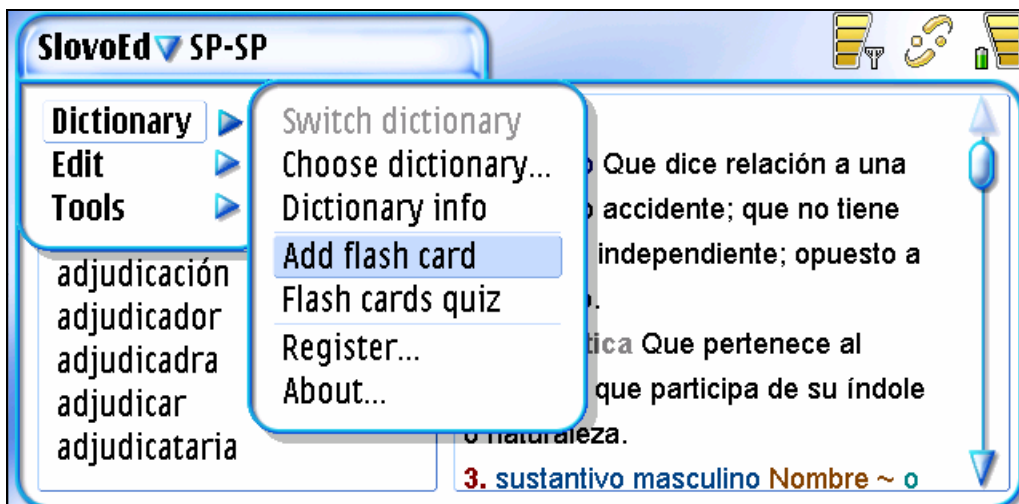
- The menu item **Switch dictionary** allows you to switch the dictionary to the pair dictionary;
- The menu item **Choose dictionary** allows you to select one of the installed dictionaries:



- The menu item **Dictionary info** allows you to get the information about the active dictionary:

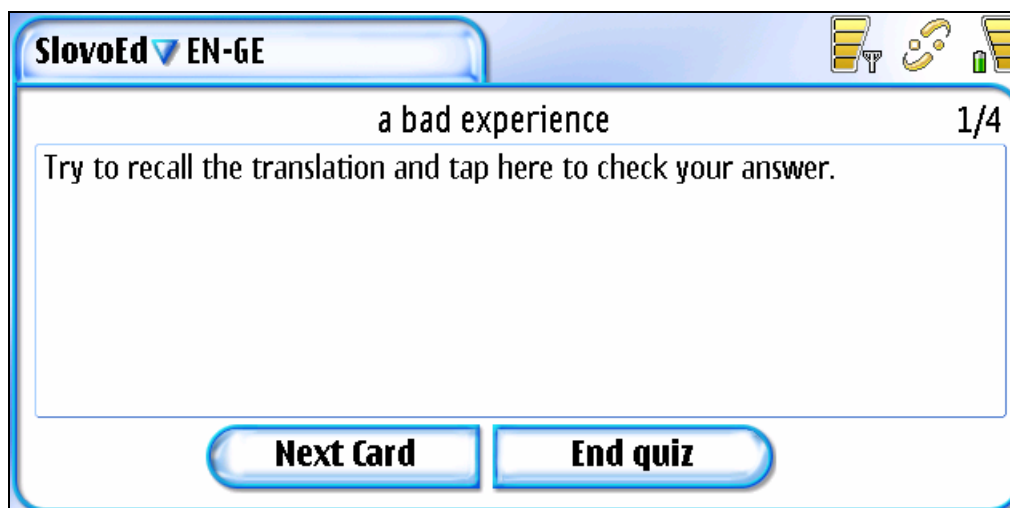


- The menu item **Add Flash Card** allows you to add new words to Flash Cards, which is a convenient and quick way of learning new words. If you are looking at the translation of the word and you want to learn it, just do the following: open the menu and choose the menu item **Add Flash Card**:



Add other words you want to learn to Flash Cards in the same way. If you have already added several new words to Flash Cards, you can try to pass a quiz on these new words.

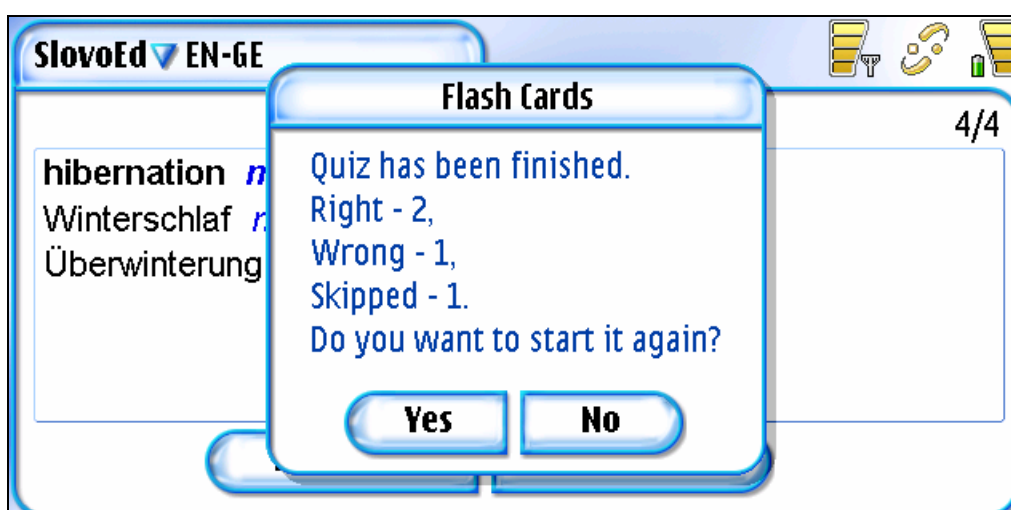
- The menu item **Flash Cards Quiz** allows you to pass a quiz. The words added to Flash Cards will be shown to you one by one:



You should recall the translation of the word and tap the screen to see the correct translation of the word. In opened window there are two buttons: **Right** and **Wrong**. Tap one of these buttons so that the program could save the result.

To skip the card, press the **Next Card** button, to finish the test press the **End quiz** button.

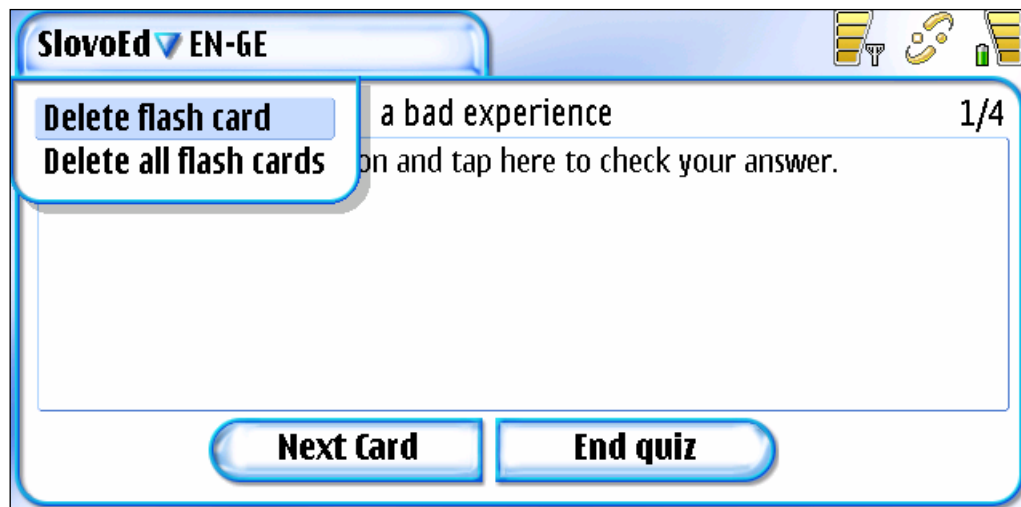
When you have finished quiz, you will see statistics: the number of the right and the wrong answers.



Later on start the test again. The more you give the right translation of the certain word, the less you will be asked to translate this word.

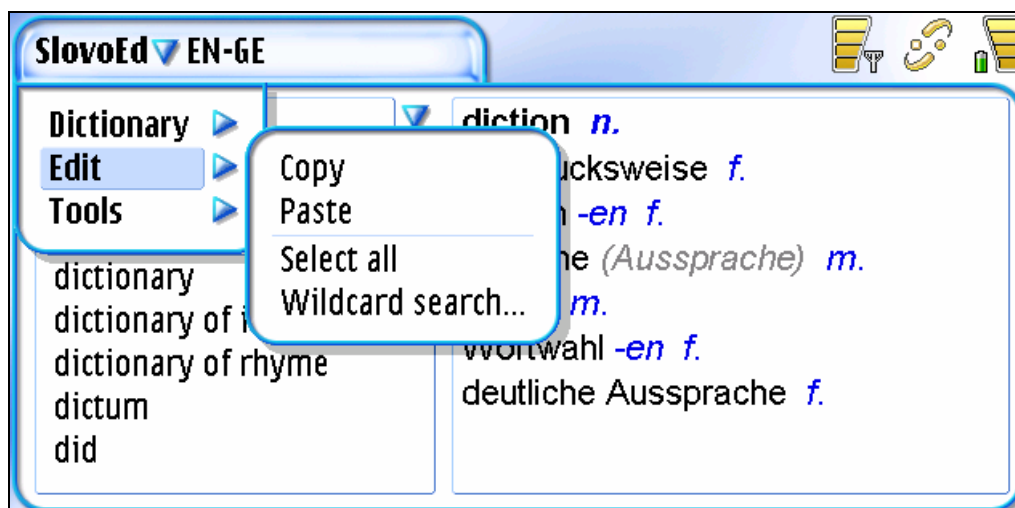


You can delete a Flash Card, which has bothered you, using the menu item **Delete Card**:

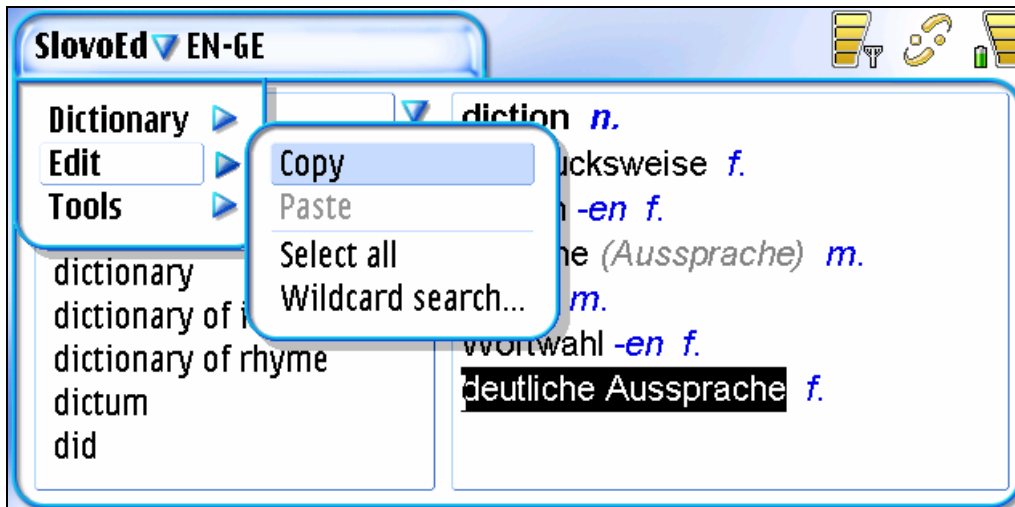


- The menu item **Register** allows registering the current dictionary. More detailed information about dictionary registration is available in the section [Demo version limitations and registration](#);
- The menu item **About** allows you to get the information about the current dictionary version and the “SlovoEd” developers.

The Edit section contains the following items:

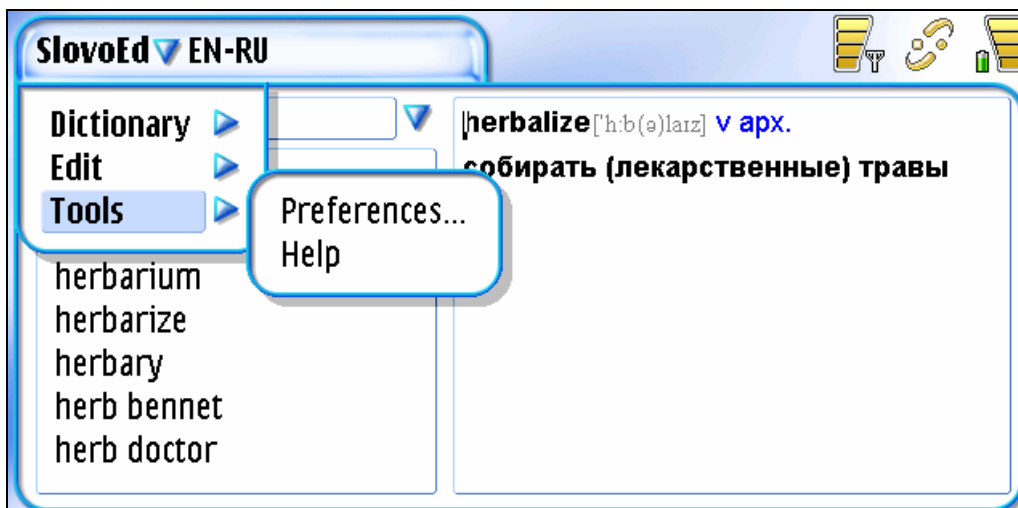


- The menu item **Copy** allows you to copy the text selected in the active window into Clipboard:



- The menu item **Paste** allows you to insert text from the clipboard into the edit field;
- The menu item **Select all** allows you to select the whole contents of the active window (for the following copying, for example);
- The menu item **Wildcard search** allows you to search for doubtful words using a mask. You can find the detailed information about this function in the section [Search of words in the dictionary](#).

The Tools section contains the following items:

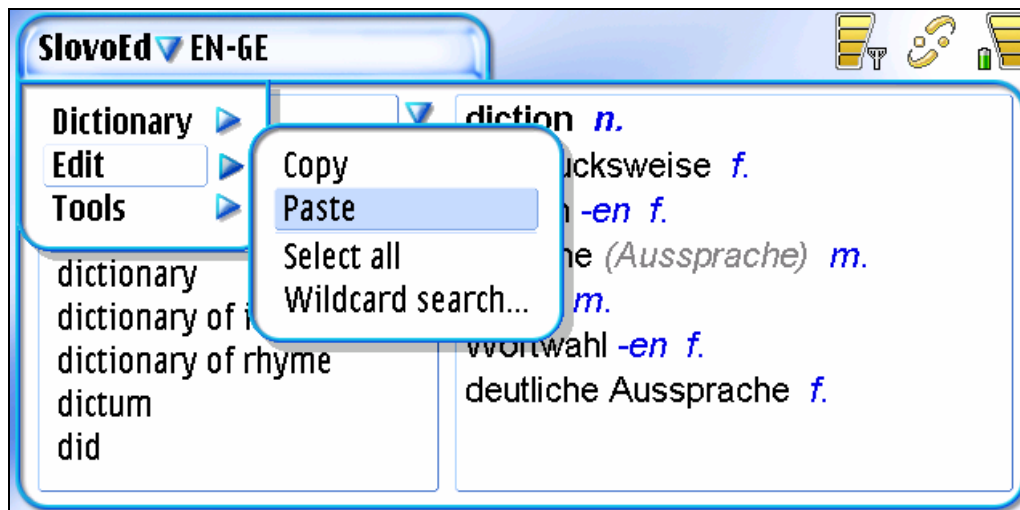


- The menu item **Preferences/Text size** allows you to change the text size in the translation field (also you can make use of the hardware “Zoom” button);
- The menu item **Help** allows you to get the brief user manual.

## Search of words in the dictionary

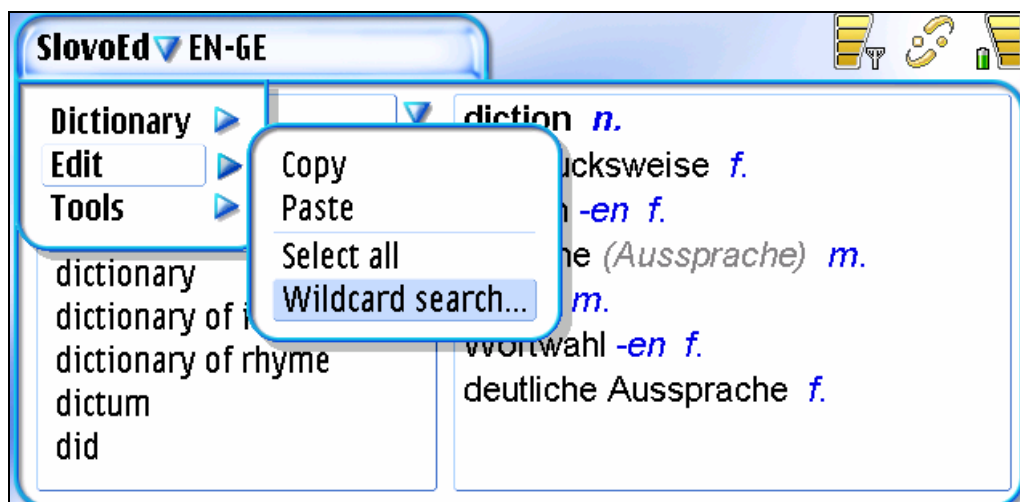
There are several ways of searching a word in the dictionary:

- You can look through the words, which are present in the dictionary databases by scrolling the list of words, also you can type a word to be found in the edit field or paste it from the Clipboard:



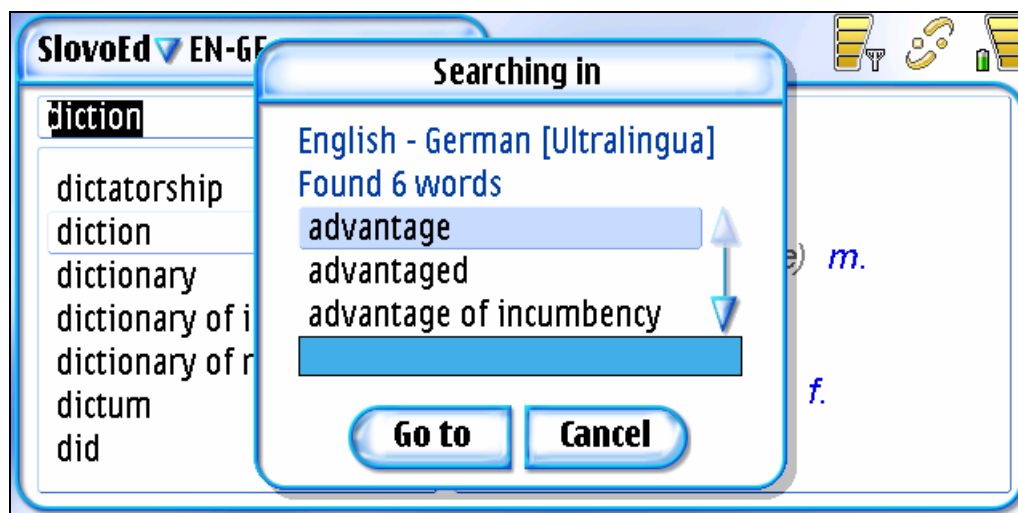
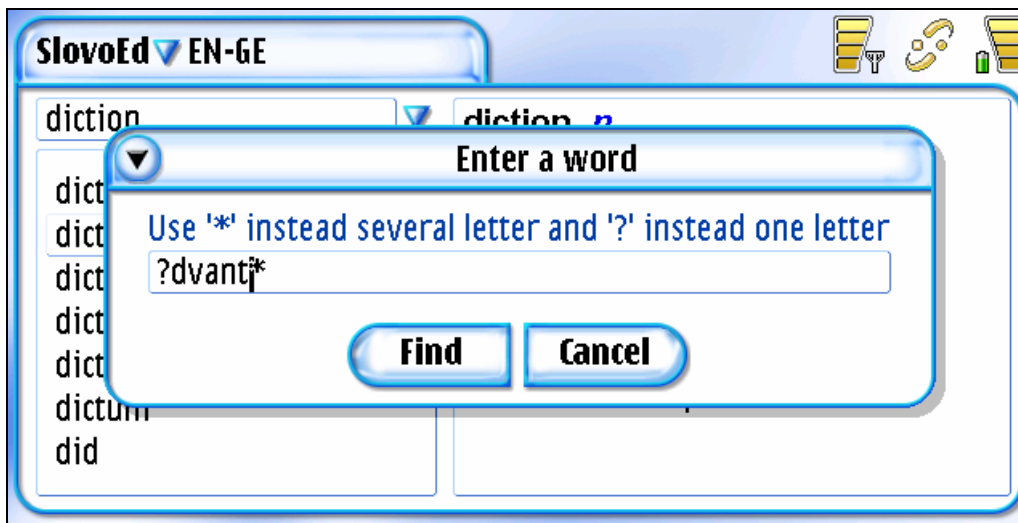
If the entered word is in the dictionary database, its translation will appear in the translation field.

- You can also get the translation of every word (or of a part of the word) from the translation field. To do this, press the word by stylus. The dictionary will immediately start searching and if the found word is in the databases, you will receive its translation;
- In the dictionary there is also the function **Wildcard search (Menu/Edit/Wildcard search)**, which allows you to search for doubtful words using a mask:



In the mask you should use the question-mark “?” instead of a single character and asterisk \* instead of any character or group of characters.

For example, the mask *?dvant\** allows you to find the words *advantage* and *advantageous*, but the word *disadvantage* will be skipped, because the part of the word *disa* contains more than 1 character.



In this case “?” is the letter “a” and “\*” is the groups of symbols *age* and *ageous* correspondingly.

And if you want to include the word *disadvantage* in the list of found words you should use the mask *\*dvant\**.

## Uninstallation

To completely uninstall the dictionary from your device you should do the following:

1. Open **Control panel** / **App. manager** from the main menu.
2. Choose the components for uninstalling.
3. Tap the **Remove** button.

## **Customer support service**

Now Support Knowledge Base is available for our customers! There you can find detailed answers for frequently asked questions about all programs by **Epocware / Paragon Software Group**.

Welcome to <http://support.epocware.com>

Phone support lines work weekdays from 11.30 a.m. till 7.00 p.m. of Moscow time \*

Tel: +7 (095) 789-67-17

Web: <http://www.epocware.com>

## **How to get the registration code for the “SlovoEd” dictionary**

We invite you to our web-site <http://www.epocware.com> devoted to dictionaries for Nokia 7710 and other smartphones based on Symbian OS. There you can find demo-versions and detailed information about more than 150 different dictionaries available.

On the selected dictionary page at <http://www.epocware.com> you can get the registration code using secure on-line ordering with your credit card via the eShop. Your credit card information is used for the purpose of placing your order only and is proceeded through specialized American and European e-commerce systems. It is neither accessible to us nor to any other third party. This way of payment provides the "real-time fulfillment", that means that you will be emailed your registration code immediately.

---

\* **When calling from outside Russia, please consider time shifts:** Moscow is 11 hours ahead of San-Jose, 8 hours ahead of New York, 3 hours ahead of London, 2 hours ahead of Munich and Paris, 6 hours behind Tokyo. Moscow office operation hours are from 11.30 a.m. till 7.00 p.m. by Moscow local time.