

# Handy Weather S60

Copyright © Epocware, Paragon Software Group

<http://www.epocware.com>

Handy Weather S60.....1

1. Installation .....2

2. Registering .....2

3. Day list.....2

4. Graph.....3

5. Details .....3

6. Current conditions .....3

7. Settings .....4

8. Screen saver .....4

9. Adding city.....4

10. Setting up connection.....5

11. Updating forecast .....5


---

## 1. Installation

---

Before you can install Handy Weather S60, you need to install PC Suite software. You can find it on the CD supplied together with the phone or download from the phone manufacturer web site.

To install Handy Weather from a PC:

1. Connect your phone to the PC via USB cable, Infrared or Bluetooth.
2. When connected, an icon is shown in the PC taskbar .
3. Start Nokia PC Suite by clicking this icon.
4. Choose **Install application**.
5. Select the SIS file to install.
6. The download begins. When download is completed, the installation starts.



You can also install application from other phone via built in **Send to friend** function of Handy Weather.

---

## 2. Registering

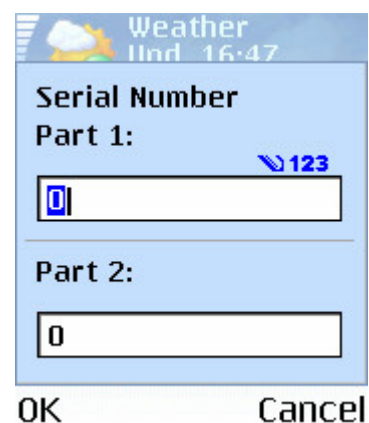
---

You can use Handy Weather during 14 days demo period. Then you will need to register.

You can register Handy Weather on-line at our web site [www.epocware.com](http://www.epocware.com).

After a purchase you will get your serial number by e-mail. Serial number consists of 2 groups of 8 digits, e.g. 12345678-12345678. To enter serial number, go to **Options > Register**.

After one year you will need to renew your weather service subscription at our web site and enter a new serial number.



---

## 3. Day list

---

Day list view shows a 5 day weather forecast for a given city. More cities can be added.

- To add a city, go to **Options > City > Add city**.
- To move between the cities, press the joystick right or left. Or press <1>-<9> for quick jump to a city by its number.
- To update a weather forecast, go to **Options > Update**, or press <#>.
- To see weather details for some day, scroll to the day and press the joystick.
- To choose preferred units (e.g. Celsius and Fahrenheit degrees) or setup automatic weather update, go to **Options > Settings**.
- To setup the default access point for downloading weather forecasts, go to **Options > Settings > Setup connection**.
- To enter a serial number, go to **Options > Register**.



## 4. Graph

Graph view shows a temperature graph for next 5 days for a given city. More cities can be added.

- To add a city, go to **Options > City > Add city**.
- To move between the cities, press the joystick right or left. Or press <1>-<9> for quick jump to a city by its number.
- To update a weather forecast, go to **Options > Update**, or press <#>.
- To see weather details for today, go to **Options > Details**, or press the joystick.
- To choose preferred units (e.g. Celsius and Fahrenheit degrees) or setup automatic weather update, go to **Options > Settings**.
- To setup the default access point for downloading weather forecasts, go to **Options > Settings > Setup connection**.
- To enter a serial number, go to **Options > Register**.



## 5. Details

Details view shows a detailed weather forecast for a given day:

- High and low day temperature
- Weather type icon and text
- Real feel (Rf) temperature (what temperature really feels like)
- Wind direction, speed and gust
- UV index (the sun's ultraviolet intensity level)
- Amount of precipitation

You can see weather details for next 5 days.

- To move between days, press the joystick right or left. Press <\*> to return to today.
- To update a weather forecast, go to **Options > Update**, or press <#>.
- To choose preferred units (e.g. Celsius and Fahrenheit degrees), go to **Options > Settings**.



## 6. Current conditions

Current conditions view shows weather conditions for the moment of update:

- Current temperature
- Weather type icon and text
- Wind direction, speed and gust
- Pressure
- Visibility

To renew the data, go to **Options > Update**, or press <#>.



---

## 7. Settings

---

To access Handy Weather settings, go to **Options > Settings**.

- **Setup connection** – To select default Internet access point for downloading weather forecasts.
- **Auto update** – To select automatic weather update mode. We recommend you using auto update to have weather forecast on your phone always up to date. Auto update generates very low Internet traffic. It is only about 2 KB per city.
- **Update interval** – To set automatic weather update interval for **Via interval** mode.
- **Update time** – To set automatic weather update time for **At preset time** mode.
- **Degrees** – To select unit for temperature.
- **Wind speed** – To select unit for wind speed.
- **Precipitations** – To select unit for precipitation amount.
- **Assistant** – To turn on/off the information dialogs.

---

## 8. Screen saver

---

Handy Weather contains Weather Screen Saver.

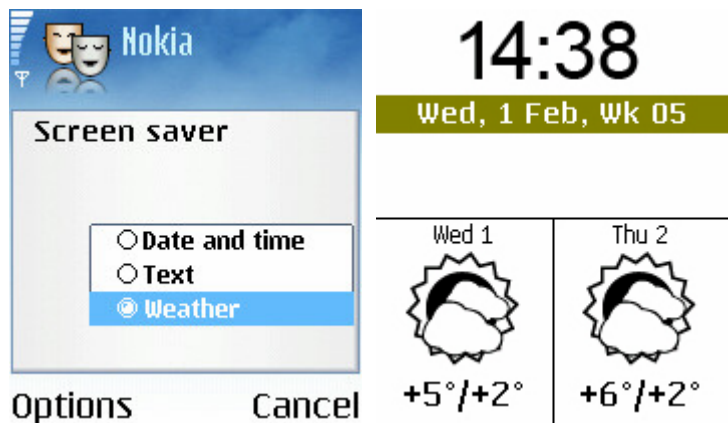
To activate it, go to **Menu > Themes**, scroll to your current theme and select **Options > Edit**, select **Screen Saver** and choose **Weather**.

Weather screen saver will replace the built-in screen saver and will show the following information:

- Time (big digits) and date
- Indicators – keypad lock, silent or offline profile, Bluetooth state, new messages and missed calls
- Time of the next due alarm
- Today and tomorrow weather forecast for your home (first) city

✎ You need to switch off/on your phone after Handy Weather installation. Otherwise screen saver might not work correctly.

☞ To change the home city, go to a desired city in day list or graph view, and select **Options > City > Set as home city**.



---

## 9. Adding city

---

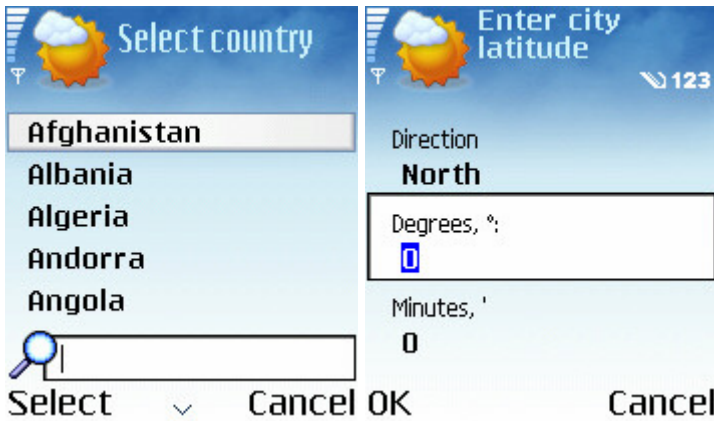
To add a city:

1. Go to **Options > City > Add city**.
2. Select a country from the list, and then select a city.

To add a city that is not in the list:

1. Go to **Options > City > Add custom city**.
2. Enter city name.
3. Enter city coordinates: latitude and longitude.

☞ You can find coordinates on any world city by searching for the city name together with words 'latitude' and 'longitude' at [www.google.com](http://www.google.com). For example: "Paris latitude longitude".



---

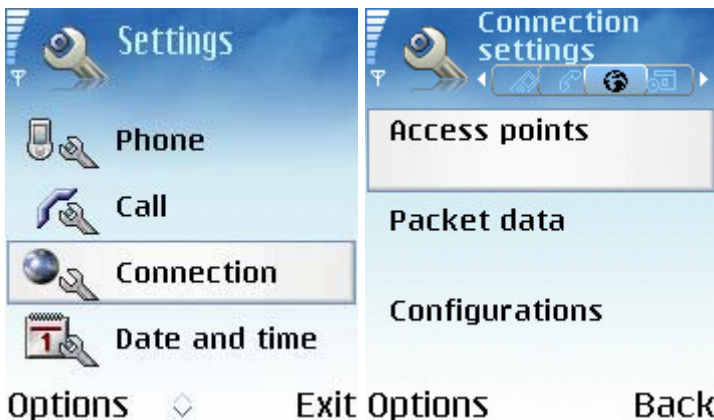
## 10. Setting up connection

---

To be able updating (downloading) weather forecasts from your phone:

1. Subscribe to **Internet** (GPRS/UMTS/EDGE) service (contact your operator).
2. Configure an Internet access point via **Menu > Settings > Connection > Access points** (usually this already done by default). Or request a special configuration SMS from your operator.
3. Select this Internet access point as default for downloading weather forecasts via **Options > Settings > Setup connection**.

☞ **GPRS-WAP** access point might not work for downloading weather data.



---

## 11. Updating forecast

---

To update a weather forecast, go to **Options > Update**, or press <#>.

☞ To update the weather forecast automatically via some interval or at preset time, go to **Options > Settings**, and select **Auto update**. Then set **Update interval** or **Update time**.

In case of problems, check that:

1. You have Internet (GPRS/UMTS/EDGE) service subscription on your phone (contact your operator).
2. You have Internet access point configured in **Menu > Settings > Connection > Access points** (contact your operator for correct settings).
3. This access point is selected as default in **Options > Settings > Setup connection**.
4. GPRS/UMTS/EDGE service is available at the moment (try to download any page in Web).
5. Switch off/on your phone and try again.

☞ Update might not work on some phones (e.g. Nokia 6600) by unknown reason. In this case only full phone reformatting or updating phone's firmware can help (refer to the phone's manual or contact service center). Backup all your data before these operations.